

# PHILIPS

Infuse medium  
ceiling lamp

Hue White and Colour  
Ambiance

Integrated LED

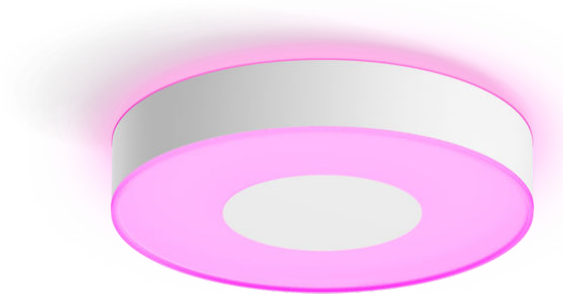
Bluetooth control via app

Control with app or voice\*

Add Hue Bridge to unlock more



41163/31/P9



## Easy smart lighting

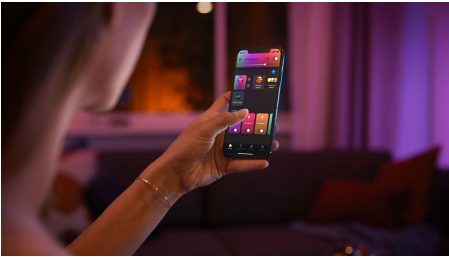
Make a statement in any room with the contemporary design of the medium Infuse ceiling light in white. Cast a subtle glow against the ceiling while shining powerful light downwards – in any shade of white or coloured light.

### Easy smart lighting

- Control up to 10 lights with the Bluetooth app
- Unlock the full suite of smart lighting features with the Bridge
- Set up hands-free voice control
- Create a personalised experience with colourful smart light
- Optimised light recipes for your daily activities

# Highlights

## Control up to 10 lights with the Bluetooth app



With the Hue Bluetooth app, you can control your Hue smart lights in a single room of your home. Add up to 10 smart lights and control them all with just the touch of a button on your mobile device.

## Unlock the full suite of smart lighting features with the Bridge



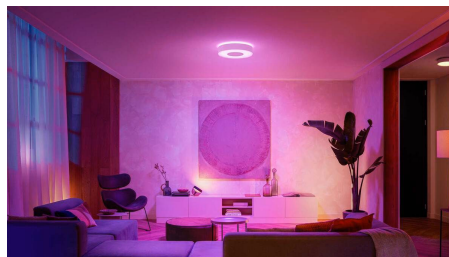
The Bridge unlocks the features that make smart lighting truly smart – away-from-home control, voice control, automated lighting and much more. Add a Bridge to your setup to create immersive experiences, tap into technology that's secure and reliable, and more. The Bridge is the key to smart lighting like you've never seen before.

## Set up hands-free voice control



Philips Hue works with Amazon Alexa and Google Assistant when paired with a compatible Google Nest or Amazon Echo device. Control multiple lights in a room or just a single lamp with simple voice commands.

## Create a personalised experience with colourful smart light



Use millions of colours of light to transform any room in your home, instantly creating a unique atmosphere. With the touch of a button, you can transform your living room with a pink glow or light your entire home in vibrant colours to turn any night at home into a personalised party.

## Optimised light recipes for your daily activities



Use the preset Philips Hue light recipes to fit your mood or activities throughout the day. Start your day with the bright white light of the Energise light recipe, or unwind with the subtle, soft light of Relax. Reading a book in the bath? Set the Read recipe for just the right light.

# Specifications

## Design and finishing

- Colour: White
- Material: Metal, Synthetic

## Extra feature/accessory incl.

- Dimmable with the Hue app and switches: Yes

**Miscellaneous**

- Especially designed for: Living Room and Bedroom
- Style: Modern
- Type: Ceiling Lights

**Product dimensions and weight**

- Height: 8.6 cm
- Length: 38.1 cm
- Width: 38.1 cm

**Service**

- Warranty: 2 year(s)

**Technical specifications**

- Lumen output at 4000K: 2,350 lm
- Lifetime up to: 25,000 h
- Bulb technology: LED, 24 V
- Light colour: 2000-6500 Hue White Colour Ambiance
- Mains power: 50-60 Hz
- LED: Yes
- Built-in LED: Yes
- Energy class included light source: G
- Number of bulbs: 1
- Wattage bulb included: 33.5 W
- IP code: IP20
- Class of protection: I - earthed
- Replaceability of light source: Replaceable LED light source by a professional
- Replaceability of control gears: Replaceable control gear by a professional
- Lumen output at 2700K: 2,100 lm

**What's supported**

- Compatible with Effects feature: Yes
- Philips Hue App: IOS 15 and above, Android 10.0 and above
- Defined support period: 5 years, except 3 years for Hue Bridge (see "End of Support Policy")

**Packaging dimensions and weight**

- EAN/UPC - product: 8718696176498
- Net weight: 3.14 kg
- Gross weight: 3.94 kg
- Height: 100 mm
- Length: 457 mm
- Width: 437 mm
- Material number (12NC): 915005997201



Issue date: 2024-04-30  
Version: 0.334

© 2024 Signify Holding. All rights reserved. Signify does not give any representation or warranty as to the accuracy or completeness of the information included herein and shall not be liable for any action in reliance thereon. The information presented in this document is not intended as any commercial offer and does not form part of any quotation or contract, unless otherwise agreed by Signify. Philips and the Philips Shield Emblem are registered trademarks of Koninklijke Philips N.V.

[www.lighting.philips.com](http://www.lighting.philips.com)