

LEGION 5i (15")

PURPOSE-BUILT FOR THE PLAYERS.

Geared for gaming, but designed with much more in mind, the Legion 5i is purpose-built to do everything. The thin and light chassis pairs portability and performance, with up to the latest 12th Generation Intel® Core™ processors and NVIDIA® GeForce RTX™ 3070 Ti (140W) graphics. Now with Gen 4 PCIe SSD storage and 4800 MHz DDR5 memory, boost your battery life and performance for all-day action at work, at home, or on the go. With an up-to 15.6" WQHD (2560 x 1440) resolution screen at a 165 Hz refresh rate with only 3 ms response time and Legion Coldfront 4.0 cooling technology, you'll be overclocking your game, not your noise. So get better, get balanced, and get gaming.

WHY YOU SHOULD BUY THE LENOVO LEGION 5i (15")



Desktop Caliber Gaming Happens with Intel®

Take a revolutionary leap into real-world hybrid performance with 12th Generation Intel® Core™ processors, WiFi 6E and DDR5 memory support.



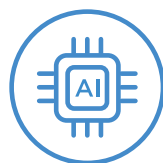
Full Powered RTX. It's On.

Experience the most realistic gaming experiences with NVIDIA® GeForce RTX™ 30 Series graphics delivering ray tracing and advanced DLSS to your favorite games.



Aim to Game in WQHD

Play with purpose on up-to a 15.6" WQHD (2560 x 1440) 165 Hz 3 ms screen, housed in an elegant aluminum and magnesium blended chassis that is 14% thinner than previous generation.



AI Enhanced Gaming

The Legion AI Engine leverages AI to custom calibrate your system for the most popular AAA titles, while Legion Coldfront 4.0 deploys advanced thermal technologies to deliver maximum frame rates in stealthy silence.



WWW.LENOVO.COM



Lenovo

LEGION 5i (15")

SPECIFICATIONS

Legion 5 15IAH7H*

PERFORMANCE

Processor

12th Generation Intel® Core™ i7-12700H
12th Generation Intel® Core™ i5-12500H

Operating System

Windows 11 Pro
Windows 11 Home

Graphics

NVIDIA® GeForce RTX™ 3070 Ti; 8 GB GDDR6
(140W TGP, Listed Boost Clock: 1485 MHz)¹
NVIDIA® GeForce RTX™ 3070; 8 GB GDDR6
(140W TGP, Listed Boost Clock: 1620 MHz)¹
NVIDIA® GeForce RTX™ 3060; 6 GB GDDR6
(130W TGP, Listed Boost Clock: 1702 MHz)¹

Memory

4800 MHz DDR5

8 GB (1 x 8 GB) / 16 GB (2 x 8 GB) / 32 GB (2 x 16 GB)

Storage

PCIe SSD (Gen 4)

512 GB / 1 TB

Battery²

60 WHr / 80 WHr
> 5 Hours (Target)³
Super Rapid Charge (30 min charge 80%)

Power Adapter

230W Slim Adapter⁴
300W Slim Adapter

DESIGN

Display

- 15" WQHD (2560 x 1440) IPS; 16:9
(165 Hz / 3 ms Response Time⁵ /
100% sRGB / 300 nits); Dolby Vision®
Support / NVIDIA® G-SYNC™ Support
- 15" FHD (1920 x 1080) IPS; 16:9
(165 Hz / 3 ms Response Time⁵ /
100% sRGB / 300 nits); Dolby Vision®
Support / NVIDIA® G-SYNC™ Support
- 15" FHD (1920 x 1200) IPS; 16:9
(144 Hz / 45% NTSC / 300 nits)
- 15" FHD (1920 x 1200) IPS; 16:9
(60 Hz / 100% sRGB / 300 nits)

Dimensions (W x D x H)

(mm) : 358.8 x 262.35 x 19.99
(inches) : 14.13" x 10.33" x 0.79"

Weight

< 2.4 kg (5.3 lbs) (Target)

Backlit Keyboard

1.5 mm / White Backlight (Storm Grey &
Cloud Grey) / 4-Zone RGB⁶ / 0.3 mm Ditch /
100% Anti-Ghosting / Swappable Keycap

Colors

Storm Grey
Cloud Grey

CONNECTIVITY

Webcam

Built-in HD Webcam (1080p) / (720p)⁶
with E-Shutter

WLAN

2x2 Intel® WiFi 6E (802.11 ax)
2x2 Intel® WiFi 6 (802.11 ax)⁶
2x2 Intel® WiFi 5 (802.11 ac)⁶

Bluetooth⁷

Starting from Bluetooth® 5.1

Audio

2 x 2W Stereo Speakers with Nahimic Audio

I/O (Input/Output) Ports

Left Side

1 x Thunderbolt™ 4 (USB 4, DisplayPort™ 1.4)
1 x USB Type-C™ (USB 3.2 Gen 2⁷,
DisplayPort™ 1.4)

Right Side

1 x USB Type-A 3.2 Gen 1⁷
1 x Audio Combo Jack
1 x E-Shutter Button

Rear

1 x USB Type-A (USB 3.2 Gen 1⁷ Always-On 5V)
1 x USB Type-A (USB 3.2 Gen 1⁷)
1 x USB Type-C™ (USB 3.2 Gen 2⁷,
DisplayPort™ 1.4, PD up to 135W)
1 x HDMI™ 2.1
1 x RJ45 Ethernet
1 x DC-In

¹ Supports NVIDIA® Max-Q Technologies: Advanced Optimus, Resizable BAR, Dynamic Boost 2.0.

² All battery life claims are approximate and based on results using the MobileMark® 2018 v1.0.2.46 battery life benchmark test. Actual battery life will vary and depends on many factors such as product configuration and usage, software use, wireless functionality, power management settings, and screen brightness. The maximum capacity of the battery will decrease with time and use. Testing by Lenovo.

³ Final battery life to be finalized Spring 2021 or Product SS 2021.

⁴ Tech ready.

⁵ With Overdrive (OD).

⁶ Optional.

⁷ The actual transfer speed of the USB 3.2 will vary and, depending on many factors, such as the processing capability of host and peripheral devices, file attributes and other factors related to system configuration and your operating environments, will be slower than a speed of 20 Gbit/s.

⁸ Except Japan, India and China.

PRELOADED SOFTWARE

- Lenovo Vantage
- Lenovo PC Manager
- Lenovo Nerve Center
- McAfee LiveSafe™
- Lenovo Antivirus
- Microsoft Office Trial⁸
- Power2Go

LENOVO SERVICES

Legion Ultimate Support*

Legion Ultimate Support is here to be your META - Most Effective Tactic Available. With one single point of contact, get 24/7 gamer-centric support from a team of IT experts who are gaming specialists and can help optimize your hardware & software settings to keep you productive all day and unbeatable at night.

Lenovo Smart Performance

Smart Performance Services within Lenovo Vantage will keep your system running at optimum performance and proactively fix issues that affect PC performance, internet performance, and security.

Lenovo Accidental Damage Protection

Avoid the hassles of unexpected damage & repair costs. With coverage for drops, spills, electric surges, and broken LCD screens, accidental damage protection makes it easy to repair to your PCs and ensures your device is up and running fast.

Lenovo Warranty Extensions (1-to-3 Years Duration)

Gain complete peace of mind by extending your warranty to minimize unexpected expenses and repair costs.

* Available in NA, CAP, IN, JP only. Not available in EMEA, ANZ, and LAS.

OPTIONS & ACCESSORIES



Lenovo Legion M300s RGB Gaming Mouse



Lenovo Legion H300 Stereo Gaming Headset



Lenovo Legion Active Gaming Backpack

McAfee® LiveSafe™

Register McAfee® to enjoy these benefits in your FREE 30-day trial.

- Award-winning Antivirus
- Multi-device Compatibility
- Password Manager
- Identity Theft Protection
- Safe Web Browsing
- Free Customer Support



WWW.LENOVO.COM

* Example of Lenovo catalogue naming convention



Lenovo reserves the right to alter product offerings and specifications at any time, without notice. Lenovo makes every effort to ensure accuracy of all information but is not liable or responsible for any editorial, photographic or typographic errors. All images are for illustration purposes only. For full Lenovo product, service and warranty specifications visit www.lenovo.com. Lenovo makes no representations or warranties regarding third party products or services. **Trademarks:** The following are trademarks or registered trademarks of Lenovo: Lenovo, the Lenovo logo, ideapad, IdeaCentre, yoga and yoga home. Microsoft, Windows and Vista are registered trademarks of Microsoft Corporation. Ultrabook, Celeron, Celeron Inside, Core Inside, Intel, Intel Logo, Intel Atom, Intel Atom Inside, Intel Core, Intel Inside, Intel vPro, Itanium, Itanium Inside, Pentium, Pentium Inside, vPro Inside, Xeon, Xeon Phi, and Xeon Inside are trademarks of Intel Corporation in the U.S. and/or other countries. Other company, product and service names may be trademarks or service marks of others. Visit www.lenovo.com/lenovo/us/en/safecompl/ periodically for the latest information on safe and effective computing. ©2022 Lenovo. All rights reserved.



Lenovo