



We love that you are rocking JLab!
We take pride in our products and fully stand behind them.



YOUR WARRANTY

All warranty claims are subject to JLab authorization and at our sole discretion. Retain your proof of purchase to ensure warranty coverage.



CONTACT US

Reach out to us at support@jlab.com or visit jlab.com/contact

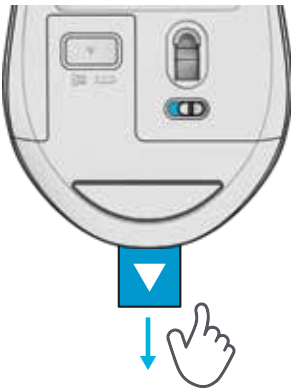
REGISTER TODAY

jlab.com/register

[Product updates](#) | [How-to tips](#)
[FAQs & more](#)

GO MOUSE

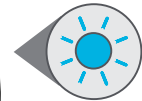
1 SETUP



3 CONNECTION



PAIRING MODE:
Flashing

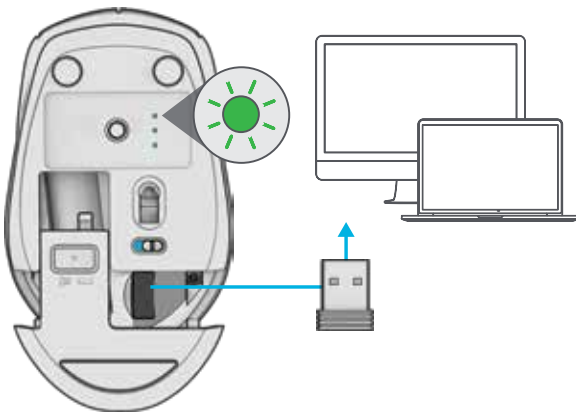


PAIRED:
Solid then off

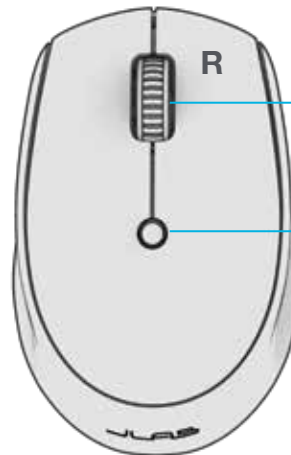
QUICK PRESS
to switch connection

PRESS AND HOLD
for Pairing Mode
(Search for GO Mouse in device settings to connect)

2 2.4 CONNECTION



INTERFACE



Scroll + Middle Button

DPI Button:
Toggle mouse sensitivity:
800/Low
1200/Medium
1600/High



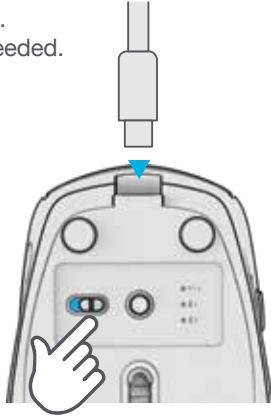
Have a JLab Go Keyboard?

Scan the QR code to learn how to pair both your devices with just one dongle.

GO CHARGE MOUSE

1 SETUP

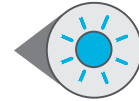
Switch GO Charge ON.
Plug in if charging is needed.



3 CONNECTION



PAIRING MODE:
Flashing

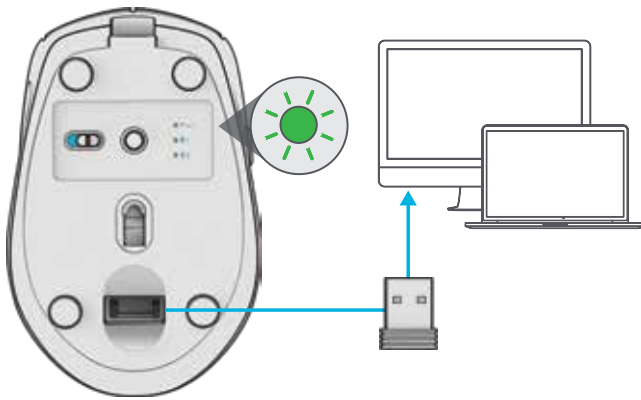


PAIRED:
Solid then off

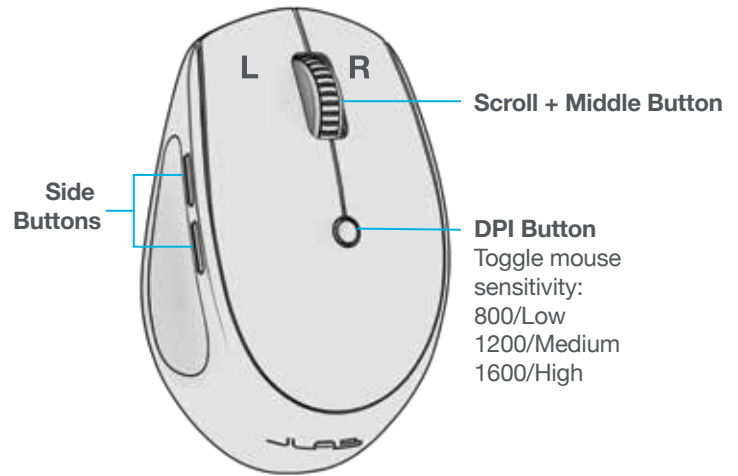
QUICK PRESS
to switch connection

PRESS AND HOLD
for Pairing Mode
(Search for GO Charge in
device settings to connect)

2 2.4 CONNECTION



INTERFACE



Have a JLab Go Keyboard?
Scan the QR code to learn how
to pair both your devices with
just one dongle.



[Shop products](#) | [Product alerts](#) | [Burn-in your headphones](#)

JLab Store + Burn-in Tool

