



Antec  
**NX500M**  
Mini Tower M-ATX Gaming Case



## UNIQUE DESIGN & POWERFUL HEAT DISSIPATION

The NX500M features a unique design and excellent cooling performance. The half-view tempered glass side panel design allows you to show off your gaming configurations without any obstacles. 6 x 120mm fans can be installed simultaneously.



## SLEEK DESIGN WITH MASSIVE AIR INTAKE

The sleek and elegant exterior design provides ample airflow to your system for maximum cooling while ensuring minimal dust intake. The panel comes equipped with a Type-C port for added convenience in use.



## POWERFUL COOLING

Supports a 360mm (Length  $\leq$  397mm) Radiator at the front and a 240mm radiator at the top.



## POWERFUL FAN COMPATIBILITY

Supports 3 x 120mm fans at the front.



## HIGH-AIRFLOW MESH FRONT PANEL

Massive air intake at the front provides ample airflow.



REAR

1 x 120 mm Regular Fan



## PRE-INSTALLED 1 X 120MM FAN



## I/O PANEL

Power, Reset, Type-C 3.2 Gen 2 x 1, USB3.0 x 1, USB2.0 x 2, MIC/HD-AUDIO



Type-C 3.2 Gen 2



## TEMPERED GLASS SIDE PANEL

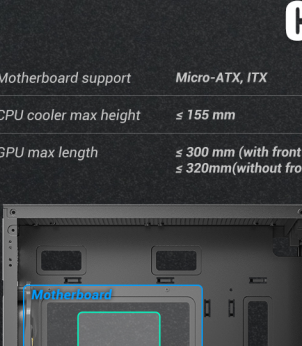
Showcase your personalized hardware and custom water-cooling system.



## UP TO 6 X 120MM FANS SIMULTANEOUSLY



2 x 120mm / 2 x 140mm

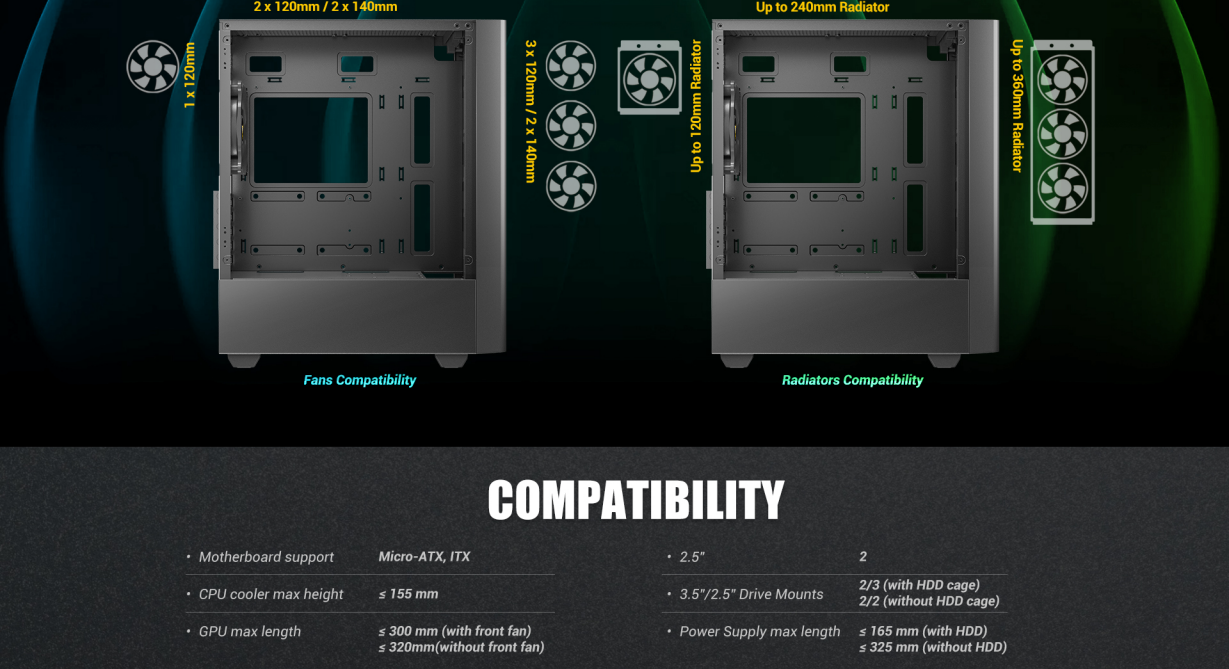


Fans Compatibility

Up to 240mm Radiator



Radiators Compatibility



## COMPATIBILITY

• Motherboard support Micro-ATX, ITX

• CPU cooler max height  $\leq$  155 mm

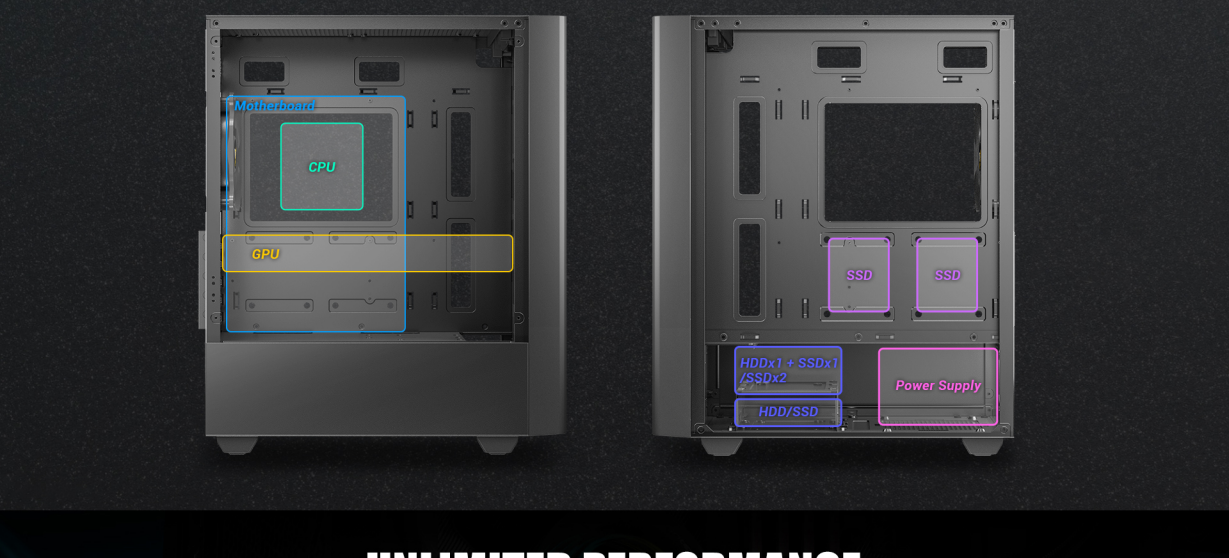
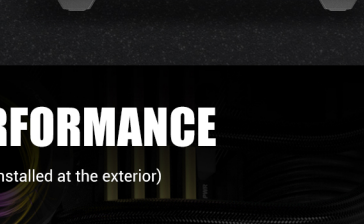
• GPU max length  $\leq$  300 mm (with front fan)  $\leq$  320mm (without front fan)

• GPU max length  $\leq$  300 mm (with front fan)  $\leq$  320mm (without front fan)

• 2.5" 2

• 3.5"/2.5" Drive Mounts 2/3 (with HDD cage) 2/2 (without HDD cage)

• Power Supply max length  $\leq$  165 mm (with HDD)  $\leq$  325 mm (without HDD)



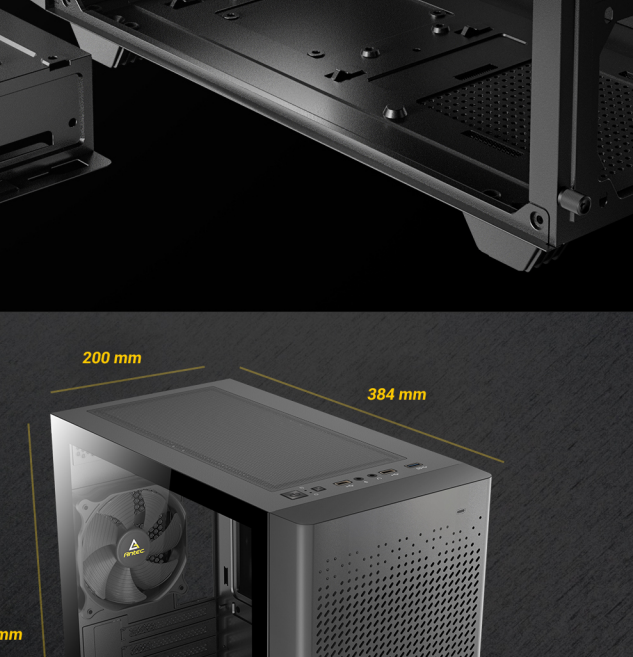
## UNLIMITED PERFORMANCE

Max. GPU Length : 320 mm (Fans are installed at the exterior)



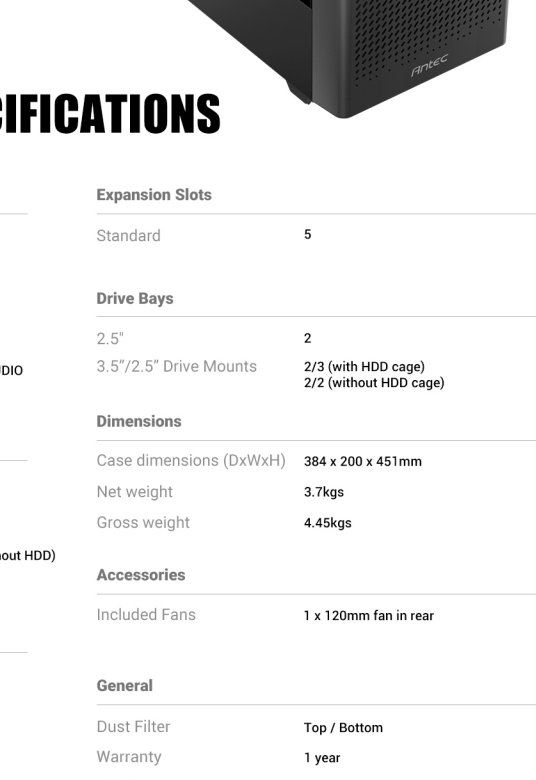
## REMOVABLE HDD DRIVE CAGE

The HDD drive cage is removable to increase PSU installation space. With the drive cage installed, the PSU compartment can accommodate PSUs up to 165mm in length. With the drive cage removed, the PSU compartment can accommodate PSUs up to 325mm in length.



## DIMENSIONS

384 x 200 x 451 mm (DWH)



## SPECIFICATIONS

Main Spec		Expansion Slots	
Motherboard Support	Micro-ATX, ITX	Standard	5
Form Factor	Mini Tower		
Case Material	Steel + Plastic		
Side Window Material	Tempered Glass		
I/O Ports	Power, Reset, Type-C 3.2 Gen 2 x 1, USB3.0 x 1, USB2.0 x 2, MIC/HD-AUDIO		
Compatibility & Clearances		Dimensions	
CPU Cooler Max Height	$\leq$ 155mm	Case dimensions (DxWxH)	384 x 200 x 451mm
GPU Max Length	$\leq$ 300mm (with front fan) $\leq$ 320mm (without front fan)	Net weight	3.7kgs
Power Supply Max Length	$\leq$ 165mm (with HDD) / $\leq$ 325mm (without HDD)	Gross weight	4.45kgs
Cable Routing Space	$\leq$ 20mm		
Fan Support		Accessories	
Front	3 x 120mm / 2 x 140mm	Included Fans	1 x 120mm fan in rear
Top	2 x 120mm / 2 x 140mm		
Rear	1 x 120mm		
Radiator Support		General	
Front	120 / 140 / 240 / 280 / 360 (Lengths: 397mm)mm	Dust Filter	Top / Bottom
Top	120 / 240mm	Warranty	1 year
Rear	Up to 120mm	UPC#	0-761345-81056-2

