

# PHILIPS

T-connector for  
LowVolt

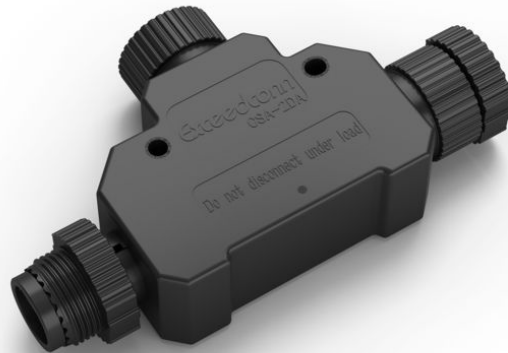
Hue

T-connector

LowVolt-compatible

Made for outdoor use (IP67)

17369/30/PN



## Easy smart lighting

Easily customise your outdoor smart lighting! The T-connector offers even more flexibility in joining LowVolt outdoor lights together, letting you add space between lights or extend your set-up throughout your garden.

### **Specially designed for your outdoor spaces**

- Easy to install and extend

# Highlights

## Easy to install and extend



Brighten up dark paths, create highlights in your landscaping or create a unique ambience on the patio – anything is possible with the LowVolt system. The products, which can be plugged into any outdoor electrical socket, are safe to use and easy to install. Eliminate the hassle of adding outdoor lighting with a Philips

Hue LowVolt outdoor smart lighting system.

# Specifications

## Design and finishing

- Colour: Black
- Material: Synthetic

## Extra feature/accessory incl.

- Fully weatherproof: Yes

## Garden area

- Garden area: Back garden, Front garden

## Miscellaneous

- Especially designed for: Garden and Patio
- Type: Accessories

## Product dimensions and weight

- Height: 1.9 cm
- Length: 8.5 cm
- Width: 4.7 cm

## Service

- Warranty: 2 year(s)

## Technical specifications

- Lifetime up to: 25,000 h
- Mains power: 24 V DC
- IP code: IP67, dust tight, protection against temporary immersion
- Class of protection: III — safe extra low voltage

## What's supported

- Philips Hue App: IOS 15 and above, Android 10.0 and above
- Defined support period: 5 years, except 3 years for Hue Bridge (see “End of Support Policy”)

## Packaging dimensions and weight

- EAN/UPC - product: 8718696176658
- Net weight: 0.05 kg
- Gross weight: 0.12 kg
- Height: 48 mm
- Length: 112 mm
- Width: 74 mm
- Material number (12NC): 915006001801



Issue date: 2024-05-09  
Version: 0.500

© 2024 Signify Holding. All rights reserved. Signify does not give any representation or warranty as to the accuracy or completeness of the information included herein and shall not be liable for any action in reliance thereon. The information presented in this document is not intended as any commercial offer and does not form part of any quotation or contract, unless otherwise agreed by Signify. Philips and the Philips Shield Emblem are registered trademarks of Koninklijke Philips N.V.

[www.lighting.philips.com](http://www.lighting.philips.com)