



**We love that you are rocking JLab!
We take pride in our products and fully stand behind them.**

JLAB®
STUDIO PRO ANC
HEADPHONES



YOUR WARRANTY

All warranty claims are subject to JLab authorization and at our sole discretion. Retain your proof of purchase to ensure warranty coverage.



CONTACT US

Reach out to us at support@jlab.com or visit jlab.com/contact

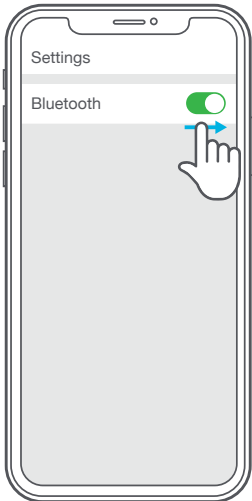
REGISTER TODAY

jlab.com/register

[Product updates](#) | [How-to tips](#)
[FAQs & more](#)

FIRST TIME SETUP: BLUETOOTH PAIRING

1 Turn on the Bluetooth in your device settings.



2 Press and hold button for **8 seconds**. Release. Lights will **flash blue/red**.



3 Select "JLab Studio Pro ANC" in your device settings to connect.



PAIRING NEW / ADDITIONAL DEVICES:

Turn OFF Bluetooth on your previously paired device and turn ON Bluetooth on new device. Repeat **FIRST TIME STEUP** process for new devices.

Notes:

- Bluetooth is a wireless radio technology, which means it is sensitive to objects between the headphone and the connected device. The headphone is designed to be used within 33 feet (10 meters) of a connected device, with no major objects in between (walls, etc.).
- Once successfully connected, the headphone will memorize your device and automatically pair when turned on in the future. Only one device may be connected at a time. To pair a different device, first unpair the current one through its Bluetooth settings.
- If for any reason Bluetooth connection is lost, manually reconnect your Bluetooth device.

BUTTON FUNCTIONS

VOLUME UP: Press once
TRACK FORWARD: Press & hold 2+ seconds

VOLUME DOWN: Press once
TRACK BACKWARD: Press & hold 2+ seconds

POWER ON / OFF: Press & hold 2+ seconds

PLAY / PAUSE / ANSWER / HANG UP CALLS:
Press once

REJECT INCOMING CALL: Press & hold 1 second

ACTIVATE SIRI (iOS) OR "OK GOOGLE" (ANDROID):
Press twice

BLUETOOTH PAIRING: See FIRST TIME SETUP



SWITCH EQ:
Press and hold both buttons simultaneously for 3+ seconds

 **JLab SIGNATURE**
(One Beep)

JLab C3™ signature sound with amplified vocals and bass

 **BALANCED**
(Two Beeps)

Even sound with no additional sound enhancements

 **BASS BOOST**
(Three Beeps)

Amplified bass and sub-bass

ACTIVE NOISE CONTROL



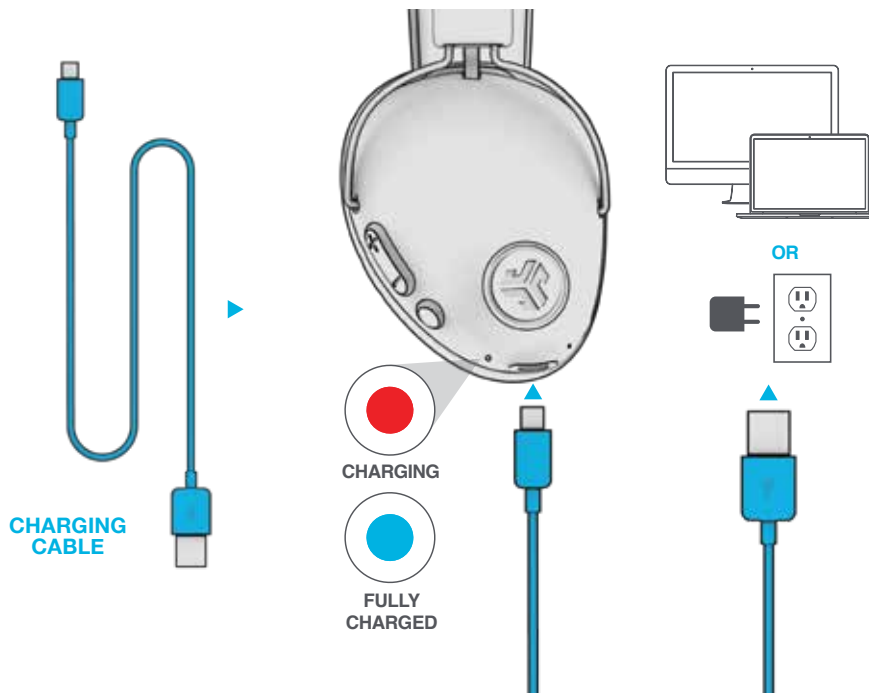
CONNECTED TO BLUETOOTH:
CYCLE BE AWARE / ANC HIGH / ANC LOW / ANC OFF:
Press once

CONNECTED TO AUX:
Press and hold 2+ seconds to power ON ANC.
CYCLE BE AWARE / ANC HIGH / ANC LOW / ANC OFF:
Press once

NOISE CONTROL ON

CHARGING

Connect to computer or USB 5v 1A (or less) output device.



AUX INPUT



NOTE:

- The ANC function can work when connected with AUX INPUT. Press and hold 2+ seconds the ANC button to power ON ANC.
- The AUX INPUT will override your Bluetooth device connection. Unplug and press power button 2+ seconds to revert back to Bluetooth.
- The button functions for your Bluetooth device will not work when AUX INPUT is connected.
- The volume will be dependent on your AUX device settings. Adjust accordingly.

CAUTIONS

- Avoid getting moisture or liquids on the headphone cups.
- Avoid extreme heat, cold, and humidity.
- Avoid dropping or crushing headphones, stressing the cable by rapid pulling or extreme force, or bending the cable at a sharp angle.
- Wax may build up in headphone cups, lowering the sound quality. Carefully remove the wax with a cotton swab or other small tool to improve the sound quality.
- If you experience discomfort or pain, try lowering the volume or discontinuing use temporarily.
- If you experience regular discomfort while using this product, discontinue use and consult your physician.
- We recommend you treat your headphones as you would a nice pair of sunglasses and keep them in safe location when not in use.



[Shop products](#) | [Product alerts](#) | [Burn-in your headphones](#)

JLab Store + Burn-in Tool

