

**Canon**

# SELPHY CP1500

COMPACT PHOTO PRINTER



Advanced User Guide

**E**

# Contents

---

Introduction. . . . .	4
Before Use. . . . .	5
Printer and Included Accessories. . . . .	6
Ink and Paper (Sold Separately). . . . .	7
Instruction Manuals and SELPHY Photo Layout. . . . .	8
Conventions in This Guide. . . . .	9
Safety Instructions. . . . .	10
Handling Precautions. . . . .	12
Installation Location. . . . .	13
Part Names. . . . .	14
Preparing SELPHY and Printing from SELPHY Photo Layout. . . . .	19
Loading the Ink Cassette. . . . .	20
Loading the Paper Cassette. . . . .	23
Turning the Printer On. . . . .	28
Using SELPHY Photo Layout. . . . .	30
Printing from a Memory Card. . . . .	34
Compatible Cards. . . . .	35
Basic Printing (Select & Print). . . . .	37
More Print Options. . . . .	42
Shuffle Print. . . . .	52
ID Photo. . . . .	55
Printing Wirelessly from Smartphones or Cameras. . . . .	58
Setting up Wi-Fi on SELPHY. . . . .	59
Printing from a Smartphone via AirPrint (iOS). . . . .	62
Printing from a Smartphone via Mopria (Android). . . . .	64
Printing from a Camera. . . . .	65
Subsequent Printing. . . . .	67
Printing via Wi-Fi from a Computer. . . . .	69
Connecting SELPHY to a Wireless Router. . . . .	70
Printing from Windows. . . . .	78

Printing from macOS. . . . .	80
Printing over a USB Connection. . . . .	82
Printing from Windows. . . . .	83
Printing from macOS. . . . .	85
Printing from a Camera. . . . .	87
Configuring Settings. . . . .	88
Print Settings. . . . .	89
Printer Setup. . . . .	96
Other Wi-Fi Settings. . . . .	99
Reference. . . . .	102
Troubleshooting. . . . .	103
Printing Without a Power Outlet. . . . .	111
Storing Prints. . . . .	114
After Printing. . . . .	115
Specifications. . . . .	116
Trademarks and Licensing. . . . .	125

# Introduction

---

- [Before Use](#)
- [Printer and Included Accessories](#)
- [Ink and Paper \(Sold Separately\)](#)
- [Instruction Manuals and SELPHY Photo Layout](#)
- [Conventions in This Guide](#)
- [Safety Instructions](#)
- [Handling Precautions](#)
- [Installation Location](#)
- [Part Names](#)

## Before Use

---

- Images printed with this product are to be used for personal enjoyment. Unauthorized printing of copyrighted material is prohibited.
- The printer warranty is valid only in the country or area of purchase. In case of printer problems while abroad, return to the area of purchase before contacting a Customer Support Help Desk.
- Although the monitor is produced under extremely high-precision manufacturing conditions and more than 99.99% of the pixels meet design specifications, in rare cases some pixels may be defective or may appear as red or black dots. This is not a malfunction. Also, this will not affect printed images.
- The monitor may be covered with a thin plastic film for protection against scratches during shipment. If so, remove the film before use.

## Printer and Included Accessories

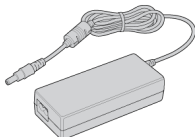
---

Before use, make sure the following items are included in the package. If anything is missing, contact your dealer.

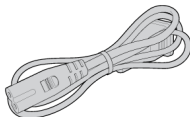
---



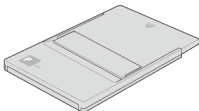
**SELPHY Printer**



**Compact Power Adapter**



**Power Cord**



**Paper Cassette**

- Printed matter is also included.
- Purchase a Color Ink / Paper Set separately.

## Ink and Paper (Sold Separately)

- For best performance and easier printing, use genuine Canon Color Ink / Paper Sets for SELPHY CP printers.
- Regular postcards cannot be used with this printer, and ink and paper for the SELPHY ES series, SELPHY SQUARE QX10, or iNSPIC are not compatible.
- Accessory availability varies by region.

Color Ink / Paper Set		
Product Name	Paper Size Description	Number of Prints Available
Color Ink / Paper Set KL-36IP* <sup>1</sup>	L size	36
Color Ink / Paper Set KL-36IP 3PACK* <sup>1</sup>		108
Color Ink / Paper Set KP-36IP (Postcard)	Postcard size	36
Color Ink / Paper Set KP-108IN (Photo Paper)		108
Color Ink / Paper Set KC-36IP* <sup>2</sup>	Card size	36
Color Ink / Label Set KC-18IF (Full-Page Label)* <sup>2</sup>		18
Color Ink / Label Set KC-18IL (8 Labels per Page)* <sup>2</sup>		18
Color Ink / Label Set KC-18IS (Square Labels)* <sup>2</sup>		18

\* 1: Use the adapter for L-size paper in the cassette.

\* 2: Requires Paper Cassette PCC-CP400.

## Instruction Manuals and SELPHY Photo Layout

---



The included Instruction Manual provides basic SELPHY instructions.

- **Advanced User Guide**

Complete instructions are provided in this Advanced User Guide. For the latest Advanced User Guide, refer to the following website.  
<https://cam.start.canon/P001/>



- **SELPHY Photo Layout**

We recommend using the SELPHY Photo Layout mobile app when printing from a smartphone.

You can download it from the following website.

<https://cam.start.canon/spl/>



 **Note**

- To display a QR code for connecting to SELPHY, choose **[Wi-Fi settings]** on the Home screen, then choose **[Display Wi-Fi status]**.
- The first time you use SELPHY, install SELPHY Photo Layout as described in [Preparing SELPHY and Printing from SELPHY Photo Layout](#).












## Conventions in This Guide

---

- In this guide, the product is referred to as “SELPHY” or “the printer”.
- On-screen text or icons are shown in square brackets, as in [ ].
- Instructions in this guide apply to the printer under default settings.
- For convenience, all supported memory cards are simply referred to as “memory card”.
- For convenience in this guide, smartphones, tablets, and other compatible devices are collectively referred to as “smartphones”.

## Icons in This Guide

---

<  >	Power button
< MENU >	Menu button
< OK >	OK button
<  >	Up button
<  >	Down button
<  >	Left button
<  >	Right button
<  >	Back button
	Links to pages with related topics.
	Warnings to prevent printing problems.
	Supplemental information.

## Safety Instructions

---

Be sure to read these instructions in order to operate the product safely.  
Follow these instructions to prevent injury or harm to the operator of the product or others.



### WARNING

Denotes the risk of serious injury or death.

- Use only power sources specified in this instruction manual for use with the product.
- Do not disassemble or modify the product.
- Do not expose the product to strong shocks or vibration.
- Do not touch any exposed internal parts.
- Stop using the product in any case of unusual circumstances such as the presence of smoke or a strange smell.
- Do not use organic solvents such as alcohol, benzene or paint thinner to clean the product.
- Do not get the product wet. Do not insert foreign objects or liquids into the product.
- Do not use the product where flammable gases may be present.

This may cause electric shock, explosion or fire.

- Do not touch the product connected to a power outlet during lightning storms.

This may cause electric shock.

- Periodically remove any dust buildup from the power plug and power outlet using a dry cloth.
- Do not plug in or unplug the product with wet hands.
- Do not use the product if the power plug is not fully inserted into the power outlet.
- Do not expose the power plug and terminals to dirt or let them come into contact with metallic pins or other metal objects.
- Do not touch the battery charger or AC adapter connected to a power outlet during lightning storms.
- Do not place heavy objects on the power cord. Do not damage, break or modify the power cord.
- Do not wrap the product in cloth or other materials when in use or shortly after use when the product is still warm in temperature.
- Do not leave the product connected to a power source for long periods of time.
- Do not charge batteries/battery packs at temperatures outside the range of 5 - 40 °C (41 - 104 °F).

This may cause electric shock, explosion or fire.

- Follow any indications to turn off the product in places where its use is forbidden.

Not doing so may cause other equipment to malfunction due to the effect of electromagnetic waves and even result in accidents.



## CAUTION

Follow the cautions below. Otherwise physical injury or property damage may result.

- Avoid using, placing, or storing the product in the following places:
  - Places subject to direct sunlight
  - Places subject to temperatures above 40 °C (104 °F)
  - Humid or dusty places
  - Places subject to strong vibration

This may cause overheating of or damage to the printer or adapter, which may result in electric shock, burns or other injury, or fire. High temperature may deform the product or adapter(s).

- Do not touch any parts inside the product.

This may cause injury.

## Handling Precautions

---

- Unplug the product from the power outlet when you are not using it.
- Do not place anything, such as cloth, on top of the product while in use.

Leaving the product plugged in for a long period of time may cause it to overheat and distort, resulting in fire.

- Never reuse paper for printing, even if most of the paper is blank.

Reusing paper may damage the printer if paper jams or the ink sheet adheres to the paper.

- Do not unplug the printer while it is printing.

If you accidentally turn the printer off while printing, restart it and wait until the paper is ejected. If paper jams and cannot be removed, contact your retailer or a Customer Support Help Desk. Do not attempt to remove jammed paper by force, which may damage the printer.

- Do not use the printer near motors or other devices that generate strong magnetic fields, near TVs or radios, or in dusty environments.

This may damage the printer or cause malfunction.

- The included power cord is only for use with this product.

The power cord cannot be used with other products.

- Basic product information is provided on the bottom of the printer and compact power adapter.

- Do not subject the printer to excessive force, which may damage the printer or cause paper jams.

- Do not expose the printer to insecticides or other volatile substances. Additionally, do not store the printer in contact with rubber, vinyl, or plastic products over extended periods, which may cause deformation of the casing.

- Avoid condensation on the printer, which may happen when moving the printer from cold to warm environments. Put the printer in a sealed plastic bag and allow it to adjust to the new temperature before removing the bag. If condensation forms, allow the printer to dry naturally at room temperature before using again.

- When the printer becomes dirty, wipe it with a soft, dry cloth.

- If the air vents become dusty, remove the ink cassette before wiping the dust away, to prevent dust from getting inside and affecting print quality.



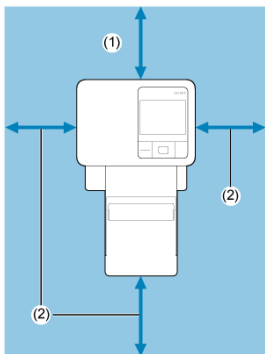
### Caution

- Never wipe the printer with solvents, such as benzene or thinner, or neutral detergent, which may cause deformation or peeling of the casing.

## Installation Location

---

- Place the printer on a table or other flat, stable surface. Never place the printer on an unstable or tilted surface.
- Leave some space open behind SELPHY for paper to emerge temporarily during printing.



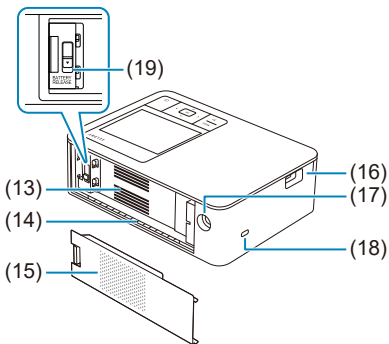
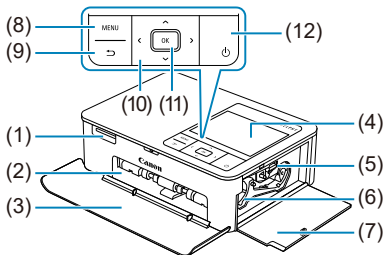
- (1) At least as long as the paper for printing  
(2) At least 10 cm (4 in.)

## Part Names

---

[Home Screen](#)

[Image Selection Screen](#)



- (1) Memory card slot
- (2) Paper cassette compartment
- (3) Paper cassette compartment cover
- (4) Monitor
- (5) Ink cassette lock
- (6) Ink cassette compartment
- (7) Ink cassette compartment cover
- (8) < MENU > Menu button
- (9) < ⏪ > Back button
- (10) < ▲ > Up, < ▼ > down, < ◀ > left, and < ▶ > right buttons
- (11) < OK > OK button
- (12) < ⏻ > Power button
- (13) Air vents
- (14) Paper ejection slot
- (15) Battery pack mounting cover
- (16) USB port
- (17) DC IN (power input) terminal
- (18) Security slot
- (19) Battery release lever

**Note**

- Security cables, such as a Kensington lock, can be attached to the security slot.

## Home Screen



- (1) **Select & Print**  
Select images, specify the print quantity, and print.
- (2) **More print options**  
Print in a variety of ways, such as printing an index or reprinting previously printed images.
- (3) **Shuffle print**  
Print selected images from a memory card together at automatically selected sizes.
- (4) **Setup**  
Set up printing or other printer operation.
- (5) **Remaining battery level**  
Shows the remaining battery level in range of 1–4 when a battery pack is used.
- (6) **Wi-Fi settings**  
Set up a Wi-Fi connection.
- (7) **Active connections**  
Displayed when connected via Wi-Fi.
- (8) **ID Photo**  
Print ID photos for passports or other documents.

Press < ^ > < v > < < > > to select a menu, and then press < OK >.

### Note

- To return to the Home screen from other screens, press < ↶ > repeatedly.



## Image Selection Screen

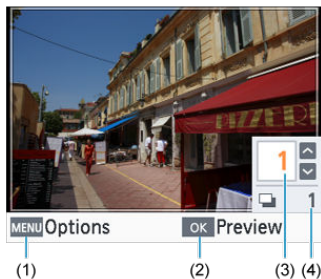
### Multi playback screen



- 
- (1) Screen displayed when < ⬅ > is pressed. Enables you to return to the Home screen.
- 
- (2) Screen displayed when < OK > is pressed. Switches to single playback screen.
- 
- (3) Screen displayed when < MENU > is pressed. Shows **[Options]**.
- 

Use < ^ > < v > < < > > to select images.

## Single playback screen



- 
- (1) Screen displayed when <MENU> is pressed. Shows **[Options]**.
- 
- (2) Screen displayed when <OK> is pressed. Shows a preview screen.
- 
- (3) Print quantity for the current image. For shuffle printing or ID photos, a check mark is displayed.
- 
- (4) Total quantity if you have printed other images.
- 

Use < <> > to select images.

Use < ^> > to set the print quantity.

## Preparing SELPHY and Printing from SELPHY Photo Layout

---

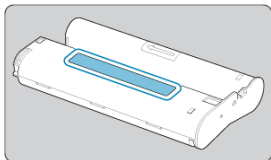
This chapter describes how to prepare for printing and connect SELPHY Photo Layout to SELPHY.

- [Loading the Ink Cassette](#)
- [Loading the Paper Cassette](#)
- [Turning the Printer On](#)
- [Using SELPHY Photo Layout](#)

## Loading the Ink Cassette

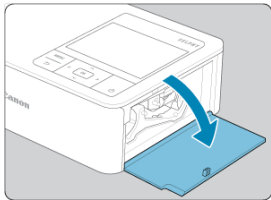
---

1. Check the ink cassette size.

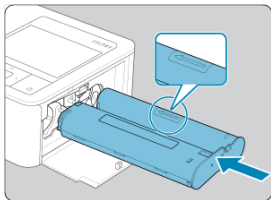


- Make sure the size of the ink cassette matches the size of paper you will use.

2. Open the ink cassette compartment cover.

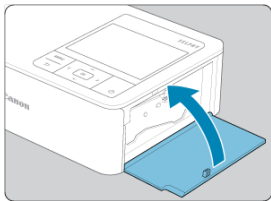


3. Load the ink cassette.

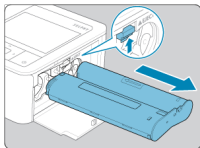


- Insert the ink cassette into the printer in the direction of the arrow on the cassette until it clicks into place.

4. Close the ink cassette compartment cover.



### Changing ink cassettes



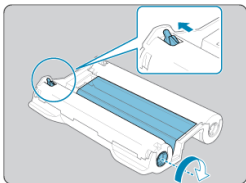
- If a message indicates that the ink has run out, open the ink cassette compartment cover without turning off the power.
- Move the lock in the direction shown to remove the ink cassette, and then insert a new ink cassette (🔗).

#### ⚠ Caution

- Do not touch the ink sheet.
- Avoid getting dust on the ink sheet.
- Do not reuse ink cassettes.

 **Note**

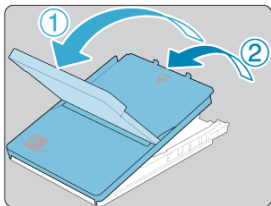
- If the ink sheet is loose, turn the sprocket gently to tighten it.
- For an ink cassette that has a lock on the bottom, press the lock (as shown) to release it as you turn the sprocket to make the sheet taut.



## Loading the Paper Cassette

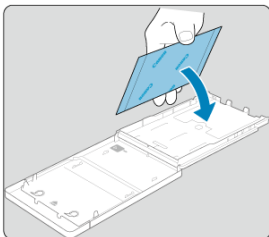
---

### 1. Open the covers.

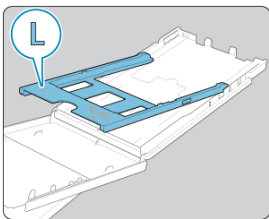


- There are two layers of covers. First open the outer cover (①) and then the inner cover (②).

## 2. Load the paper.

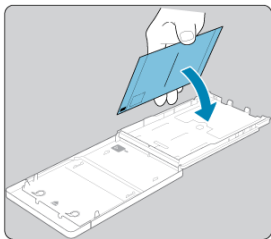


- Remove the paper cassette paper from the bag, remove any protective sheets from the paper, and load all paper (18 sheets) in the paper cassette.
- Loading 19 or more sheets may damage the printer or cause malfunction.
- Holding the paper as shown, load it with the glossy side up.
- Do not touch the printing surface, which is glossy.



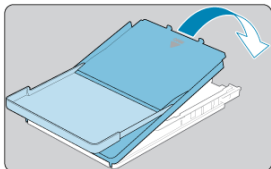
- When printing on postcard-size paper, before loading the paper, remove the L-size adapter as shown, if it is attached.





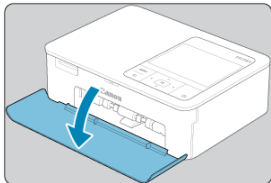
- When making postcard prints with space for a stamp, load the paper with the stamp area facing as shown.

### 3. Close the inner cover.

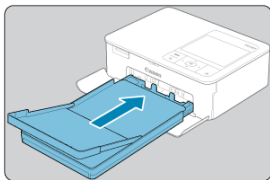


- Close the inner cover firmly until it clicks into place.
- Leave the outer cover open when printing.

### 4. Open the paper cassette compartment cover.

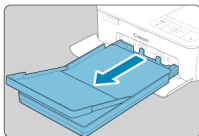


## 5. Load the paper cassette.



- Making sure the outer cover is open, insert the paper cassette all the way into the compartment. (It slides about 2 cm (0.8 in.) into the compartment.)

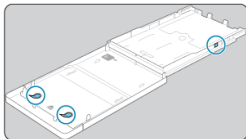
## Adding paper



- If a message indicates that the paper has run out, remove the paper cassette without turning off the power.
- Add more paper to the cassette and reinsert the cassette in SELPHY (🔗).

**Caution**

- Never do the following. This may damage the printer or cause malfunction.
  - Loading paper upside-down, with the glossy and back sides reversed
  - Bending or separating paper at the perforations before printing
  - Using label paper whose upper label surface is peeling off or has been partially pulled up
  - Writing on paper before printing
  - Reusing paper, as by printing on blank areas (🚫)
- Do not touch the springs on the paper cassette. Accidentally bending the springs may prevent efficient paper feeding.

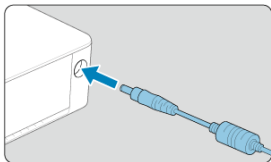


- Note that one spring is attached in the center on the top of card-size paper cassettes.
- Avoid touching or rubbing the glossy, printing side of the paper. Do not handle paper with wet hands, and keep paper free of dust. Dirt or moisture may cause banding or affect print quality, or damage the printer (🚫).

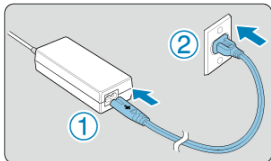
## Turning the Printer On

---

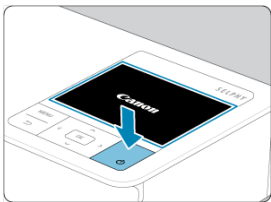
1. Connect the adapter cord to SELPHY.



2. Connect and plug in the power cord.



3. Turn on SELPHY.

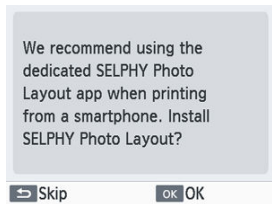


- Hold down <power> until "Canon" is displayed, and then release <power>.

## 4. Choose a language.

English	Español	ภาษาไทย
Deutsch	Русский	简体中文
Français	Tiếng Việt	繁體中文
Português	हिन्दी	한국어
Italiano	Türkçe	B.Malaysia
Українська	العربية	日本語

- The language selection screen is displayed the first time you turn on the power.
- Press < ^ > < v > < < > < > > to choose a language.
- You are now asked about installing SELPHY Photo Layout.



- If you will use SELPHY Photo Layout, press < OK > and go to [Using SELPHY Photo Layout](#).
- If you prefer not to use SELPHY Photo Layout, press < ⏪ >. Check the information on the next screen, then press < OK > to display the Home screen.

### Note

- We recommend using the dedicated SELPHY Photo Layout mobile app when printing from a smartphone.
- To turn off SELPHY, hold down < ⏻ > again until the screen changes.

# Using SELPHY Photo Layout

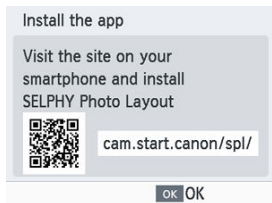
---

## [Connecting Other Smartphones](#)

Install SELPHY Photo Layout on your smartphone and use it to connect to SELPHY. Do this after following the steps in [Turning the Printer On](#).

---

### 1. Install the app.



- Scan the QR code on the monitor with your smartphone to access the site.
- Press < OK >. Your smartphone connects to the following site.

### Smartphone screen



- Install SELPHY Photo Layout on the smartphone.

## 2. Establish a connection.

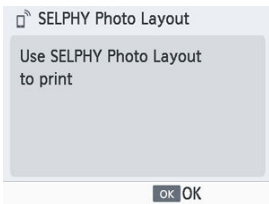


- Start SELPHY Photo Layout, choose **[SELPHY CP1500]** on the printer selection screen, and then follow the instructions displayed.
- Press < OK >.



- After the QR code scanning screen appears in SELPHY Photo Layout, scan the QR code on the monitor.
- Press < OK >.

## 3. Print.



- Print from SELPHY Photo Layout.

### Caution

- Never pull out the paper cassette, open the ink cassette compartment cover, or remove a memory card while printing or when you hear printer operation sounds immediately after it has been turned on. This may damage the printer.
- To cancel printing in progress, always press < ⏪ >. Printing cannot be canceled by pressing < ⏻ >, and unplugging the printer may damage it.

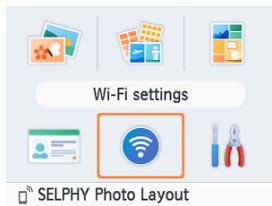
### Note

- The **[Install the app]** screen is not displayed in step 1 unless this is the first time you have turned on SELPHY. To access it, scan the QR code with your smartphone as described in [Instruction Manuals and SELPHY Photo Layout](#).
- If the QR code cannot be scanned in step 2, tap **[Manual Registration]** on the scanning screen in SELPHY Photo Layout and enter the ID and password shown on SELPHY when you press < **MENU** >.

## Connecting Other Smartphones

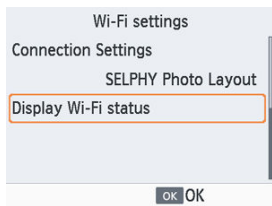
You can also print from other smartphones using SELPHY Photo Layout. When the screen for scanning the QR code on the printer to connect to appears in SELPHY Photo Layout, display the QR code on the monitor and scan it as follows.

1. Choose **[Wi-Fi settings]** and press < **OK** >.





2. Choose [Display Wi-Fi status] and press < OK >.



3. Scan the QR code with your smartphone.



## Printing from a Memory Card

---

This chapter describes how to select and print images on a memory card.

- [Compatible Cards](#)
- [Basic Printing \(Select & Print\)](#)
- [More Print Options](#)
- [Shuffle Print](#)
- [ID Photo](#)

## Compatible Cards

---

 [USB Flash Drives](#)

 [Images You Can Print](#)

### No adapter required

- SD memory cards
- SDHC memory cards
- SDXC memory cards



### Adapter required (sold separately)

- miniSD memory cards
- miniSDHC memory cards



- microSD memory cards
- microSDHC memory cards
- microSDXC memory cards

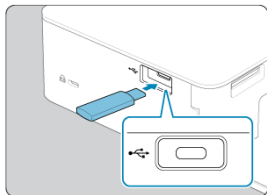
#### Caution

- For memory cards that require an adapter, always insert the card into the adapter before inserting the adapter into the memory card slot. If you mistakenly insert the memory card into the memory card slot without an adapter, you may not be able to remove the card from the printer.
- Use a memory card formatted with the device you shot the photos with. Images on cards formatted with a computer may not be recognized.

## USB Flash Drives

---

Images on commercially available USB Type-C flash drives can be printed the same way as images on memory cards.



- Remove any inserted memory cards.
- Insert a USB flash drive as shown.

## Images You Can Print

---

JPEG images conforming to the Exif standard can be printed with SELPHY.

### **Note**

- Images may not be displayed or printed correctly if they have been edited on a computer, or if the long side exceeds 35000 pixels.

## Basic Printing (Select & Print)

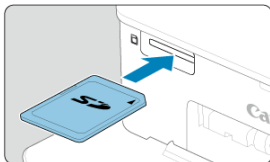
---

### [Options](#)

Select images on a memory card and print them as follows.

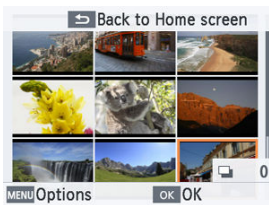
---

#### 1. Insert the memory card into the memory card slot.



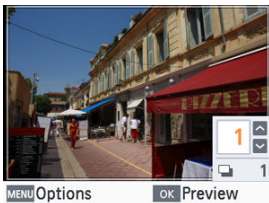
- Insert the memory card facing as shown until it clicks into place.
- To remove the card, push it in until it clicks, and then slowly release it.
- The **[Select & Print]** multi playback screen is displayed.

#### 2. Choose an image.



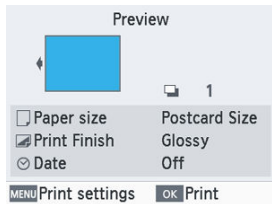
- Press  $\langle \wedge \rangle \langle \vee \rangle \langle \times \rangle \langle \times \rangle \langle \times \rangle \langle \times \rangle$  to select an image to print.
- To switch to the single playback screen and view the current image, press  $\langle \text{OK} \rangle$ .

### 3. Choose the print quantity.




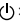
- Press < ^ > or < v > to choose the print quantity.
- To choose another image to print at the same time, press < < > or < > >, and then choose the print quantity.
- Press < OK > to access the **[Preview]** screen.

### 4. Print.



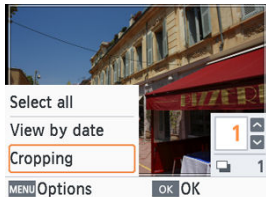
- Press < OK > to start printing.
- To adjust the settings displayed, press < MENU > and change the settings on the **[Print settings]** screen (🔍).
- While printing, paper passes in and out of the back of SELPHY several times. Do not touch the paper until printing is finished and the print is ejected onto the paper cassette.
- Do not allow 19 or more prints to collect in the ejection area on the paper cassette.

 **Caution**

- Never pull out the paper cassette, open the ink cassette compartment cover, or remove a memory card while printing or when you hear printer operation sounds immediately after it has been turned on. This may damage the printer.
- To cancel printing in progress, always press <  >. Printing cannot be canceled by pressing <  >, and unplugging the printer may damage it.

## Options

On the image selection screen, you can view images by date and crop the selected image.



- Press < MENU > on the image selection screen.
- Choose an option and press < OK >.
- All [Options] settings are reset when you turn off SELPHY or remove the memory card.

### Select all

Selects all images on a memory card or USB flash drive at once (up to 5,000 images). The total print quantity is increased by one for each image (up to a total print quantity of 99).

### View by date

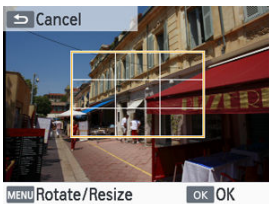
To view photos taken on a certain date, choose the date on the screen for viewing by date. If you have many images, this can help you find ones you want to print.

### Cropping

Displays a crop frame on the single playback screen. Only the area inside the crop frame is printed.



## 1. Adjust the image area to crop.



- Each press of < MENU > switches between a mode for moving the crop frame and a mode for rotating or resizing it.

### Crop frame movement mode

- To move the crop frame, press < ^ > < v > < < > > < > > > .

### Crop frame rotation and resizing mode

- To enlarge the crop frame, press < ^ >, and to reduce it, press < v > .
- To switch the crop frame between portrait and landscape orientation, press < < > > > .

## 2. Confirm the setting.

- Press < OK > to confirm the cropping area.

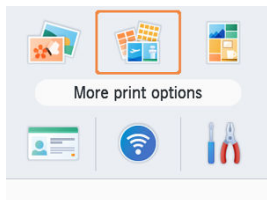
### Note

- [Adjust Cropping] in [Options] enables you to adjust the cropping area, and [Reset Cropping] resets the cropping setting.

## More Print Options

---

[**More print options**] on the Home screen offers index printing, reprinting, and other features for images on memory cards or USB flash drives.



- Insert a loaded paper cassette and an ink cassette in SELPHY (🔗, 🔗).
  - Choose [**More print options**] and press < OK >.
- 

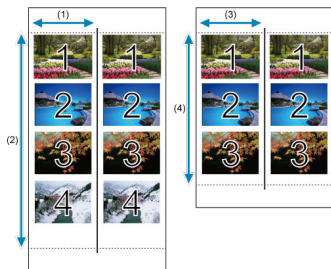
[Bookmark](#)

[2-Up Fixed Size Print](#)

[Index Print](#)

[DPOF Print](#)

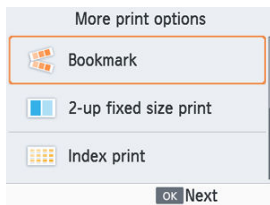
[Reprint](#)



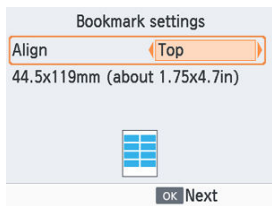
Print two sets of selected images on a single sheet of L-size or postcard-size paper (☑).

- On postcard-size paper, rows of four images are arranged in an area that is 2 in. (1) by 6 in. (2).
- On L-size paper, rows of three images are arranged in an area that is approx. 1.75 in. (3) by 4.7 in. (4).

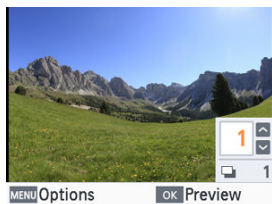
### 1. Choose [Bookmark] and press < OK >.



2. Adjust the settings as needed, and then press <OK>.

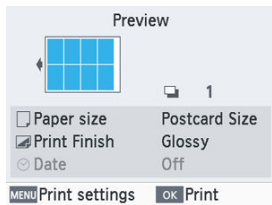


3. Choose images.



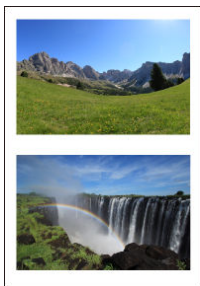
- Choose images, each with a print quantity of [1]. For L-size paper, choose up to 3 images, and for postcard-size paper, up to 4.
- Press <OK> to access the **[Preview]** screen.

4. Print.



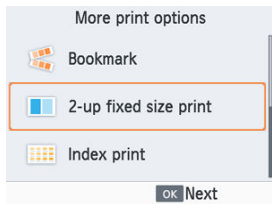
- Press <OK> to start printing.

## 2-Up Fixed Size Print

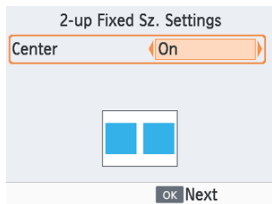


Two images can be printed together, each at about the size of a card, on one L or postcard-size sheet (🔒).  
Cut along the cut marks in the corners to trim to card size.

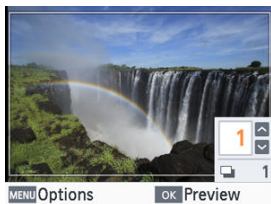
1. Choose [2-up fixed size print] and press <OK>.



2. Adjust the settings as needed, and then press <OK>.

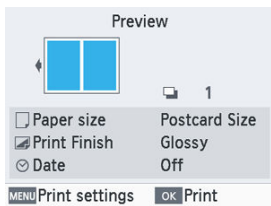


### 3. Choose images.

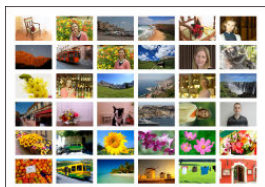


- Choose two images, each with a quantity of [1].
- Press < OK > to access the **[Preview]** screen.

### 4. Print.

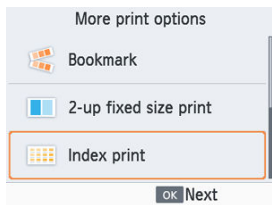


- Press < OK > to start printing.

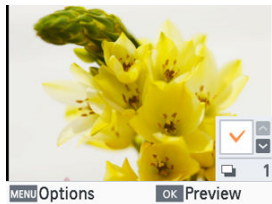


Selected images are printed next to each other in rows. The number of images per sheet varies depending on the paper size.

### 1. Choose [Index print] and press < OK >.

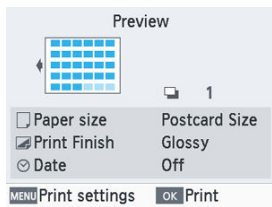


### 2. Choose images.



- Pressing < ^ > places a check mark in the quantity field.
- Press < OK > to access the [Preview] screen.

### 3. Print.



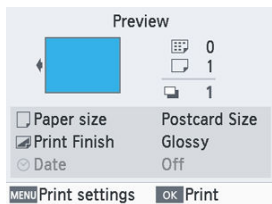
- Press <OK> to start printing.



## DPOF Print

Inserting a memory card with printing information set on a camera will display **[DPOF images remain Print images?]**. To review the printing information set on the camera, press < OK >.

### 1. Print.



- To adjust the settings displayed, press < MENU > and change the settings on the **[Print settings]** screen (🔍).
- Press < OK > to print all designated images at once.

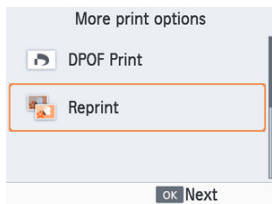
#### Note

- As long as a memory card with printing information set on a camera is inserted, you can also access this screen by choosing **[DPOF Print]** and pressing < OK >.

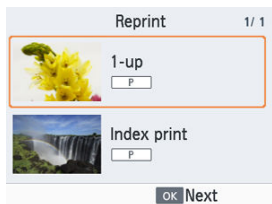
## Reprint

The printer keeps a record of images printed from **[Select & Print]** and **[ID Photo]** on the Home screen, as well as **[Bookmark]**, **[2-up fixed size print]**, and **[Index print]** in **[More print options]**. Images can be printed again by selecting them from these records.

1. Choose **[Reprint]** and press **< OK >**.

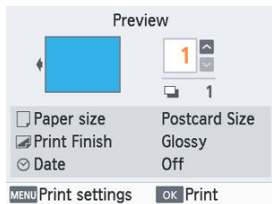


2. Choose an image that was printed.



- Choose an image that was already printed to print it again.
- Press **< OK >** to access the **[Preview]** screen.

### 3. Print.



- Press < OK > to start printing.
- Pressing < ^ > < v > enables you to set the print quantity.

#### Note

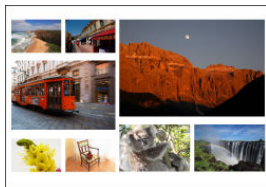
- The print history is erased when you turn off the printer or remove memory cards or USB flash drives.
- SELPHY stores up to 10 items in the print history.
- A record is created for the data of each sheet printed.

## Shuffle Print

---

Use **[Shuffle print]** on the Home screen to arrange images in a variety of sizes on one sheet automatically.

Use shuffle print for images on memory cards or USB flash drives as follows.



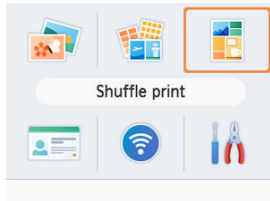
- Load an ink cassette and paper cassette (with any paper except card size) in SELPHY (🔗, 🔗).



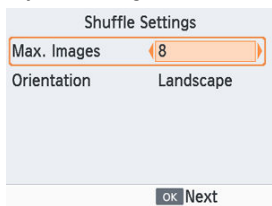
### Note

- Shuffle printing is not available for images with an aspect ratio narrower than 3:1.

1. Choose **[Shuffle print]** and press **< OK >**.

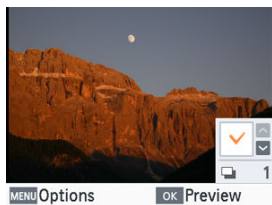


2. Adjust the settings as needed, and then press <OK>.



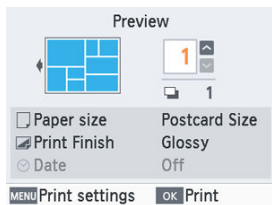
- To use shuffle print for up to 8 images, set [**Max. Images**] to [8], and for 9–20 images, set it to [20].

3. Choose images.



- Pressing < ^ > places a check mark in the quantity field.
- Press <OK> to access the [**Preview**] screen.

## 4. Print.



- Press < OK > to start printing.
- Pressing < ^ > < v > enables you to set the print quantity.
- Printing is possible even with fewer images than the maximum set in **[Max. Images]** (8 or 20), and if you choose more images than this, a second sheet is used for shuffle printing. In shuffle printing on two sheets, half of the selected images are printed on each sheet.

## ID Photo

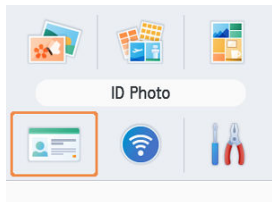
---

Images on memory cards or USB flash drives can be printed for use in photo identification from **[ID Photo]** on the Home screen.

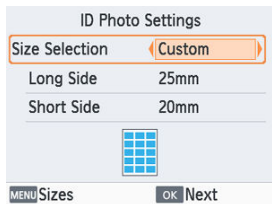


- Load an ink cassette and paper cassette (with any paper except card size) in SELPHY (🔗, 🔗).
- 

1. Choose **[ID Photo]** and press **<OK>**.



## 2. Choose a size.

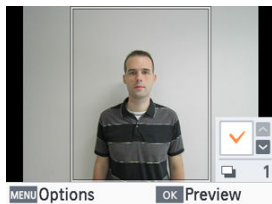


- Choose from these three sizes.

[Custom]	Specify the length of the long and short sides before printing.
[Standard]	Print a photo that complies with the international ICAO standard.
[Dual]	Print two sizes: 50×50 mm (approx. 2.0×2.0 in.) and 45×35 mm (approx. 1.8×1.4 in.).

- [Custom]: Select the long side length in [Long Side], and then select the [Short Side] length. [Short Side] options are automatically updated based on [Long Side] length.
- On the [Sizes] screen, you can limit the sizes listed for [Custom] so that only the sizes used most often are shown.

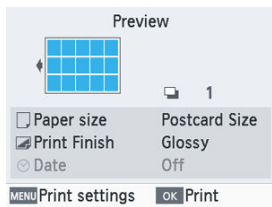
## 3. Choose images.



- Pressing < ^ > places a check mark in the quantity field.
- With [Custom] and [Standard], you can select up to two images.
- Press < OK > to access the [Preview] screen.
- To crop the image, press < MENU > and choose [Cropping] (✂).



## 4. Print.





- Press < OK > to start printing.

## Printing Wirelessly from Smartphones or Cameras

---

This chapter describes how to print by connecting SELPHY to your smartphone or camera via Wi-Fi.

For details on printing with SELPHY Photo Layout, see [Using SELPHY Photo Layout](#).

- Remove any inserted memory cards or USB flash drives.
- Insert a paper cassette loaded with your preferred size of paper and an ink cassette in SELPHY (, .
- Make sure your smartphone operating system is up to date.
  - [Setting up Wi-Fi on SELPHY](#)
  - [Printing from a Smartphone via AirPrint \(iOS\)](#)
  - [Printing from a Smartphone via Mopria \(Android\)](#)
  - [Printing from a Camera](#)
  - [Subsequent Printing](#)



### Note

- You can also print using the dedicated Canon PRINT Inkjet/SELPHY app.

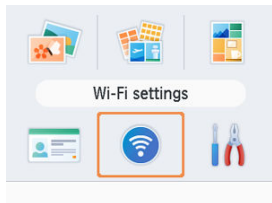
# Setting up Wi-Fi on SELPHY

---

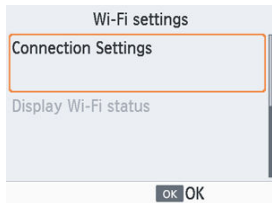
Set up a direct Wi-Fi connection between smartphones or cameras and SELPHY.

---

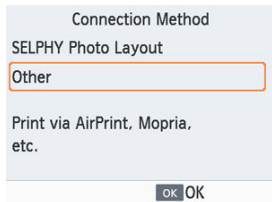
1. Choose [Wi-Fi settings] and press < OK >.



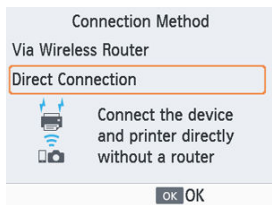
2. Choose [Connection Settings] and press < OK >.



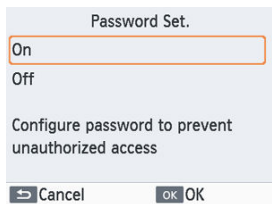
3. Choose [Other] and press < OK >.



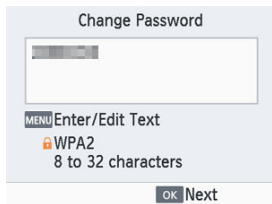
4. Choose [Direct Connection] and press <OK>.



5. Choose [On] and press <OK>.



## 6. Change the password.




- The current password is displayed. Change the password as needed, and then press < OK >.
- Press < MENU > to access the input screen.



- The screen above is displayed. Connect from your smartphone or camera.
- Once you complete the [**Direct Connection**] settings, they can be used for subsequent connections.

### Note

- You can also connect SELPHY to a smartphone or camera via a wireless router .

## Printing from a Smartphone via AirPrint (iOS)

---

You can also print from Apple devices such as iPhones or iPads using AirPrint.

---

1. Set up Wi-Fi on SELPHY (📶).
2. Choose [Print].
  - Choose an image to print in an app on your iPhone or iPad (such as a photo-viewing app), tap [📎], and in the menu options displayed, tap [Print].
3. Set up printer options.
  - In [Printer], choose [Canon SELPHY CP1500].
  - Specify the number of copies.
4. Print.
  - Tap [Print] to print.

### Caution

- [Printer Options] may not be displayed in step 3, depending on AirPrint compatibility of the application. If printer options are not available, printing is not possible from the application.



#### Note

- During printing, a **[Print Center]** icon is listed among recently used apps, and you can do the following operations.
  - To check the status:  
Tap **[Print Center]**.
  - To cancel printing:  
Tap **[Print Center]**, and then tap **[Cancel Printing]**.

## **Printing from a Smartphone via Mopria (Android)**

---

You can print from Android smartphones using the Mopria™ Print Service.

---

- 1. Set up Wi-Fi on SELPHY (☑).**
- 2. Download and install Mopria Print Service.**
- 3. Set Mopria Print Service to ON.**
- 4. Open the printing menu.**
  - Choose an image to print in an app on your Android smartphone (such as a photo-viewing app), and then open the printing menu.
- 5. Set up printing.**
  - As the printer, choose [Canon SELPHY CP1500].
  - Specify the number of copies, paper size, and other details.
- 6. Print.**



## Printing from a Camera

---

You can print as follows by connecting the printer to a camera compatible with DPS over IP, the PictBridge standard for Wi-Fi connections.

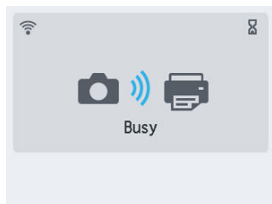
---

### 1. Set up Wi-Fi on SELPHY (🔗).

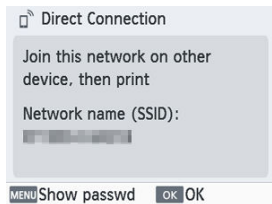
### 2. Connect to SELPHY from the camera.

- In the camera's Wi-Fi menu, select the network name (SSID) shown on SELPHY and enter the password.

### 3. Print.



- Use the camera to select images and print.
- Once printing begins, [**Busy**] is displayed.
- Do not disconnect the devices while the screen shown above is displayed. Images may not be printed correctly or completely.



- The Home screen or screen above is displayed when the camera is no longer connected.



#### **Note**

- Any date or layout settings made on the camera take precedence over print settings made on SELPHY.

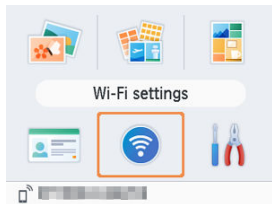
## Subsequent Printing

---

Once you have set up SELPHY for a direct connection, a network name (SSID) is displayed on the bottom of the Home screen. To print after the first connection, select this network name (SSID) on your smartphone or camera. Check the password as follows.

---

1. Choose [Wi-Fi settings] and press < OK >.



2. Choose [Display Wi-Fi status] and press < OK >.



### 3. Check the password.



- Press < **MENU** > to display the password.

## Printing via Wi-Fi from a Computer

---

This chapter describes how to print by connecting SELPHY to your computer via Wi-Fi. Before you can print via Wi-Fi from a computer, the computer with the images to send must be connected to a wireless router.

- Remove any inserted memory cards or USB flash drives.
  - Insert a paper cassette loaded with your preferred size of paper and an ink cassette in SELPHY (📷, 📷).
  - The wireless router must support IEEE 802.11b/g connections.
  - Make sure your operating system is up to date.
- 
- [Connecting SELPHY to a Wireless Router](#)
  - [Printing from Windows](#)
  - [Printing from macOS](#)

# Connecting SELPHY to a Wireless Router

---

How to connect varies depending on whether the router is WPS-compatible.

---

[WPS-Compatible Routers](#)

[Non-WPS Routers](#)

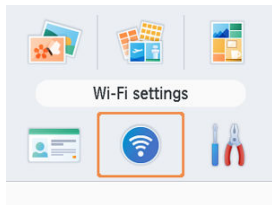
## WPS-Compatible Routers

---

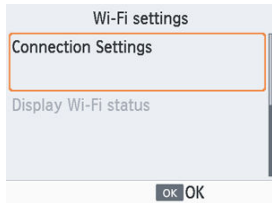
### 1. Check the router.

- Confirm that the router is on and ready for communication.

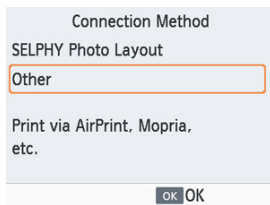
### 2. Choose [Wi-Fi settings] and press < OK >.



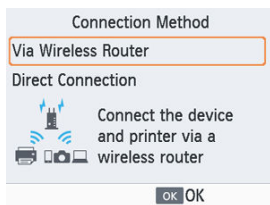
### 3. Choose [Connection Settings] and press < OK >.



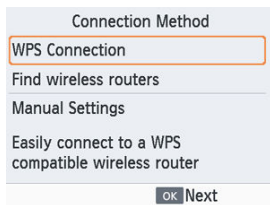
4. Choose [Other] and press < OK >.



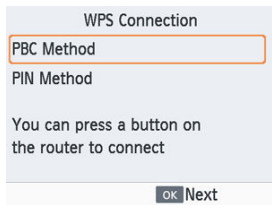
5. Choose [Via Wireless Router] and press < OK >.



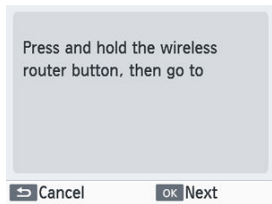
6. Choose [WPS Connection] and press < OK >.



7. Choose [PBC Method] and press < OK >.

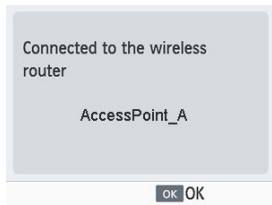


8. On the router, hold down the WPS connection button for a few seconds.



- For details on where the button is located and how long to press it, check the router user manual.
- On SELPHY, press < OK >.

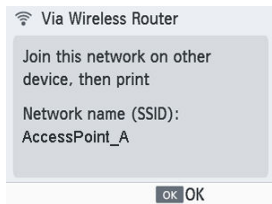
9. Establish the connection.



- Press < OK > when the screen above is displayed.



## 10. Check the router name.



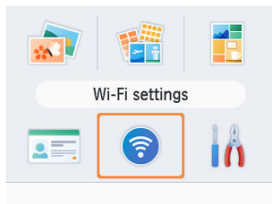
### Note

- If you selected [**PIN Method**] in step 7, enter the PIN code (shown on SELPHY) on the router, press <OK> on SELPHY, and go to step 9. For instructions on configuring PIN codes, refer to the router user manual.

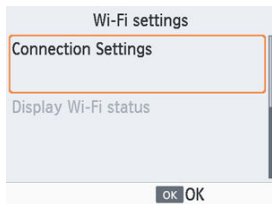
1. Check the router.

- Confirm that the router is on and ready for communication.

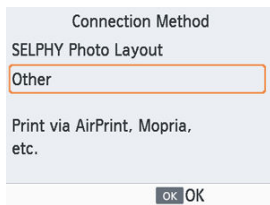
2. Choose [Wi-Fi settings] and press < OK >.



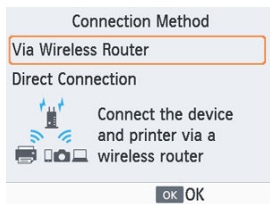
3. Choose [Connection Settings] and press < OK >.



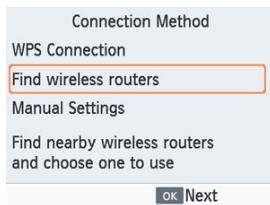
4. Choose [Other] and press < OK >.



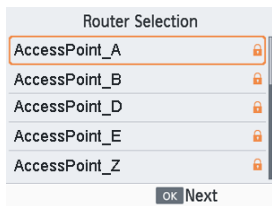
5. Choose [Via Wireless Router] and press < OK >.



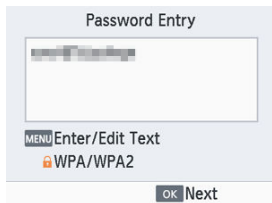
6. Choose [Find wireless routers] and press < OK >.



7. Choose a router, and then press < OK >.

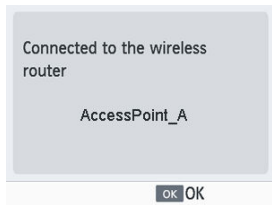


8. Enter the password and press < OK >.

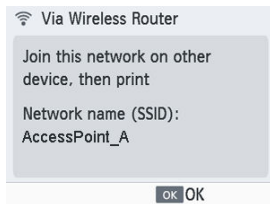


- Press < MENU > to access the input screen, and then enter the password of the router selected in step 7.

9. Confirm that SELPHY is now connected, and then press < OK >.



## 10. Check the router name.



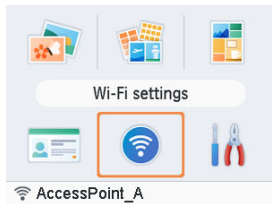
## Printing from Windows

---

You can print from Windows using Mopria.

---

1. Connect SELPHY to a wireless router (🔗).
2. Confirm that SELPHY is connected to the same router as your computer.



- Confirm that the router is identified on the bottom of the Home screen, and that the antenna icon has no red x.

### Steps on the computer

3. Select [Settings] in the Start menu.
4. Select [Devices].
5. Select [Printers & scanners], and then click [Add a printer or scanner].
6. Select [Canon SELPHY CP1500], and then click [Add device].

## **7. Access the printing dialog box.**

- Start the photo software, select images to print, and access the printing dialog box.
- As the destination printer, choose [Canon SELPHY CP1500].

## **8. Choose printing options.**

- Choose a paper size corresponding to the size of paper and ink cassettes in SELPHY. Also choose bordered or borderless printing as an option with the listed paper sizes.
- Choose the printing orientation and number of copies, as desired.

## **9. Print.**

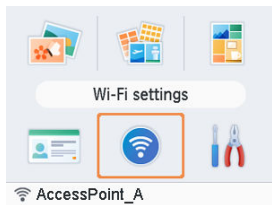
- To print other images, repeat steps 7–9.

# Printing from macOS

---

You can print from macOS using AirPrint.

1. Connect SELPHY to a wireless router (🔗).
2. Confirm that SELPHY is connected to the same router as your computer.



- Confirm that the router is identified on the bottom of the Home screen, and that the antenna icon has no red x.

## Steps on the computer

3. From [System Preferences], open [Printers & Scanners] or [Print & Scan].
4. Click [+] below the list.
5. Choose [Canon SELPHY CP1500].
6. Click [Add].



## 7. Access the printing dialog box.

- Start the photo software, select images to print, and access the printing dialog box.
- As the destination printer, choose [Canon SELPHY CP1500].

## 8. Choose printing options.

- Specify the paper size, orientation, and number of copies.
- Choose one of these paper sizes.

Paper Size Description	Paper Size
L Size	89×119 mm
P Size	Postcard
C Size	54×86 mm

## 9. Print.

- Click **[Print]** to print.
- To print other images, repeat steps 7–9.

### Note

- Authentication is required in order to display the printer's webpage from printer settings screens in macOS. Log in by entering ADMIN as the name, and as the password, enter the MAC address without colons (for example, AA:BB:CC:DD:EE:FF -> AABBCCDDEEFF). You can check the MAC address in **[Wi-Fi settings]** ► **[Confirm Settings]** ► **[MAC Address]**. If you have changed the password and no longer remember it, use **[Reset Settings]** in **[Wi-Fi settings]** or **[Reset all to default]** in **[Setup]** on SELPHY to restore the default password.

## Printing over a USB Connection

---

This chapter describes how to print by connecting SELPHY to a computer or PictBridge (USB) compatible camera with a USB cable.

- Prepare this kind of USB cable.
  - Commercially available cable not exceeding 2.5 m (8.2 ft.)
  - SELPHY end: Type-C
- Remove any inserted memory cards or USB flash drives.
- Insert a paper cassette loaded with your preferred size of paper and an ink cassette in SELPHY (📄, 📄).
- Make sure your operating system is up to date.
  - [Printing from Windows](#)
  - [Printing from macOS](#)
  - [Printing from a Camera](#)

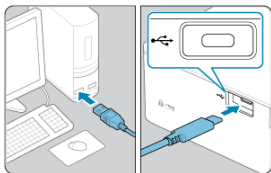
## Printing from Windows

---

You can print from Windows using Mopria.

---

1. Turn on SELPHY and the computer.
2. Connect SELPHY to the computer with a USB cable.



### Steps on the computer

3. Select [Settings] in the Start menu.
4. Select [Devices].
5. Select [Printers & scanners], and then click [Add a printer or scanner].
6. Select [Canon SELPHY CP1500], and then click [Add device].
7. Access the printing dialog box.
  - Start the photo software, select images to print, and access the printing dialog box.
  - As the destination printer, choose [Canon SELPHY CP1500].

## 8. Choose printing options.

- Choose a paper size corresponding to the size of paper and ink cassettes in SELPHY. Also choose bordered or borderless printing as an option with the listed paper sizes.
- Choose the printing orientation and number of copies, as desired.

## 9. Print.

- To print other images, repeat steps 7–9.



### Caution

- Avoid sleep or standby mode on your computer while SELPHY is connected via USB. If the computer enters sleep mode with SELPHY connected via USB, wake the computer without disconnecting the USB cable. If recovery fails, restart the computer.

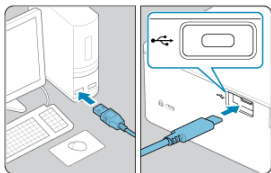
# Printing from macOS

---

You can print from a computer using AirPrint.

---

1. Turn on SELPHY and the computer.
2. Use the USB cable to connect SELPHY to the computer.



## Steps on the computer

3. From [System Preferences], open [Printers & Scanners] or [Print & Scan].
4. Click [+] below the list.
5. Choose [Canon SELPHY CP1500].
6. Click [Add].
7. Access the printing dialog box.
  - Start the photo software, select images to print, and access the printing dialog box.
  - As the destination printer, choose [Canon SELPHY CP1500].

## 8. Choose printing options.

- Specify the paper size, orientation, and number of copies.
- Choose one of these paper sizes.

Paper Size Description	Paper Size
L Size	89×119 mm
P Size	Postcard
C Size	54×86 mm

## 9. Print.

- Click [**Print**] to print.
- To print other images, repeat steps 7–9.

### Caution

- Avoid sleep or standby mode on your computer while SELPHY is connected via USB. If the computer enters sleep mode with SELPHY connected via USB, wake the computer without disconnecting the USB cable. If recovery fails, restart the computer.

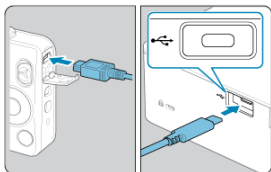
## Printing from a Camera

---

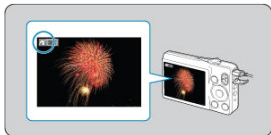
By connecting a PictBridge (USB) compatible camera, you can choose images with the camera and print.


---

1. Use the USB cable to connect SELPHY to the camera.



2. Turn on SELPHY and then the camera, and enter Playback mode.



- A  icon may be displayed, depending on the camera.

3. On the camera, choose images and prepare to print.

- Use the camera to start printing.
- After printing, turn off SELPHY and the camera and disconnect the USB cable.

## Configuring Settings

---

This chapter describes the [**Setup**] and [**Wi-Fi settings**] items on the Home screen.

- [Print Settings](#)
- [Printer Setup](#)
- [Other Wi-Fi Settings](#)



## Print Settings

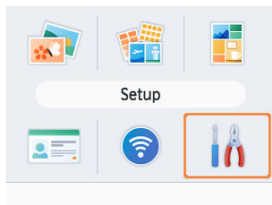
---

- [Print Finish](#)
- [Borders](#)
- [Page Layout](#)
- [Background](#)
- [Image Optimize](#)
- [Brightness](#)
- [Color Adjustment](#)
- [Filter](#)
- [Smooth Skin](#)
- [Correct Red-Eye](#)
- [Date](#)
- [File Number](#)
- [Print Dots to Prevent Re-use](#)

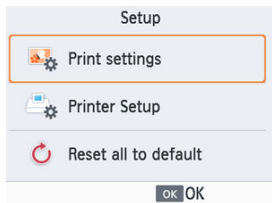
Several print settings for printing from memory cards or USB flash drives can be changed. Settings apply to all relevant printing, so there is no need to complete the settings for each image. Note that default settings are restored after you turn off SELPHY. Depending on the type of image or the application used, it may not be possible to configure some features.

---

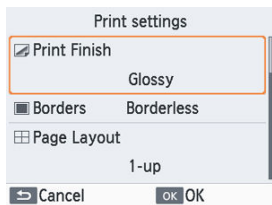
1. Choose [Setup] and press <OK>.



2. Choose [Print settings] and press <OK>.

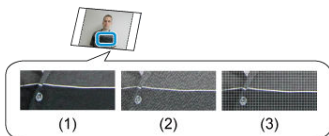


3. Choose an item to change and press <OK>.



- Print settings can also be shown on the [Preview] screen. (Settings unavailable for the current printing feature are grayed-out and cannot be adjusted.)

## Print Finish



- By adding a subtle texture to the surface of prints, you can create a less glossy finish.


(1)	Glossy (default)	Prints with a glossy surface finish.
(2)	Semi-gloss	Applies a fine surface pattern, for a less glossy finish.
(3)	Satin	Applies a fine grid-like surface pattern, for a less glossy finish.

## Borders

- Print images with or without a border.
- Choosing **[Bordered]** enables you to print the entire image.
- Borderless (default) / Bordered

## Page Layout



- Choose the number of images per sheet.
- For Color Ink/Label Set KC-18IL (8 Labels per Page, ) , choose **[8-up]**.

1-up (default)	Prints one image per sheet.
2-up	Prints two images per sheet.
4-up	Prints four images per sheet.
8-up	Prints eight images per sheet.

## Background

- Specify the color around images.
- The effect of this setting is shown on the **[Preview]** screen, in the layout illustration in the upper left.
- White (default) / Black

## Image Optimize

---

- Automatically corrects brightness and contrast to suit each image.
- On (default) / Off

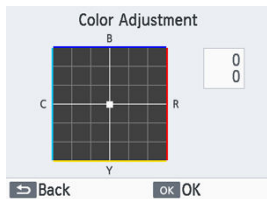
## Brightness

---

- Adjust image brightness in a range of  $-3$  to  $+3$ .
- Choose larger positive values to make images brighter, or larger negative values to make them darker.

## Color Adjustment

---



- Adjust the level of red, blue, cyan, and yellow (R/B/C/Y) in a range of  $0-3$ . Increasing the level of R, for example, decreases the level of C (the complementary color).
- Press  $\langle \wedge \rangle \langle \vee \rangle \langle \leftarrow \rangle \langle \rightarrow \rangle$  to select a value, and then press  $\langle \text{OK} \rangle$  to confirm your choice.

## Filter

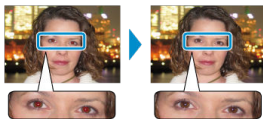
- Choose special color tones to make prints look distinctive, or choose sepia or black-and-white prints.

Off (default)	—
Vivid	Images are vivid, with greater contrast and color saturation.
Neutral	Images are subdued, with less contrast and color saturation.
PositiveFilm	Images have a vibrant, natural appearance, as produced with positive film.
Sepia	Produces sepia-tone prints.
B/W	Produces black-and-white prints.

## Smooth Skin

- Make skin appear smooth and beautiful.
- Off (default) / On

## Correct Red-Eye



- Correct images affected by red-eye.
- Off (default) / On

## Date

---

- Add camera shooting dates when you print.
- **[Subtle]** makes the lettering imperceptible when viewed directly but visible at an angle.
- Off (default) / Prominent / Subtle

### ! Caution

- To avoid having two instances of the date for images already labeled by the camera, select **[Off]**.

## File Number

---

- Images can be printed with their file number.
- **[Subtle]** makes the lettering imperceptible when viewed directly but visible at an angle.
- Off (default) / Prominent / Subtle

## Print Dots to Prevent Re-use

---

- Prints dots in the margin to prevent accidental reuse of paper.
- On (default) / Off

### ! Caution

- Never reuse paper for printing, even if most of the sheet is blank. This may damage the printer or cause malfunction.

# Printer Setup

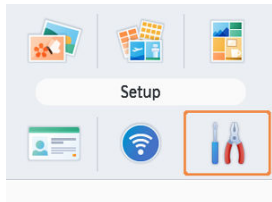
---

- [Manual/Software URL](#)
- [ID Photo Priority](#)
- [Keep Print Settings](#)
- [Date Format](#)
- [Power Saving](#)
- [Language](#)

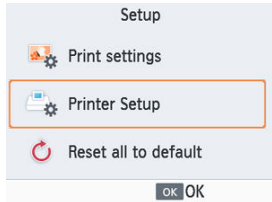
Several settings that control SELPHY operation can also be changed. The setting is retained even when SELPHY is turned off or memory cards are removed.

---

1. Choose [Setup] and press < OK >.

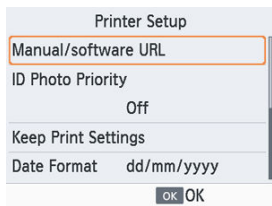


2. Choose [Printer Setup] and press < OK >.





### 3. Choose an item to change and press <OK>.



## Manual/Software URL

To download an instruction manual, scan the displayed QR code with a smartphone.

## ID Photo Priority

- Displays the ID Photo Settings screen (🔗) automatically after SELPHY is turned on, when a memory card is inserted, and after printing.
- When this setting is set to [Off], the [Select & Print] screen (🔗) is displayed instead.
- Off (default) / On

## Keep Print Settings

- Retain print settings (🔗) even after the printer is turned off.
- Can be set separately for each print setting.
- Off (default) / On

## Date Format

---

- When adding the date (📅), adjust the date format as needed.
- yyyy/mm/dd / mm/dd/yyyy / dd/mm/yyyy (default)

## Power Saving

---

- SELPHY turns off automatically if left idle for about five minutes.
- On (default) / Off



### Note

- SELPHY does not turn off automatically in these cases.
  - When a different device is connected
  - When Wi-Fi is enabled
  - When an error message is displayed
  - When SELPHY Photo Layout is connected to SELPHY, after installation on a smartphone as described in [Using SELPHY Photo Layout](#)

## Language

---

- Change the language of menus and messages (🌐).

## Other Wi-Fi Settings

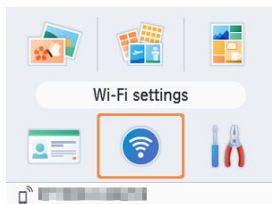
---

- [Wi-Fi](#)
- [Confirm Settings](#)
- [Other Settings](#)
- [Reset Settings](#)
- [Entering Information](#)

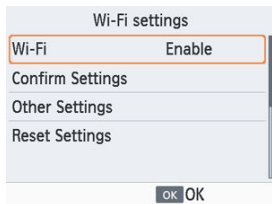
Besides setting up printing via Wi-Fi from **[Wi-Fi settings]** on the Home screen, you can also check setting information and reset Wi-Fi settings.

---

1. Choose **[Wi-Fi settings]** and press **< OK >**.



2. Choose an item to change and press **< OK >**.



## Wi-Fi

---

To disable Wi-Fi connections, select **[Disable]**.

## Confirm Settings

---

Enables you to check the printer name, IP address, and other details.

## Other Settings

---

- **[Set Printer Name]** enables you to rename the printer. Press **<MENU>** to access the input screen, and then enter a new printer name (🔍).
- Select **[IPv4/IPv6 Settings]** ▶ **[IPv4]** to enter the IP address and subnet mask for IPv4 manually.
- Select **[IPv4/IPv6 Settings]** ▶ **[IPv6]** to enable or disable the IPv6 address.
- Set the type of security in **[Security settings]**.

### ⚠ Caution

- **[IPv6]** is not available with **[Direct Connection]**.
- **[Security settings]** can be configured when **[Direct Connection]** is used or when SELPHY is connected to SELPHY Photo Layout.
- Connection may not be possible with **[Security settings]** set to **[WPA3]**, depending on the smartphone OS, software version, or other factors. In that case, set it to **[WPA2]**.

## Reset Settings

---

Enables you to reset Wi-Fi settings such as the printer name, router information, and password.

## Entering Information

When entering a printer name, password, or other information, press < MENU > to access the input screen.



### Entering information

- Press < ^ > < v > < < > > to select a letter, number, or symbol, and then press < OK >. To enter a space, select [Space], and then press < OK >.

### Deleting information

- Press < ^ > < v > < < > > to select [x], and then press < OK >.

### Switching input modes

- To switch from uppercase to lowercase letters and then symbols, press < MENU > repeatedly.

### Returning to the previous screen

- To confirm input and return to the previous screen, press < ^ > < v > < < > > to select [Finish], and then press < OK >.
- To cancel input and return to the previous screen, press < ↶ >.

## Reference







---

This chapter answers frequently asked questions and provides technical information about SELPHY.

- [Troubleshooting](#)
- [Printing Without a Power Outlet](#)
- [Storing Prints](#)
- [After Printing](#)
- [Specifications](#)
- [Trademarks and Licensing](#)

# Troubleshooting




---

-  [Power](#)
-  [Screen](#)
-  [Printing](#)
-  [Paper](#)
-  [Wi-Fi](#)
-  [Error messages](#)

## Power

### Cannot turn on SELPHY

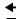



---

- Confirm that the power cord is connected and plugged in correctly ().
- Hold down <  > until the startup screen is displayed (.
- When using a battery pack, confirm that it is charged and inserted correctly.

## Screen

### Image selection screen is not displayed

---

- With the ID Photo settings screen displayed, press <  > to display the Home screen, press <  > or <  > to choose **[Select & Print]**, and then press <  >.

### Cannot print

---

- Confirm that SELPHY is on (🔗).
- Confirm that the paper and ink cassettes are loaded correctly (🔗, 🔗).
- Confirm that the ink sheet is not loose (🔗).
- Confirm that you are using paper designed especially for SELPHY (🔗).
- Replace the ink cassette and refill the paper cassette as needed (🔗, 🔗).
- Confirm that you are using the correct combination of paper, paper cassette, and ink cassette (🔗).

### Cannot display or print images on memory cards or USB flash drives

---

- Confirm that the memory card is fully inserted in the correct slot, with the label face-up (🔗, 🔗).
- Confirm that the USB flash drive is fully inserted in the correct port (🔗).
- Confirm that the image format is supported (🔗).
- Confirm that a memory card requiring an adapter has not been inserted without the adapter (🔗).
- Check the formats supported for USB flash drives (🔗).

### Cannot print from a camera

---

- Confirm that your camera supports PictBridge (🔗, 🔗).
- When printing via USB, confirm that SELPHY is connected directly to the camera with the USB cable (🔗).
- Confirm that your camera batteries have enough charge left. If the batteries are depleted, replace them with fully charged or new ones.
- Remove any memory cards or USB flash drives from SELPHY.



## Cannot print from a computer

---

- Confirm that you have installed the printer driver correctly (🔗).
- Remove any inserted memory cards or USB flash drives.
- When printing via Wi-Fi, confirm that both SELPHY and the computer are correctly connected to the router (🔗).
- When printing via USB, confirm that SELPHY is connected directly to the computer with the USB cable (🔗, 🔗). The printer may not work correctly if it is connected to a computer via a USB hub.
- Windows: Confirm that the printer is not offline. If so, right-click the printer icon and bring the printer online.
- Windows: Use the latest version that is compatible with Mopria.

## Date/file number missing when printing from memory cards or USB flash drives

---

- Confirm that SELPHY is set up to print the date or file number (🔗, 🔗). Note that dimmed settings on the [Print settings] screen are not available. Note that in DPOF printing, date/file number printing is configured on the camera.

## Date/file number missing when printing from cameras

---

- Confirm that adding the date/file number is enabled on the camera. Note that under standard camera settings, the date/file number setting on SELPHY is used.

## Print quality is poor

---

- Confirm that the ink sheet and paper are free of dirt or dust.
- Confirm that the inside of SELPHY is free of dust (🔗).
- Confirm that no condensation has formed on SELPHY (🔗).
- Confirm that SELPHY is away from sources of electromagnetic waves or strong magnetic fields.

## Printed colors do not match the colors displayed

---

- Color is produced in different ways by printers and display devices. Colors may also look different depending on the intensity and color temperature of lighting in the monitor viewing environment, as well as monitor color calibration.

## Individual images are printed reduced, in only one layout position

---

- Change the **[Page Layout]** setting (🔗). When a layout in **[Page Layout]** other than **[1-up]** is selected, individual images are printed in one layout position per sheet if you print from a camera or other device that can only send one image at a time.

## Printing takes too long

---

- SELPHY will temporarily halt printing if it exceeds a specific temperature; this does not indicate a problem. Wait until the printer cools off. Printing continuously, using SELPHY in hot environments, or causing it to become hot inside (by accidentally blocking the air vents on back, for example (🔗)) may cause printing to stop temporarily, which delays printing.
- Printing may take some time, depending on the printing environment. If so, try printing a different way—from a memory card, via Wi-Fi, or via USB.

## Cannot cancel printing

---

- It may not be possible to cancel printing in progress by using < ⏪ > on SELPHY if you are printing from a smartphone, camera, or computer. If [⏪] is not displayed on SELPHY, use the device you are printing from to stop printing.

### Paper does not fit in the cassette

---

- Confirm that the paper is the same size as the paper cassette (📏).

### Paper feed problems or frequent paper jams occur

---

- Confirm that the paper and cassette are inserted correctly (📏, 📏).
- Confirm that there are less than 19 sheets in the cassette.
- Confirm that 19 or more prints have not collected on the paper cassette.
- Confirm that you are using paper designed especially for SELPHY (📏).
- Make sure you are not using paper that has already been used for printing, such as paper that has blank areas.

### Cannot print the correct quantity (unused paper left after ink runs out)

---

- Some unused paper may remain if the ink runs out first.
- Confirm that there is still ink left.

### Paper jams

---

- If paper protrudes from the front or back paper ejection slot (📏), carefully pull it out. If you cannot remove the paper by gently pulling it out, never force it out. Turn the printer off and then on. Repeat until the paper is ejected. If you accidentally turn the printer off while printing, restart it and wait until the paper is ejected. If paper jams and cannot be removed, contact your retailer or a Customer Support Help Desk. Do not attempt to remove jammed paper by force, which may damage the printer.

Do not use the printer near sources of Wi-Fi signal interference, such as microwave ovens, Bluetooth devices, or other equipment operating on the 2.4 GHz band.

### Printer network name (SSID) is not displayed when connecting to a camera or smartphone

---

- As the connection method, choose **[Direct Connection]** (🔗, 🔗).
- Keep the printer near the camera or smartphone, without objects between them.

### Router is not displayed on SELPHY Cannot connect SELPHY to the router

---

- As the connection method, choose **[Via Wireless Router]** (🔗).
- Confirm that the router is on and ready for communication. For instructions on how to check, refer to the router user manual.
- If there are many routers but the required one is not listed, connect by using **[WPS Connection]** (🔗) or by selecting **[Manually]** in **[Via Wireless Router]** (🔗).
- Keep SELPHY near the router, without objects between them.
- Confirm that the password is correct, and try connecting again.
- Confirm that the router channel is set in a range of 1–11. Instead of auto channel assignment, it is advisable to specify a channel in this range manually. For instructions on checking or adjusting the settings, refer to the router user manual.
- If the router filters communication by MAC or IP addresses, on the router, register the information about SELPHY shown when you check the settings in **[Confirm Settings]** (🔗). For instructions on checking or adjusting the settings, refer to the router user manual.
- In WEP networks without DHCP, set the IP address manually (🔗).

### Cannot connect via Wi-Fi

---

- SELPHY cannot communicate on the 5 GHz band. Enable use of the 2.4 GHz band in the settings of your router.
- Try restarting SELPHY. If a connection still cannot be established, check the settings of the wireless router or other device for the Wi-Fi connection.
- If connection is not possible with **[WPS Connection]**, try connecting by using **[Find wireless routers]** (🔗) or by selecting **[Manually]** in **[Via Wireless Router]** (🔗).

## Can connect to router, but cannot print

---

- Remove any inserted memory cards or USB flash drives.
- Printing is not possible when the printer is already printing a job from another device, or when the printer is connected to a camera.
- Confirm that the camera, smartphone, or computer you are printing from is connected to the same router as SELPHY.
- Check the router password and try to connect again (🔗).
- If a message is displayed after you enter the correct password and press <OK> (🔗), confirm that DHCP server functionality is enabled on the router, and make sure connection settings on SELPHY such as the IP address are correct (🔗).
- Check the router settings to confirm that communication between the devices is allowed.

## Printing takes too long, or the Wi-Fi connection is lost

---

- Do not use the printer near sources of Wi-Fi signal interference, such as microwave ovens, Bluetooth devices, or other equipment operating on the 2.4 GHz band. Note that even when [📶] or [📶] is displayed, image transmission may take some time.
- **[Direct Connection]** (🔗, 🔗): Keep SELPHY near the camera or smartphone, without objects in between.
- **[Via Wireless Router]** (🔗): Keep SELPHY near the router, without objects in between.

## Cannot connect via Wi-Fi from the computer

---

- In Windows, enable [Network Discovery].
- In macOS, add SELPHY as a printer for the computer (🔗).

## Message displayed when connecting a camera or smartphone

---

- Up to 8 devices can be connected at once using **[Direct Connection]**, and IP addresses can be allocated to up to 32 devices. Attempting to connect more than 8 devices will display a message. In this case, use one of the connected devices to disconnect from the printer, press <OK> on SELPHY to clear the message, and then use the device for the new connection to connect to SELPHY. If disconnection is not possible using a connected device, turn off the printer momentarily to disconnect all devices, and then turn the printer on again.

## Error messages

Error messages indicate problems with SELPHY. When error messages include troubleshooting tips, follow the instructions. If only an error message is displayed, follow the suggestions in “Troubleshooting” ([🔗](#)).

If the problem persists, contact a Customer Support Help Desk.



### Note

- If a problem occurs while SELPHY is connected to another device, an error message may also be displayed on the device. Check both SELPHY and the device.

## Printing Without a Power Outlet

---

To print where no power outlet is available, use Battery Pack NB-CP2LI (sold separately). A fully charged battery pack provides enough power to print up to about 100 sheets of L-size paper.\*

\* According to Canon testing. May vary depending on printing conditions.

---

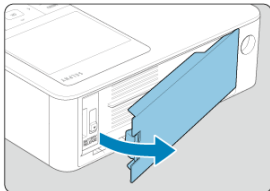
[Attaching the Battery Pack](#)

[Charging the Battery Pack Before Use](#)

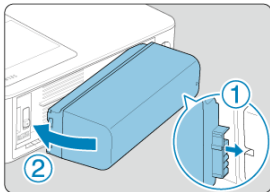
### Attaching the Battery Pack

---

1. Remove the battery pack mounting cover.



2. Insert the battery pack.



- Slide the terminal-end in the direction of the arrow (①) and insert the other end (②) until it clicks into place.

 **Caution**




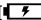

- To avoid unexpected accidents or malfunctioning if SELPHY is carried with a battery attached, remove the battery before carrying SELPHY.

 **Note**

- Battery Pack NB-CP2LH (sold separately) is also supported. A fully charged battery pack provides enough power to print up to about 70 sheets of L-size paper.\*  
\* According to Canon testing. May vary depending on printing conditions.

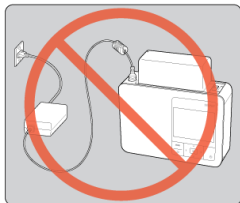


## Charging the Battery Pack Before Use


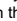

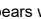


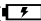
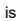
- With the battery attached and the compact power adapter connected, turning SELPHY off starts charging, and [  ] blinks on the screen.
- Fully charging NB-CP2LI takes about 4 hours (at normal temperatures), after which [  ] is no longer displayed.
- SELPHY can also be turned on (  ) and used while [  ] is blinking. However, charging stops. When SELPHY is turned off, [  ] starts blinking again and charging resumes.

### Caution

- Keep SELPHY horizontal during charging. Charging may take longer if SELPHY is upright during charging.

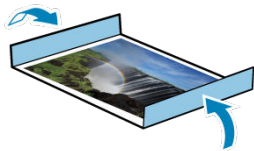


### Note

- For battery precautions, refer to the battery user manual.
- When [  ] is displayed, before charging, make sure SELPHY is in an environment at within the operating temperature range (  ) and has adjusted to the ambient temperature.
- Response when [  ] is displayed
  - Unplug SELPHY, remove the battery, wait a while, and then charge it in a horizontal position.
  - If [  ] appears while SELPHY is horizontal, the battery may have reached the end of its useful life. Purchase a new battery pack.
- [  ] display can be cleared by holding down a button other than <  > for at least 3 seconds. [  ] is displayed for about 10 seconds if you press a button other than <  > while the screen is off and the battery is charging.

## Storing Prints

---



- To remove any extra paper from the edges of a print, fold the paper along the perforations and tear the edges off.
- When writing on prints, use an oil-based pen.
- To prevent discoloration, do not store prints where temperatures exceed 40°C (104°F), in humid or dusty places, or in direct sunlight.
- Also avoid the following actions, which may cause discoloration, fading, or bleeding: sticking tape on the printed surface, allowing the printed surface to contact vinyl or plastic, applying alcohol or volatile solvents to the printed surface, or leaving the printed surface pressed firmly against other surfaces or objects over extended periods.
- When storing prints in an album, choose an album with photo covers made of nylon, polypropylene, or cellophane.

### Caution

- Color may change over time or depending on storage conditions. Canon cannot be held liable for discoloration.

## After Printing

---

1. Turn off SELPHY (🔌) and remove any memory cards or USB flash drives.
2. Unplug the power cord from the outlet and disconnect the adapter plug from SELPHY.
  - If the compact power adapter is still warm, wait for it to cool down before putting it away.
  - If a battery is attached, remove it.
3. Remove the paper cassette and close the paper cassette compartment cover. Leave any remaining paper in the cassette, close the outer cover, and store the cassette in a dark, cool, and dry place away from dust.
  - Leave the ink cassette in SELPHY.
  - Keep SELPHY horizontal, away from sunlight and dust. Any dust that gets inside SELPHY may cause white banding on photos or damage the printer.

### Caution

- Store any extra ink cassettes in the original package or a bag, away from sunlight and dust.
- Store any unused paper or ink cassettes in their unopened packages, away from sunlight.

# Specifications

---

- [Printing Method](#)
- [Color Ink / Paper Set](#)
- [Printing Speed](#)
- [Monitor](#)
- [External Interface](#)
- [Power Source](#)
- [Dimensions and Weight](#)
- [Operating Environment](#)
- [Wi-Fi](#)

## Printing Method

---

### Printing method

Dye-sublimation thermal transfer

### Printing resolution

300×300 dpi

### Gradation

256 shades per color

### Color ink

Yellow, magenta, cyan

\* With overcoating

### Paper size

#### Postcard size

Paper specifications	Paper size	
	Before separated at perforations	After separated at perforations
Photo paper	100.0×177.0 mm (3.94×6.97 in.)	100.0×148.0 mm (3.94×5.83 in.)

#### L size

Paper specifications	Paper size	
	Before separated at perforations	After separated at perforations
Photo paper	89.0×148.0 mm (3.50×5.83 in.)	89.0×119.0 mm (3.50×4.69 in.)

#### Card size

Paper specifications	Paper size		Label sheet size
	Before separated at perforations	After separated at perforations	
Photo paper	83.0×86.0 mm (3.27×3.39 in.)	54.0×86.0 mm (2.13×3.39 in.)	
Full-size label * Entire surface is a label			54.0×86.0 mm (2.13×3.39 in.)
Label * 8-label sheet			22.0×17.3 mm (0.87×0.68 in.)
Square label			54.0×54.0 mm (2.13×2.13 in.)

## Printing Speed

---

(Approx. time, in sec.)

Print finish	Postcard size	L size	Card size
Glossy	41	35	23
Semi-gloss/Satin	56	47	30

\* Measurement conditions: Room temperature, from the initial yellow printing pass until ejection

## Monitor

---

### Type

TFT LCD color monitor

### Screen size

3.5-inch (aspect ratio of 3:2)

### Card slot

#### Insertion

Direct insertion	SD, SDHC, SDXC memory cards
With adapter	miniSD, miniSDHC, microSD, microSDHC, microSDXC memory cards

\* UHS-II is not supported.

#### Applications

Printing from memory cards

### Digital terminal

#### Terminal type

USB Type-C

#### Transmission

USB 2.0

#### Applications / connection method

Applications	Connection method	
For computer communication	IFC-100U * Commercially available USB cables should not exceed 2.5 m (8.2 ft.)	
For printing from USB flash drives	USB flash drives	FAT / exFAT format only
USB charging/power supply	Not provided	



## Power Source

### External power source

Compact Power Adapter CA-CP300 B

### Battery pack

NB-CP2LI, NB-CP2LH

### Power consumption

Printing	60 W or less
Standby	4 W or less

### Compact Power Adapter CA-CP300 B

Rated input	100–240 V AC (50/60 Hz), 0.88 A (100 V)–0.43 A (240 V)
Rated output	24 V DC, 1.8 A
Operating temperature	0–40°C (32–104°F)

### Battery Pack NB-CP2LH (sold separately)

Type	Rechargeable lithium-ion battery
Nominal voltage	22.2 V DC
Nominal capacity	1290 mAh
Charging cycles	Approx. 300 times
Operating temperature	5–40°C (41–104°F)

### Battery Pack NB-CP2LI (sold separately)

Type	Rechargeable lithium-ion battery
Nominal voltage	21.6 V DC
Nominal capacity	1900 mAh
Charging cycles	Approx. 300 times
Operating temperature	5–40°C (41–104°F)

## Dimensions and Weight

---

### Dimensions

Width × Height × Depth	182.2×57.6×133.0 mm (7.17×2.27×5.24 in.)
------------------------	--

\* Including rubber soles

### Weight

Approx. 850 g (Approx. 29.98 oz.)

\* Printer body only

## Operating Environment

---

### **Operating temperature**

5–40°C (41–104°F)

### **Operating humidity**

20–80%

## Specifications

Conforms to IEEE 802.11b/g

## Frequency

2.4 GHz band

## Channels

1 to 11 ch

## Communication modes

Communication mode		Simultaneous connections	Security protocol
Connection via Wi-Fi router	Access point connections * Wi-Fi Protected Setup supported.		<ul style="list-style-type: none"> <li>• WEP*</li> <li>• WPA-PSK (TKIP/AES)</li> <li>• WPA2-PSK (TKIP/AES)</li> <li>• WPA3-SAE (AES)*</li> <li>• None</li> </ul> <p>* Not supported when connected via Wi-Fi Protected Setup</p>
Direct connection	Printer serves as a basic access point for device connections * Internet connection may not be available for some smartphones.	8	<ul style="list-style-type: none"> <li>• WPA2-PSK (AES)</li> <li>• WPA3-SAE (AES)*</li> <li>• None</li> </ul> <p>* Even with a smartphone that supports WPA3-SAE, connection may not be established depending on the OS version or using environment</p>
Connect with SELPHY Photo Layout	Printer serves as a basic access point for connections to SELPHY Photo Layout	1	<ul style="list-style-type: none"> <li>• WPA2-PSK (AES)</li> <li>• WPA3-SAE (AES)*</li> </ul> <p>* Even with a smartphone that supports WPA3-SAE, connection may not be established depending on the OS version or using environment</p>

## Trademarks and Licensing

---

- Microsoft and Windows are trademarks or registered trademarks of Microsoft Corporation in the United States and/or other countries.
- App Store and macOS are trademarks of Apple Inc., registered in the U.S. and other countries.
- iPhone, iPad and AirPrint are trademarks of Apple Inc.
- The SDXC, miniSDHC logos are trademarks of SD-3C, LLC.
- Wi-Fi®, Wi-Fi Alliance®, WPA™, WPA2™, WPA3™ and Wi-Fi Protected Setup™ are trademarks or registered trademarks of the Wi-Fi Alliance.
- Android is a trademark of Google LLC.
- IOS is a trademark or registered trademark of Cisco in the U.S. and other countries and is used under license.
- All other trademarks are the property of their respective owners.
- This device incorporates exFAT technology licensed from Microsoft.
- Portions of the code used in this firmware are based in part on the work of the Independent JPEG Group.
- Use of the Works with Apple badge means that an accessory has been designed to work specifically with the technology identified in the badge and has been certified by the developer to meet Apple performance standards.
- The Mopria® word mark and the Mopria® Logo are registered and/or unregistered trademarks of Mopria Alliance, Inc. in the United States and other countries. Unauthorized use is strictly prohibited.

### cURL

Curl and libcurl are true Open Source/Free Software and meet all definitions as such. It means that you are free to modify and redistribute all contents of the curl distributed archives. You may also freely use curl and libcurl in your commercial projects.

Curl and libcurl are licensed under a MIT/X derivate license, see below.

There are other computer-related projects using the name curl as well. For details, check out our position on the curl name issue.

The curl license

COPYRIGHT AND PERMISSION NOTICE

Copyright (c) 1996 - 2014, Daniel Stenberg, <daniel@haxx.se>.

All rights reserved.

Permission to use, copy, modify, and distribute this software for any purpose with or without fee is hereby granted, provided that the above copyright notice and this permission notice appear in all copies.

THE SOFTWARE IS PROVIDED "AS IS", WITHOUT WARRANTY OF ANY KIND, EXPRESS OR IMPLIED, INCLUDING BUT NOT LIMITED TO THE WARRANTIES OF MERCHANTABILITY, FITNESS FOR A PARTICULAR PURPOSE AND NONINFRINGEMENT OF THIRD PARTY RIGHTS. IN NO EVENT SHALL THE AUTHORS OR COPYRIGHT HOLDERS BE LIABLE FOR ANY CLAIM, DAMAGES OR OTHER LIABILITY, WHETHER IN AN ACTION OF CONTRACT, TORT OR OTHERWISE, ARISING FROM, OUT OF OR IN CONNECTION WITH THE SOFTWARE OR THE USE OR OTHER DEALINGS IN THE SOFTWARE.

Except as contained in this notice, the name of a copyright holder shall not be used in advertising or otherwise to promote the sale, use or other dealings in this Software without prior written authorization of the copyright holder.

### snprintf

You can get the Standard Version from [https://www.ijs.si/software/snprintf/\(snprintf\\_2.2.tar.gz\)](https://www.ijs.si/software/snprintf/(snprintf_2.2.tar.gz)).

Copyright 1999, Mark Martinec. All rights reserved.

This program is free software; you can redistribute it and/or modify it under the terms of the "Frontier Artistic License" which comes with this Kit.

The Frontier Artistic License Version 1.0

Derived from the Artistic License at OpenSource.org.

Submitted to OpenSource.org for Open Source Initiative certification.

### Preamble

The intent of this document is to state the conditions under which a Package may be copied, such that the Copyright Holder maintains some semblance of artistic control over the development of the package, while giving the users of the package the right to use and distribute the Package in a more-or-less customary fashion, plus the right to make reasonable modifications.

## Definitions

"Package" refers to the script, suite, file, or collection of scripts, suites, and/or files distributed by the Copyright Holder, and to derivatives of that Package created through textual modification.

"Standard Version" refers to such a Package if it has not been modified, or has been modified in accordance with the wishes of the Copyright Holder.

"Copyright Holder" is whoever is named in the copyright statement or statements for the package.

"You" is you, if you're thinking about copying or distributing this Package.

"Reasonable copying fee" is whatever you can justify on the basis of media cost, duplication charges, time of people involved, and so on. (You will not be required to justify it to the Copyright Holder, but only to the computing community at large as a market that must bear the fee.)

"Freely Available" means that no fee is charged for the item itself, though there may be fees involved in handling the item. It also means that recipients of the item may redistribute it under the same conditions they received it.

## Terms

1. You may make and give away verbatim copies of the source form of the Standard Version of this Package without restriction, provided that you duplicate all of the original copyright notices and associated disclaimers.
2. You may apply bug fixes, portability fixes, and other modifications derived from the Public Domain or from the Copyright Holder. A Package modified in such a way shall still be considered the Standard Version.
3. You may otherwise modify your copy of this Package in any way, provided that you insert a prominent notice in each changed script, suite, or file stating how and when you changed that script, suite, or file, and provided that you do at least ONE of the following:
  - a) Use the modified Package only within your corporation or organization, or retain the modified Package solely for personal use.
  - b) Place your modifications in the Public Domain or otherwise make them Freely Available, such as by posting said modifications to Usenet or an equivalent medium, or placing the modifications on a major archive site such as ftp.uu.net, or by allowing the Copyright Holder to include your modifications in the Standard Version of the Package.
  - c) Rename any non-standard executables so the names do not conflict with standard executables, which must also be provided, and provide a separate manual page (or equivalent) for each non-standard executable that clearly documents how it differs from the Standard Version.
  - d) Make other distribution arrangements with the Copyright Holder.
4. You may distribute the programs of this Package in object code or executable form, provided that you do at least ONE of the following:
  - a) Distribute a Standard Version of the executables and library files, together with instructions (in the manual page or equivalent) on where to get the Standard Version.
  - b) Accompany the distribution with the machine-readable source of the Package with your modifications.

- c) Accompany any non-standard executables with their corresponding Standard Version executables, give the non-standard executables non-standard names, and clearly document the differences in manual pages (or equivalent), together with instructions on where to get the Standard Version.
- d) Make other distribution arrangements with the Copyright Holder.

5. You may charge a reasonable copying fee for any distribution of this Package. You may charge any fee you choose for support of this Package. You may not charge a fee for this Package itself. However, you may distribute this Package in aggregate with other (possibly commercial) programs as part of a larger (possibly commercial) software distribution provided that you do not advertise this Package as a product of your own.
6. The scripts and library files supplied as input to or produced as output from the programs of this Package do not automatically fall under the copyright of this Package, but belong to whomever generated them, and may be sold commercially, and may be aggregated with this Package.
7. Scripts, suites, or programs supplied by you that depend on or otherwise make use of this Package shall not be considered part of this Package.
8. The name of the Copyright Holder may not be used to endorse or promote products derived from this software without specific prior written permission.
9. THIS PACKAGE IS PROVIDED "AS IS" AND WITHOUT ANY EXPRESS OR IMPLIED WARRANTIES, INCLUDING, WITHOUT LIMITATION, THE IMPLIED WARRANTIES OF MERCHANTABILITY AND FITNESS FOR A PARTICULAR PURPOSE.

The End

<http://www.spinwardstars.com/frontier/fal.html>

## **wpa\_suppliant**

Copyright (c) 2003-2019, Jouni Malinen <j@w1.fi> and contributors  
All Rights Reserved.

This program is licensed under the BSD license (the one with advertisement clause removed).

If you are submitting changes to the project, please see CONTRIBUTIONS file for more instructions.

### **License**

This software may be distributed, used, and modified under the terms of BSD license: Redistribution and use in source and binary forms, with or without modification, are permitted provided that the following conditions are met:

1. Redistributions of source code must retain the above copyright notice, this list of conditions and the following disclaimer.
2. Redistributions in binary form must reproduce the above copyright notice, this list of conditions and the following disclaimer in the documentation and/or other materials provided with the distribution.
3. Neither the name(s) of the above-listed copyright holder(s) nor the names of its contributors may be used to endorse or promote products derived from this software without specific prior written permission.



THIS SOFTWARE IS PROVIDED BY THE COPYRIGHT HOLDERS AND CONTRIBUTORS "AS IS" AND ANY EXPRESS OR IMPLIED WARRANTIES, INCLUDING, BUT NOT LIMITED TO, THE IMPLIED WARRANTIES OF MERCHANTABILITY AND FITNESS FOR A PARTICULAR PURPOSE ARE DISCLAIMED. IN NO EVENT SHALL THE COPYRIGHT OWNER OR CONTRIBUTORS BE LIABLE FOR ANY DIRECT, INDIRECT, INCIDENTAL, SPECIAL, EXEMPLARY, OR CONSEQUENTIAL DAMAGES (INCLUDING, BUT NOT LIMITED TO, PROCUREMENT OF SUBSTITUTE GOODS OR SERVICES; LOSS OF USE, DATA, OR PROFITS; OR BUSINESS INTERRUPTION) HOWEVER CAUSED AND ON ANY THEORY OF LIABILITY, WHETHER IN CONTRACT, STRICT LIABILITY, OR TORT (INCLUDING NEGLIGENCE OR OTHERWISE) ARISING IN ANY WAY OUT OF THE USE OF THIS SOFTWARE, EVEN IF ADVISED OF THE POSSIBILITY OF SUCH DAMAGE.

## hostapd

Copyright (c) 2002-2019, Jouni Malinen <j@w1.fi> and contributors  
All Rights Reserved.

These programs are licensed under the BSD license (the one with advertisement clause removed).

If you are submitting changes to the project, please see CONTRIBUTIONS file for more instructions.

This package may include either wpa\_supplicant, hostapd, or both. See README file respective subdirectories (wpa\_supplicant/README or hostapd/README) for more details. Source code files were moved around in v0.6.x releases and compared to earlier releases, the programs are now built by first going to a subdirectory (wpa\_supplicant or hostapd) and creating build configuration (.config) and running 'make' there (for Linux/BSD/cygwin builds).

## License

This software may be distributed, used, and modified under the terms of BSD license: Redistribution and use in source and binary forms, with or without modification, are permitted provided that the following conditions are met:

1. Redistributions of source code must retain the above copyright notice, this list of conditions and the following disclaimer.
2. Redistributions in binary form must reproduce the above copyright notice, this list of conditions and the following disclaimer in the documentation and/or other materials provided with the distribution.
3. Neither the name(s) of the above-listed copyright holder(s) nor the names of its contributors may be used to endorse or promote products derived from this software without specific prior written permission.

THIS SOFTWARE IS PROVIDED BY THE COPYRIGHT HOLDERS AND CONTRIBUTORS "AS IS" AND ANY EXPRESS OR IMPLIED WARRANTIES, INCLUDING, BUT NOT LIMITED TO, THE IMPLIED WARRANTIES OF MERCHANTABILITY AND FITNESS FOR A PARTICULAR PURPOSE ARE DISCLAIMED. IN NO EVENT SHALL THE COPYRIGHT OWNER OR CONTRIBUTORS BE LIABLE FOR ANY DIRECT, INDIRECT, INCIDENTAL, SPECIAL, EXEMPLARY, OR CONSEQUENTIAL DAMAGES (INCLUDING, BUT NOT LIMITED TO, PROCUREMENT OF SUBSTITUTE GOODS OR SERVICES; LOSS OF USE, DATA, OR PROFITS; OR BUSINESS INTERRUPTION) HOWEVER CAUSED AND ON ANY THEORY OF LIABILITY, WHETHER IN CONTRACT, STRICT LIABILITY, OR TORT (INCLUDING NEGLIGENCE OR OTHERWISE) ARISING IN ANY WAY OUT OF THE USE OF THIS SOFTWARE, EVEN IF ADVISED OF THE POSSIBILITY OF SUCH DAMAGE.

## **iperf**

iperf, Copyright (c) 1999,2000,2001,2002,2003,2004,2005 The Board of Trustees of the University of Illinois

All Rights Reserved.

Iperf performance test

Mark Gates

Ajay Tirumala

Jim Ferguson

Jon Dugan

Feng Qin

Kevin Gibbs

John Estabrook

National Laboratory for Applied Network Research

National Center for Supercomputing Applications

University of Illinois at Urbana-Champaign

<http://www.ncsa.uiuc.edu>

Permission is hereby granted, free of charge, to any person obtaining a copy of this software (Iperf) and associated documentation files (the "Software"), to deal in the Software without restriction, including without limitation the rights to use, copy, modify, merge, publish, distribute, sublicense, and/or sell copies of the Software, and to permit persons to whom the Software is furnished to do so, subject to the following conditions:

\* Redistributions of source code must retain the above copyright notice, this list of conditions and the following disclaimers.

\* Redistributions in binary form must reproduce the above copyright notice, this list of conditions and the following disclaimers in the documentation and/or other materials provided with the distribution.

\* Neither the names of the University of Illinois, NCSA, nor the names of its contributors may be used to endorse or promote products derived from this Software without specific prior written permission.

THE SOFTWARE IS PROVIDED "AS IS", WITHOUT WARRANTY OF ANY KIND, EXPRESS OR IMPLIED, INCLUDING BUT NOT LIMITED TO THE WARRANTIES OF MERCHANTABILITY, FITNESS FOR A PARTICULAR PURPOSE AND NONINFRINGEMENT. IN NO EVENT SHALL THE CONTRIBUTORS OR COPYRIGHT HOLDERS BE LIABLE FOR ANY CLAIM, DAMAGES OR OTHER LIABILITY, WHETHER IN AN ACTION OF CONTRACT, TORT OR OTHERWISE, ARISING FROM, OUT OF OR IN CONNECTION WITH THE SOFTWARE OR THE USE OR OTHER DEALINGS IN THE SOFTWARE.

## **libpng**

COPYRIGHT NOTICE, DISCLAIMER, and LICENSE:

If you modify libpng you may insert additional notices immediately following this sentence. This code is released under the libpng license.

libpng versions 1.0.7, July 1, 2000, through 1.4.22, September 28, 2017, are Copyright (c) 2000-2002, 2004, 2006-2017 Glenn Randers-Pehrson, are derived from libpng-1.0.6, and are distributed according to the same disclaimer and license as libpng-1.0.6 with the following individuals added to the list of Contributing Authors:

Simon-Pierre Cadieux

Eric S. Raymond

Cosmin Truta

Gilles Vollant

and with the following additions to the disclaimer:

There is no warranty against interference with your enjoyment of the library or against infringement. There is no warranty that our efforts or the library will fulfill any of your particular purposes or needs. This library is provided with all faults, and the entire risk of satisfactory quality, performance, accuracy, and effort is with the user.

libpng versions 0.97, January 1998, through 1.0.6, March 20, 2000, are Copyright (c) 1998-2000 Glenn Randers-Pehrson, are derived from libpng-0.96, and are distributed according to the same disclaimer and license as libpng-0.96, with the following individuals added to the list of Contributing Authors:

Tom Lane

Glenn Randers-Pehrson

Willem van Schaik

libpng versions 0.89, June 1996, through 0.96, May 1997, are Copyright (c) 1996-1997

Andreas Dilger, are derived from libpng-0.88, and are distributed according to the same disclaimer and license as libpng-0.88, with the following individuals added to the list of Contributing Authors:

John Bowler

Kevin Bracey

Sam Bushell

Magnus Holmgren

Greg Roelofs

Tom Tanner

libpng versions 0.5, May 1995, through 0.88, January 1996, are Copyright (c) 1995-1996

Guy Eric Schalnat, Group 42, Inc.

For the purposes of this copyright and license, "Contributing Authors" is defined as the following set of individuals:

Andreas Dilger

Dave Martindale

Guy Eric Schalnat

Paul Schmidt

Tim Wegner

The PNG Reference Library is supplied "AS IS". The Contributing Authors and Group 42, Inc. disclaim all warranties, expressed or implied, including, without limitation, the warranties of merchantability and of fitness for any purpose. The Contributing Authors and Group 42, Inc. assume no liability for direct, indirect, incidental, special, exemplary, or consequential damages, which may result from the use of the PNG Reference Library, even if advised of the possibility of such damage.

Permission is hereby granted to use, copy, modify, and distribute this source code, or portions hereof, for any purpose, without fee, subject to the following restrictions:

1. The origin of this source code must not be misrepresented.
2. Altered versions must be plainly marked as such and must not be misrepresented as being the original source.
3. This Copyright notice may not be removed or altered from any source or altered source distribution.

The Contributing Authors and Group 42, Inc. specifically permit, without fee, and encourage the use of this source code as a component to supporting the PNG file format in commercial products. If you use this source code in a product, acknowledgment is not required but would be appreciated.

END OF COPYRIGHT NOTICE, DISCLAIMER, and LICENSE.

## queue.h

\$NetBSD: queue.h,v 1.30 2001/06/22 06:18:22 chs Exp \$

Copyright (c) 1991, 1993

The Regents of the University of California. All rights reserved.

Redistribution and use in source and binary forms, with or without modification, are permitted provided that the following conditions are met:

1. Redistributions of source code must retain the above copyright notice, this list of conditions and the following disclaimer.
2. Redistributions in binary form must reproduce the above copyright notice, this list of conditions and the following disclaimer in the documentation and/or other materials provided with the distribution.
3. All advertising materials mentioning features or use of this software must display the following acknowledgement:  
This product includes software developed by the University of California, Berkeley and its contributors.
4. Neither the name of the University nor the names of its contributors may be used to endorse or promote products derived from this software without specific prior written permission.

THIS SOFTWARE IS PROVIDED BY THE REGENTS AND CONTRIBUTORS "AS IS" AND ANY EXPRESS OR IMPLIED WARRANTIES, INCLUDING, BUT NOT LIMITED TO, THE IMPLIED WARRANTIES OF MERCHANTABILITY AND FITNESS FOR A PARTICULAR PURPOSE ARE DISCLAIMED. IN NO EVENT SHALL THE REGENTS OR CONTRIBUTORS BE LIABLE FOR ANY DIRECT, INDIRECT, INCIDENTAL, SPECIAL, EXEMPLARY, OR CONSEQUENTIAL DAMAGES (INCLUDING, BUT NOT LIMITED TO, PROCUREMENT OF SUBSTITUTE GOODS OR SERVICES; LOSS OF USE, DATA, OR PROFITS; OR BUSINESS INTERRUPTION) HOWEVER CAUSED AND ON ANY THEORY OF LIABILITY, WHETHER IN CONTRACT, STRICT LIABILITY, OR TORT (INCLUDING NEGLIGENCE OR OTHERWISE) ARISING IN ANY WAY OUT OF THE USE OF THIS SOFTWARE, EVEN IF ADVISED OF THE POSSIBILITY OF SUCH DAMAGE.

@(#)queue.h 8.5 (Berkeley) 8/20/94

## getopt.h

Copyright (c) 1987, 1993, 1994, 1996

Copyright 2010-2011 embWiSe Technologies

The Regents of the University of California. All rights reserved.

Redistribution and use in source and binary forms, with or without modification, are permitted provided that the following conditions are met:

1. Redistributions of source code must retain the above copyright notice, this list of conditions and the following disclaimer.
2. Redistributions in binary form must reproduce the above copyright notice, this list of conditions and the following disclaimer in the documentation and/or other materials provided with the distribution.
3. All advertising materials mentioning features or use of this software must display the following acknowledgement:  
This product includes software developed by the University of California, Berkeley and its contributors.
4. Neither the name of the University nor the names of its contributors may be used to endorse or promote products derived from this software without specific prior written permission.

THIS SOFTWARE IS PROVIDED BY THE REGENTS AND CONTRIBUTORS "AS IS" AND ANY EXPRESS OR IMPLIED WARRANTIES, INCLUDING, BUT NOT LIMITED TO, THE IMPLIED WARRANTIES OF MERCHANTABILITY AND FITNESS FOR A PARTICULAR PURPOSE ARE DISCLAIMED. IN NO EVENT SHALL THE REGENTS OR CONTRIBUTORS BE LIABLE FOR ANY DIRECT, INDIRECT, INCIDENTAL, SPECIAL, EXEMPLARY, OR CONSEQUENTIAL DAMAGES (INCLUDING, BUT NOT LIMITED TO, PROCUREMENT OF SUBSTITUTE GOODS OR SERVICES; LOSS OF USE, DATA, OR PROFITS; OR BUSINESS INTERRUPTION) HOWEVER CAUSED AND ON ANY THEORY OF LIABILITY, WHETHER IN CONTRACT, STRICT LIABILITY, OR TORT (INCLUDING NEGLIGENCE OR OTHERWISE) ARISING IN ANY WAY OUT OF THE USE OF THIS SOFTWARE, EVEN IF ADVISED OF THE POSSIBILITY OF SUCH DAMAGE.

## getopt\_long.c

\$Id: getopt\_long.c,v 1.1 2003/02/16 17:17:31 neis Exp \$\n\$OpenBSD: getopt\_long.c,v 1.11 2002/12/10 17:51:42 millert Exp \$\n\$NetBSD: getopt\_long.c,v 1.15 2002/01/31 22:43:40 tv Exp \$\nCopyright (c) 2002 Todd C. Miller <Todd.Miller@courtesan.com>\nAll rights reserved.

Copyright 2010-2011 embWiSe Technologies

Redistribution and use in source and binary forms, with or without modification, are permitted provided that the following conditions are met:

1. Redistributions of source code must retain the above copyright notice, this list of conditions and the following disclaimer.
2. Redistributions in binary form must reproduce the above copyright notice, this list of conditions and the following disclaimer in the documentation and/or other materials provided with the distribution.
3. The name of the author may not be used to endorse or promote products derived from this software without specific prior written permission.

THIS SOFTWARE IS PROVIDED "AS IS" AND ANY EXPRESS OR IMPLIED WARRANTIES, INCLUDING, BUT NOT LIMITED TO, THE IMPLIED WARRANTIES OF MERCHANTABILITY AND FITNESS FOR A PARTICULAR PURPOSE ARE DISCLAIMED. IN NO EVENT SHALL THE AUTHOR BE LIABLE FOR ANY DIRECT, INDIRECT, INCIDENTAL, SPECIAL, EXEMPLARY, OR CONSEQUENTIAL DAMAGES (INCLUDING, BUT NOT LIMITED TO, PROCUREMENT OF SUBSTITUTE GOODS OR SERVICES; LOSS OF USE, DATA, OR PROFITS; OR BUSINESS INTERRUPTION) HOWEVER CAUSED AND ON ANY THEORY OF LIABILITY, WHETHER IN CONTRACT, STRICT LIABILITY, OR TORT (INCLUDING NEGLIGENCE OR OTHERWISE) ARISING IN ANY WAY OUT OF THE USE OF THIS SOFTWARE, EVEN IF ADVISED OF THE POSSIBILITY OF SUCH DAMAGE.

Copyright (c) 2000 The NetBSD Foundation, Inc.\nAll rights reserved.

This code is derived from software contributed to The NetBSD Foundation by Dieter Baron and Thomas Klausner.

Redistribution and use in source and binary forms, with or without modification, are permitted provided that the following conditions are met:

1. Redistributions of source code must retain the above copyright notice, this list of conditions and the following disclaimer.
2. Redistributions in binary form must reproduce the above copyright notice, this list of conditions and the following disclaimer in the documentation and/or other materials provided with the distribution.

3. All advertising materials mentioning features or use of this software must display the following acknowledgement:  
This product includes software developed by the NetBSD Foundation, Inc. and its contributors.
4. Neither the name of The NetBSD Foundation nor the names of its contributors may be used to endorse or promote products derived from this software without specific prior written permission.

THIS SOFTWARE IS PROVIDED BY THE NETBSD FOUNDATION, INC. AND CONTRIBUTORS "AS IS" AND ANY EXPRESS OR IMPLIED WARRANTIES, INCLUDING, BUT NOT LIMITED TO, THE IMPLIED WARRANTIES OF MERCHANTABILITY AND FITNESS FOR A PARTICULAR PURPOSE ARE DISCLAIMED. IN NO EVENT SHALL THE FOUNDATION OR CONTRIBUTORS BE LIABLE FOR ANY DIRECT, INDIRECT, INCIDENTAL, SPECIAL, EXEMPLARY, OR CONSEQUENTIAL DAMAGES (INCLUDING, BUT NOT LIMITED TO, PROCUREMENT OF SUBSTITUTE GOODS OR SERVICES; LOSS OF USE, DATA, OR PROFITS; OR BUSINESS INTERRUPTION) HOWEVER CAUSED AND ON ANY THEORY OF LIABILITY, WHETHER IN CONTRACT, STRICT LIABILITY, OR TORT (INCLUDING NEGLIGENCE OR OTHERWISE) ARISING IN ANY WAY OUT OF THE USE OF THIS SOFTWARE, EVEN IF ADVISED OF THE POSSIBILITY OF SUCH DAMAGE.

\* Notice displayed in English as required.