

SpacePole Self-Service Kiosk™

Hardware agnostic, Modular, Configurable, Customisable

A multifunctional kiosk with maximum flexibility for a wide range of self-service applications

The SpacePole Kiosk provides a configurable platform for self-service applications in the grocery, retail, hospitality, entertainment, and transportation sectors. Ideal for hospitality check-in/check-out, self-ordering, endless aisle, product display & advertising, ticketing, click & collect, and many more.



Compatibility

The kiosk is compatible with screens and tablets from 10" to 32", payment devices from 20+ different payment vendors and a wide range of printer and scanner brands as well as security, audio and navigation devices.

Features

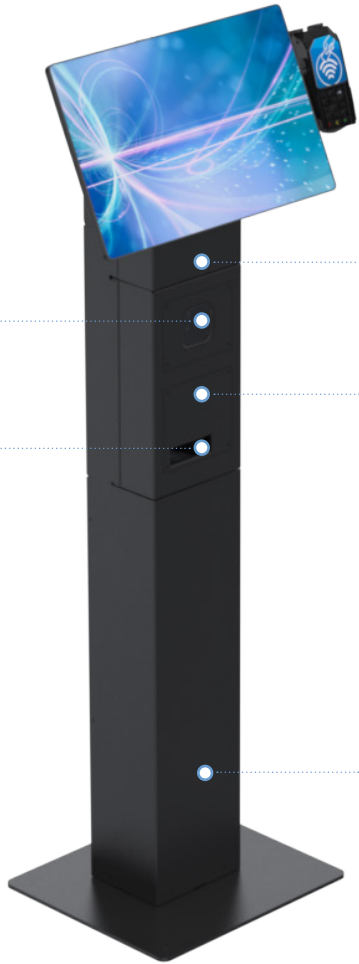
- **Modular:** Floor, counter, and wall options can be built from the same products
- **Configurable:** Build the kiosk to suit your application. Add payments, scanning, printing, customer recognition cameras, NFC, and fingerprint readers as required, along with any tablet or VESA compatible display from 10"- 32"
- **Customisable:** A bespoke kiosk can be built for your exact requirements, with design modifications, change of colour, and specific hardware combinations
- **Robust Design:** The kiosk is intended for unattended self-service use in a range of high traffic environments

Benefits

- **One look:** Your configuration can be free standing, counter, or wall mounted providing one standard platform across your self-service offering
- **Maximise ROI:** The kiosk allows for reuse of existing hardware, easy upgrades, and changes to the application. It supports most payment devices, printers, and a range of peripherals.
- **Adaptable:** To potential self-service scenarios across multiple business applications
- **Peace of Mind:** The SpacePole Kiosk provides a strong, secure and stand-alone solution

Antimicrobial powder paint coating is standard for all metal products in black (02) for effective long-term protection from germs and bacteria. Metal products are also available in white, light grey and other colours.

Self-Service Solutions



Top modules

- VESA 75/75 and 100/100 compliant
- Key holes for easy screen mounting
- Internal cable management for a neat installation
- A range of mounting options for peripherals on the sides and at the top



Kiosk Top Modules
(SPK110, SPK110-HP, SPK110-TOS)

Center module

- Up to two internal peripheral options
- Secure fixing of internal peripherals
- Internal cable management for a neat installation
- Key locked (SPK211 / SPK212)



Kiosk Center Modules
(SPK210, SPK211, SPK212)

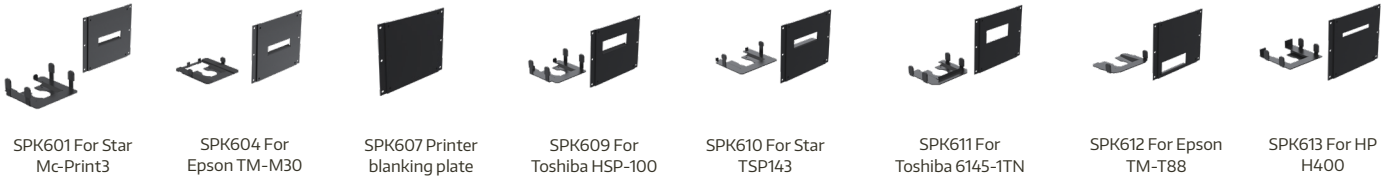
Floorstands

- Freestanding or bolted to the floor
- Internal cable management for a neat installation



Kiosk freestanding module
(SPK310)

Kiosk sets for printers:



SPK601 For Star Mc-Print3

SPK604 For Epson TM-M30

SPK607 Printer blanking plate

SPK609 For Toshiba HSP-100

SPK610 For Star TSP143

SPK611 For Toshiba 6145-1TN

SPK612 For Epson TM-T88

SPK613 For HP H400

Kiosk sets for scanners:



SPK600 For Datalogic GFS4470 serieS

SPK605 Scanner blanking plate

SPK608 For Magellan 1500i

Self-Service accessories

Wall mounts

- Enables wall mounting of a top module separately or combined with a center module
- Easy upgrade option from counter / freestanding to wall
- SPK603 compatible with SPK110 / SPK110-TOS
- SPK602 compatible with SPK110-HP



SPK602



SPK603

Peripheral arms

- Allows for peripherals to be added externally
- Use same version for both left and right sided installations
- Two peripheral options on each arm (top and bottom)
- Compatible with SPK110/SPK110-HP, SPK110-TOS and SPK211/SPK212 modules
- Requires specific hardware mount, i.e., MultiGrip plate, scanner bracket or printer plate
- SPK615 / SPK617: Includes DuraTilt for optimal payment installation
- SPK615 / SPK616: Fits max 24" display in landscape mode
- SPK617 / SPK618: Fits max 24" display in portrait mode



SPK615



SPK616



SPK617



SPK618

Straight payment brackets

- Allows for payment devices to be added externally
- Requires MultiGrip plates
- Allows for adjustment of the distance between screen and payment device for a perfectly aligned set-up



SPK511



SPK512

Counter base plate

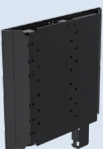
- Stable base for freestanding counter installation
- Compatible with SPK210 / SPK211 / SPK212



SPK515

POSlift for Kiosk

- Allows for 180mm of height adjustment of the screen with two options: 1st position: 20mm down and 160mm up - 2nd position: 70mm down and 110mm up
- Compatible with SPK110 and VESA 75/75 and VESA 100/100
- Internal cable management
- Requires a flat surface on the back of the screen to operate correctly



SPSK514



More accessories

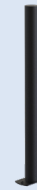
PAYlift (ACA308)

- Allows for 120mm of height adjustment of the payment device (towards the user)
- Includes tilting (-10 to 90 degrees)
- Includes rotation (90 degrees)
- Compatible with SPK616 / SPK618 and MH / MN



Top Pole (SPK504)

- Allows for peripherals to be added externally to the kiosk
- 500mm with internal cable management
- Compatible with SPK110, SPK110-HP, SPK110-TOS



Multigrip plates

- Allows for mounting payment devices on to the kiosk
- Designed for a specific payment device for a perfect fit
- Compatible with SPK615 / SPK617 / SPK511 / SPK512 / ACA308



XXXXXX-MH



XXXXXX-MN

Adapters

- SPK513: Allows for tablets to be mounted on the top module (SPK110)
- SPK513: Requires tablet specific SPAFxxxx or SPXFxxxx
- SPK614: Allows for VESA 200/200 displays to be mounted on the top module (SPK110)



SPK513



SPK614

Kiosk Mover

- Allows for easy relocation of the freestanding kiosk
- Slides in over the floor base
- The Kiosk mover can easily be removed after relocation of the freestanding kiosk



SPK506

Technical specifications

	Top modules	Center modules	Floorstand
Product configurations	Kiosk top module (SPK110); Kiosk top module for HP Engage One Pro & Essential w. hub (SPK110-HP); Kiosk top module for Toshiba TCX810 (SPK110-TOS)	Kiosk center module (Blank) (SPK210); Kiosk center module (Integrated printer and scanner) (SPK211); Kiosk center module (Integrated printer) (SPK212)	Kiosk freestanding module (SPK310)
Compatible SpacePole accessories	Kiosk center module (Blank) (SPK210); Kiosk center module (Integrated printer and scanner) (SPK211); Kiosk center module (Integrated printer) (SPK212)	Kiosk top module (SPK110); Kiosk top module for HP Engage One Pro & Essential w. hub (SPK110-HP); Kiosk top module for Toshiba TCX810 (SPK110-TOS); Kiosk freestanding module (SPK310); SPK211 and SPK212: Printer cover + printer plate for Star Mc-Print3 (SPK601); Printer cover + printer plate for Epson TM-M30 (SPK604); Kiosk blanking plate (Printer) (SPK607); Printer cover + printer plate for Toshiba HSP-100 (SPK609); Printer cover + printer plate for Star TSP143 (SPK610); Printer cover + printer plate for Toshiba 6145 (SPK611); Printer cover + printer plate for Epson TM-T88 (SPK612); Printer cover + printer plate for HP H400 (SPK613); For SPK211: Scanner cover + bracket for Datalogic GFS4470 series (SPK600); Kiosk blanking plate (Scanner) (SPK605); Kiosk bracket and coverplate for Magellan 1500i Scanner (SPK608)	Kiosk center module (Blank) (SPK210); Kiosk center module (Integrated printer and scanner) (SPK211); Kiosk center module (Integrated printer) (SPK212)
Compatible hardware	Screens 15" to 32" (Portrait and landscape) (SPK110); HP Engage One Pro (SPK110-HP); Toshiba TCX810 (SPK110-TOS)		N/A
Mounting	VESA 75/75 + VESA 100/100		N/A
Weight limit	15 kg		N/A
Material	Metal		
Dimensions (product) W x H x D (mm)	SPK110 & SPK110-TOS: 206 x 225 x 166; SPK110-HP: 206 x 260 x 166;	SPK210 & SPK212: 206 x 300 x 166; SPK211: 206 x 450 x 166;	SPK310: 450 x 760 x 400
Weight (product)	SPK110: 3.82 kg; SPK110-HP: 4.40 kg; SPK110-TOS: 3.79 kg	SPK210: 5.39 kg; SPK211: 7.49 kg; SPK212: 5.59 kg	SPK310: 22.20 kg
Dimensions (packaging)	SPK110, SPK110-HP & SPK110-TOS: Box L: 220 x W: 180 x H: 320 mm / L: 8.7 x W: 7.1 x H: 12.6 in;	SPK210 & SPK212: Box L: 220 x W: 180 x H: 320 mm / L: 8.7 x W: 7.1 x H: 12.6 in; SPK211: Box L: 220 x W: 180 x H: 470 mm / L: 8.7 x W: 7.1 x H: 18.5 in;	SPK310: Box L: 220 x W: 180 x H: 770 mm / L: 8.7 x W: 7.1 x H: 30.3 in
Weight (packaging)	SPK110: 4.32 kg; SPK110-HP: 4.90 kg; SPK110-TOS: 4.29 kg	SPK210: 5.89 kg; SPK211: 7.99 kg; SPK212: 6.09 kg	SPK310: 23.20 kg
Installation	Installation guide MK15-0418	Installation guide MK15-0419; Installation guide MK15-0440	Installation guide MK15-0420
Mounting options	Wall, counter or floor		Floor
Cable management	Yes (internal)		
Warranty	5 years		

Technical specifications

	Kiosk integrated printer and scanner sets	Peripheral arms and Brackets	Wall mounts, Base plates and Adapters
Product configurations	Scanner cover + bracket for Datalogic GFS4470 series (SPK600); Printer cover + printer plate for Star Mc-Print3 (SPK601); Printer cover + printer plate for Epson TM-M30 (SPK604); Kiosk blanking plate (Scanner) (SPK605); Kiosk blanking plate (Printer) (SPK607); Kiosk bracket and cover plate for Magellan 1500i Scanner (SPK608); Printer cover + printer plate for Toshiba HSP-100 (SPK609); Printer cover + printer plate for Star TSP143 (SPK610); Printer cover + printer plate for Toshiba 6145 (SPK611); Printer cover + printer plate for Epson TM-T88 (SPK612); Printer cover + printer plate for HP H400 (SPK613)	Kiosk Peripheral arm - Landscape (with DuraTilt) (SPK615); Kiosk Peripheral arm - Landscape (SPK616); Kiosk Peripheral arm - Portrait (with DuraTilt) (SPK617); Kiosk Peripheral arm - Portrait (SPK618); Kiosk straight bracket Portrait 22" to 15" (SPK511); Kiosk straight bracket Landscape 22" to 15" (SPK512)	SPK110-HP wall bracket (SPK602); Kiosk wall bracket (SPK603); Base plate for counter mounted Kiosk (SPK515); Kiosk tablet adapter (75/75 to 40/40 and MG) (SPK513); Kiosk adapter from VESA 100 / 100 to VESA 200 / 200 (SPK614)
Compatible SpacePole accessories	For SPK211 and SPKSPK212: Printer cover + printer plate for Star Mc-Print3 (SPK601); Printer cover + printer plate for Epson TM-M30 (SPK604); Kiosk blanking plate (Printer) (SPK607); Printer cover + printer plate for Toshiba HSP-100 (SPK609); Printer cover + printer plate for Star TSP143 (SPK610); Printer cover + printer plate for Toshiba 6145 (SPK611); Printer cover + printer plate for Epson TM-T88 (SPK612); Printer cover + printer plate for HP H400 (SPK613); For SPK211: Scanner cover + bracket for Datalogic GFS4470 series (SPK600); Kiosk blanking plate (Scanner) (SPK605); Kiosk bracket and coverplate for Magellan 1500i Scanner (SPK608)	Kiosk top module (SPK110); Kiosk top module for HP Engage One Pro & Essential w. hub (SPK110-HP); Kiosk top module for Toshiba TCX810 (SPK110-TOS) for SPK615, SPK616, SPK617, SPK618; Kiosk top module (SPK110) and Kiosk top module for Toshiba TCX810 (SPK110-TOS) for SPK511 /SPK512	Kiosk top module for HP Engage One Pro & Essential w. hub (SPK110-HP) for SPK110-HP wall bracket (SPK602); Kiosk top module (SPK110) and Kiosk top module for Toshiba TCX810 (SPK110-TOS) for Kiosk wall bracket (SPK603); Base plate: Kiosk center module (Blank) (SPK210); Kiosk center module (Integrated printer and scanner) (SPK211); Kiosk center module (Integrated printer) (SPK212); Adapters: Kiosk top module (SPK110); X-Frames (SPXFxxxx), A-Frames (SPAFxxxx), U-Frame (SPUF001)
Compatible hardware	Datalogic GFS4470 series (SPK600); Star Mc-Print3 (SPK601); Epson TM-M30 (SPK604); Magellan 1500i Scanner (SPK608); Toshiba HSP-100 (SPK609); Star TSP143 (SPK610); Toshiba 6145 (SPK611); Epson TM-T88 (SPK612); HP H400 (SPK613)	N/A	Wall mounts and Base plates: N/A; Adapters: Tablets 10" - 14"; Screens 15" to 32" (Portrait and landscape) (SPK614)
Mounting	N/A	Standard SpacePole flange hole pattern Ø73,5	Wall mount: 120 x 170mm (SPK603); 120 x 205mm (SPK602); Base plate: N/A; Adapters: VESA 200/200 (SPK614); VESA 40/40 (SPK513)
Weight limit	N/A	1.5kg	Wall mount: 15 kg; Base plates: N/A; Adapters: 15 kg
Material		Metal	
Dimensions (product) W x H x D (mm)	SPK600: 190 x 138 x 30; SPK601: 190 x 191 x 152; SPK604: 190 x 191 x 162; SPK605: 190 x 119 x 5; SPK607: 190 x 149 x 5; SPK608: 190 x 139 x 61; SPK609 and SPK610: 190 x 191 x 144; SPK611: 190 x 191 x 130; SPK612: 190 x 191 x 127; SPK613: 190 x 191 x 146	SPK615: 275 x 195 x 160; SPK616: 275 x 120 x 160; SPK617: 195 x 195 x 120; SPK618: 195 x 120 x 120; SPK511: 300 x 120 x 5; SPK512: 400 x 120 x 5	Wall mount: SPK602: 200 x 255 x 28; SPK603: 200 x 220 x 28; Base plate: SPK515: 340 x 6 x 300 Adapters: SPK513: 90 x 90 x 10; SPK614: 228 x 228 x 2
Weight (product)	SPK600: 0.52 kg; SPK601 & SPK604: 0.87 kg; SPK605: 0.47 kg; SPK607: 0.59 kg; SPK608: 0.49 kg; SPK609: 0.84 kg; SPK610 & SPK613: 0.86 kg; SPK611: 0.80 kg; SPK612: 0.83 kg;	SPK615: 0.99 kg; SPK616: 0.72 kg; SPK617: 0.80 kg; SPK618: 0.51 kg; SPK511: 0.46 kg; SPK512: 0.65 kg	Wall mount: SPK602: 1.00 kg; SPK603: 0.86 kg; Base plate: SPK515: 4.02 kg; Adapters: SPK513: 0.08 kg; SPK614: 0.87 kg
Dimensions (packaging)	SPK600, SPK601, SPK604, SPK605, SPK607, SPK608, SPK609, SPK610, SPK611, SPK612 & SPK613: Box L: 244.5 x W: 176 x H: 63 mm / L: 9.6 x W: 6.9 x H: 2.5 in	SPK615, SPK616, SPK617 & SPK618: Box L: 365 x W: 131 x H: 113 mm / L: 14.4 x W: 5.2 x H: 4.4 in; SPK511 & SPK512: Box L: 400 x W: 300 x H: 130 mm / L: 15.7 x W: 11.8 x H: 5.1in;	Wall mount: SPK602 & SPK603: Box L: 400 x W: 300 x H: 130 mm / L: 15.7 x W: 11.8 x H: 5.1 in; Base plate: SPK515: Box L: 373 x W: 257 x H: 117 mm / L: 14.7 x W: 10.1 x H: 4.6 in; Adapters: SPK513: Box L: 193 x W: 126 x H: 126 mm / L: 7.6 x W: 5.0 x H: 5.0 in; SPK614: Box L: 271 x W: 75 x H: 260 mm / L: 10.7 x W: 3.0 x H: 10.2 in
Weight (packaging)	SPK600: 0.82 kg; SPK601 & SPK604: 1.17 kg; SPK605: 0.77 kg; SPK607: 0.89 kg; SPK608: 0.79 kg; SPK609 & SPK610: 1.14 kg; SPK611: 1.10 kg; SPK612: 1.13 kg; SPK613: 1.16 kg	SPK615: 1.49 kg; SPK616: 1.22 kg; SPK617: 1.30 kg; SPK618 & SPK511: 1.00 kg; SPK512: 1.10 kg	Wall mount: SPK602: 1.20 kg; SPK603: 1.10 kg; Base plate: SPK515: 4.30 kg Adapters: SPK513: 0.40 kg; SPK614: 1.25 kg
Installation	Installation guide MK15-0421; Installation guide MK15-0422; Installation guide MK15-0423; Installation guide MK15-0427; Installation guide MK15-0431; Installation guide MK15-0432; Installation guide MK15-0433; Installation guide MK15-0434; Installation guide MK15-0435; Installation guide MK15-0436	Installation guide MK15-0395	Wall mount: Installation guide MK15-0424; Base plate: Installation guide MK15-0419; Adapters: Installation guide MK15-0437
Mounting options		Wall, counter or floor	Wall mount: Wall; Baseplate: Counter; Adapters: Wall, counter, or floor
Cable management		Yes (Internal)	N/A
Warranty		5 Years	