

# dLAN® 550+ WiFi



## Manual

**devolo**  
The Network Innovation

---

devolo dLAN<sup>®</sup> 550+ WiFi



## © 2016 devolo AG Aachen (Germany)

While the information in this manual has been compiled with great care, it may not be deemed an assurance of product characteristics. devolo shall be liable only to the degree specified in the terms of sale and delivery.

The reproduction and distribution of the documentation and software supplied with this product and the use of its contents is subject to written authorisation from devolo. We reserve the right to make any alterations that arise as the result of technical development.

### Trademarks

Android™ is a registered trademark of the Open Handset Alliance.

Linux® is a registered trademark of Linus Torvalds.

Ubuntu® is a registered trademark of Canonical Ltd.

Mac® and Mac OS X® are registered trademarks of Apple Computer, Inc.

iPhone®, iPad® and iPod® are registered trademarks of Apple Computer, Inc.

Windows® and Microsoft® are registered trademarks of Microsoft Corp.

Wi-Fi®, Wi-Fi Protected Access™, WPA™, WPA2™ and Wi-Fi Protected Setup™ are registered trademarks of the Wi-Fi Alliance®.

devolo, dLAN®, Vianect® and the devolo logo are registered trademarks of devolo AG.

All other names mentioned may be trademarks or registered trademarks of their respective owners. Subject to change without notice. No liability for technical errors or omissions.

### devolo AG

Charlottenburger Allee 60

52068 Aachen

Germany

[www.devolo.com](http://www.devolo.com)

Aachen, August 2016

# Contents

<b>1</b>	<b>Preface</b>	<b>5</b>
1.1	About this manual	5
1.1.1	Intended use	5
1.1.2	CE conformity	6
1.1.3	Safety notes	6
1.2	devolo on the Internet	7
<b>2</b>	<b>Introduction</b>	<b>9</b>
2.1	What exactly is dLAN?	9
2.2	What is WLAN?	9
2.2.1	Wi-Fi or WLAN?	10
2.3	What exactly is range +?	10
2.4	What does WiFi Clone mean?	10
2.5	What is WiFi Move Technology?	10
2.6	The dLAN 550+ WiFi	11
2.6.1	Encryption button	11
2.6.2	WiFi button	13
2.6.3	Network jack	14
2.6.4	Reset	15
2.6.5	WiFi antennas	15
2.6.6	Integrated electrical socket	15
<b>3</b>	<b>Initial use</b>	<b>17</b>
3.1	Package contents	17
3.2	System requirements	17
3.3	Connecting the dLAN 550+ WiFi	18
3.3.1	Starter Kit and addition – Setting up a new dLAN network	18
3.3.2	Addition – Expanding an additional network	19
3.4	Installation of devolo software	23
3.5	Removing a dLAN 550+ WiFi from the network	25

<b>4</b>	<b>Network configuration</b>	<b>27</b>
4.1	Calling up the built-in configuration interface	27
4.2	Menu description	28
4.3	WiFi configuration	30
4.3.1	Access point	30
4.3.2	WLAN time control	32
4.3.3	Guest account	33
4.3.4	Parental controls	34
4.3.5	WLAN filters	35
4.3.6	WiFi Clone and WiFi Move	36
4.3.7	WiFi Protected Setup (WPS)	36
4.4	Status overview	38
4.5	Device configuration	39
4.5.1	dLAN settings	39
4.5.2	dLAN devices	39
4.5.3	Add a dLAN device	39
4.6	Management	40
4.6.1	Language selection	40
4.6.2	Device security	40
4.6.3	Network settings	41
4.6.4	System	41
4.6.5	Management	44
<b>5</b>	<b>Annex</b>	<b>45</b>
5.1	Frequency range and transmitting power	45
5.2	Channels and carrier frequencies	45
5.3	Bandwidth optimisation	46
5.4	Disposal of old devices	46
5.5	Warranty conditions	47

# 1 Preface

*Thank you for placing your trust in this devolo product.*

*In just a few easy steps, you can set up your own network with the dLAN 550+ WiFi. devolo dLAN adapters transmit the Internet data over the household electrical wiring, making every electrical socket a network access point.*

## 1.1 About this manual

Carefully read all safety and operating instructions before setting up the device and store the manual and installation guide for later reference.

After a brief introduction to dLAN® and WiFi basics and an introduction to the dLAN 550+ WiFi in **Chapter 2**, **Chapter 3** tells you how to successfully start using the adapter in your network. **Chapter 4** describes in detail the setting options of the built-in configuration interface and thus also access to the Wi-Fi. Tips for bandwidth optimisation, information about product safety and environmental compatibility of the device, as well as our warranty terms, can be found in **Chapter 5** at the end of the manual.

### Icons

This section contains a brief description of the icons used in this manual.



**Very important note. Failure to observe this note may result in damage.**



**Important note that should be observed.**



*Additional information, background material and configuration tips for your device.*

### 1.1.1 Intended use

Use the adapter as described in these instructions to prevent damage and injuries.



**The device may be used only indoors.**



### 1.1.2 CE conformity

The product conforms to the basic requirements of **directives 2014/53/EU, 2014/35/EU** and the other relevant requirements of the Radio and Telecommunications Terminal Equipment Act (FTEG).

***The product is intended for operation in the EU, Switzerland and Norway.***

The product is a Class B product. This class may cause interference when used in residential environments.

**I** *A printout of the CE declaration is included with the product. You can also find it online at [www.devolo.com](http://www.devolo.com).*

### 1.1.3 Safety notes

It is essential to have read and understood all safety and operating instructions before the devolo device is used for the first time; keep them safe for future reference.



**DANGER** due to electricity

Users should never **open** devolo devices. **Opening the device poses a risk of electric shock!**

Users do not need to carry out any maintenance on devolo devices. In the event of damage, disconnect the

devolo device from the mains supply by pulling it or its plug out of the power outlet. Then contact qualified specialist personnel (after-sales service) exclusively.

**Damage** is deemed to have occurred, for example,

- if the power plug is damaged.
- if the devolo device has been showered with liquid (e.g. rain or water).
- if the devolo device is inoperable.
- if the housing of the devolo device is damaged.

If installing on a wall using screws, make sure that no gas, water or power lines in the wall get damaged.

**There is a danger of electric shock!**

devolo devices may only be operated using a **mains power supply**, as described on the **nameplate**.

To disconnect devolo devices from the mains supply, pull the device itself or its mains plug from the power outlet.



**The electrical socket and all connected network devices should be easily accessible so that you can pull the mains plug quickly if needed.**

Only use the devolo device at a dry location.

**Disconnect the devolo device from the mains supply to clean!** Avoid cleaning agents containing

solvents, since they can cause damage to the housing. Only use a dry towel for cleaning.



### DANGER due to overheating

Multiple devolo devices must not **be interlocked**.

devolo devices should only be installed at locations that guarantee adequate ventilation. Slots and openings on the housing are used for ventilation:

- Do not **cover** devolo devices during operation.
- Do not place **any objects on** devolo devices.
- Do not insert **any objects** into the **openings** of devolo devices.
- devolo devices must **not** be placed directly **next to** an open **flame** (such as fire or candles).
- devolo devices must **not be exposed to direct heat radiation** (e.g. radiator, direct sunlight).



### DANGER due to overheating

The housing of the device can get hot during operation. Make sure that your device is installed so that it is protected from being touched.

## 1.2 devolo on the Internet

For detailed information on our products and dLAN, visit [www.devolo.com](http://www.devolo.com). The **Powerline** area not only contains product descriptions and documentation, but also updates of devolo software and your device's firmware.

If you have any further ideas or suggestions related to our products, please don't hesitate to contact us at [support@devolo.com](mailto:support@devolo.com)!





## 2 Introduction

**dLAN** is an intelligent, secure technology that lets you set up a home network easily, quickly and economically via your household electrical wiring, without the need for complex and expensive dedicated cabling.



Fig. 1 devolo dLAN and Wi-Fi throughout the home

### 2.1 What exactly is dLAN?

The dLAN (**direct Local Area Network**) uses the household power grid to transfer data between computers and other network components equipped with suitable adapters. As a result, any electrical socket can be used as a network access point. The data is modulated prior to transfer and sent as a signal via household power lines. State-of-the-art technology ensures that the power and data networks do not interfere with one another. Networking via dLAN is fast and secure. The data is encrypted using a key to prevent interception by third parties.

### 2.2 What is WLAN?

WiFi refers to a **WLAN (Wireless Local Area Network)**, the use of radio technology to network computers and other devices. While it is possible to wirelessly connect computers in pairs ("peer-to-peer", p2p), a central access point is usually required to set up a network of multiple devices. This turns a WiFi router into an access point as well as a modem for Internet access and into a router for acting as a go-between within the network.

The wireless network established by an access point has only limited range. The range of the access point,

which is also known as a "radio cell", is impeded by building walls. In some cases, stable connections are often only possible between WiFi devices within a single room.

Since it is not possible to rely on hardware such as network cables (in a LAN) or household wiring (in a dLAN) to control access to a WiFi network, wireless networking naturally presents special security challenges. WiFi networks therefore use a number of security measures, such as a concealed network name (SSID - Service Set Identifier), data encryption and access control via the MAC addresses of the devices (clients).

### 2.2.1 Wi-Fi or WLAN?

Wi-Fi is an invented brand name of the Wi-Fi Alliance, a consortium that certifies devices with wireless interfaces. In many countries, Wi-Fi is also used synonymously with WLAN, which if taken strictly, is incorrect, because Wi-Fi designates the wireless standard and WLAN the wireless network.

## 2.3 What exactly is range +?

**Range +** is a technology for devolo dLAN products. Unlike conventional Powerline technology, range+ Technology uses all three lines (neutral, earth wire, phase) of the electrical circuit, making use of the full

physical potential. Thanks to patented signal coupling, data transmission over the mains supply is optimised. This results not only in a more stable Internet connection that is less sensitive to interference, but also in increased range.

## 2.4 What does WiFi Clone mean?

**WiFi Clone** is a technology for devolo WiFi products that makes it extremely easy to integrate new devices into an existing WiFi network. For this purpose, just plug the corresponding adapter into an available electrical socket and press the encryption button (for older models, the WPS button). The devolo WiFi devices now automatically exchange their WiFi credentials with the existing WiFi router and synchronise SSIDs, keys and any configured settings, such as parental control and time control settings.

## 2.5 What is WiFi Move Technology?

**WiFi Move Technology** is a function for devolo WiFi products that expands and optimises the existing WiFi network. If multiple devolo WiFi devices are used, these act as access points that connect via Powerline. The devolo WiFi products automatically connect to the access point with the strongest signal. This creates a fast and stable WiFi network throughout the home.

## 2.6 The dLAN 550+ WiFi

The dLAN 550+ WiFi is equipped with

- An encryption button (home icon) with LED status display
- A WiFi button with LED status display



***The LED status display can be deactivated on the configuration interface of the adapter (see 4.6 Management).***

- A network connection,
- A reset button (small opening next to the network jack),
- Two internal WiFi antennas and
- One integrated electrical socket



**Fig. 2 dLAN 550+ WiFi is country-specific**

### 2.6.1 Encryption button



This button controls the following functions:

#### Encrypting the dLAN network

- To encrypt your dLAN network individually, press **each encryption button** on the connected devices within 2 minutes, for approximately **1 second** each.
- To remove a dLAN device from your network, press the **encryption button** on the corresponding device and hold **for at least 10 seconds**.

■ For more information, refer to Chapter 3.3 **Connecting the dLAN 550+ WiFi**.

### Reading the dLAN indicator light

The integrated indicator lights (**LEDs**) show the dLAN status for the dLAN 550+ WiFi by illuminating and/or flashing:

■ Check whether the adapter is connected to the mains supply correctly and whether the encryption process has been carried out successfully. For more information about this, refer to **3.3 Connecting the dLAN 550+ WiFi**.

### Flashing behaviour of the dLAN LED

LED	Flashing behaviour	Meaning
Red LED	Lights up steady	Adapter is in the start-up process
Red LED	Flashes at intervals of <b>0.5 sec.</b> (on/off)	No dLAN connection exists

LED	Flashing behaviour	Meaning
Red LED	Flashes at intervals of <b>2 sec.</b> (on/off)	Data transmission rate not in optimum range *
White LED	Lights up steady	An encrypted dLAN connection exists and the adapter is ready to operate
White LED	Flashes at intervals of <b>0.5 sec.</b> (on/off)	dLAN encryption being established
White LED	Flashing at intervals of <b>0.5/50-60 sec.</b> (On/off)	Adapter is in PowerSave mode

## Setting up WiFi Clone and using WiFi Move Technology

WiFi Move Technology is a function for synchronising the WiFi settings of all WiFi adapters. Activate the synchronisation either using the functions on the configuration interface (see Chapter **4.3.6 WiFi Clone and WiFi Move**) or at the touch of a button on the adapter.

- ① **First** press the encryption button with the home icon (for about **1 second**) on an **existing** dLAN 550+ WiFi that has the **entire WiFi configuration** which is to be transferred to all other dLAN 550+ WiFi adapters. Then, **within 2 minutes**, press each encryption button on the new **dLAN 550+ WiFi** devices (for about **1 second**). The WiFi settings are now being synchronised (**WiFi Clone**).
- ② The **WiFi** adapters are now **continuously connected** to each other and, from now on, share changes to the **WiFi configuration automatically** with each other (**WiFi Move Technology**).

### 2.6.2 WiFi button



The WiFi button controls the following WiFi functions:

#### WiFi On/Off:

- In the **factory default settings**, the **WiFi** setting is already **enabled** and the WiFi encryption is set to **WPA2**. The WiFi key is the unique key of the dLAN 550+ WiFi. You can find this key on the label on the rear side of the housing.

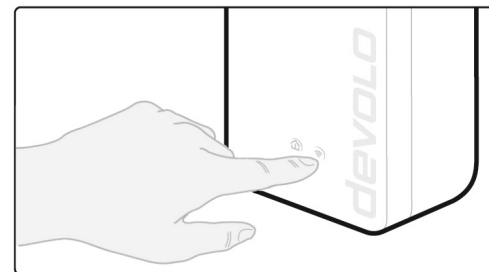


Fig. 3 WiFi button

- In order to **switch WiFi off**, press and hold the WiFi button **longer than 3 seconds**.
- In order to switch **WiFi back on**, **tap the WiFi button**.

#### Connecting WiFi devices via WPS

- If the device is still on **factory defaults**, tap the **WiFi button** in order to activate **WPS**.
- If the **WiFi** connection was **switched off** and **you would like to activate WPS**, press the

**WiFi button twice**; once to switch WiFi on, and again to activate WPS.

- *WPS, developed by the WiFi Alliance, is one of the encryption standards in a WiFi network. The objective of WPS is to make it easier to add devices to an existing network. For more detailed information, refer to Chapter 4.3.7 WiFi Protected Setup (WPS).*

### Reading the WiFi indicator light

The integrated indicator lights (**LEDs**) show the WiFi status for the dLAN 550+ WiFi by illuminating and/or flashing:

#### Flashing behaviour of the WiFi LED

LED	Flashing behaviour	Meaning
White LED	Lights up steady	An encrypted WiFi connection exists and the adapter is ready to operate

LED	Flashing behaviour	Meaning
White LED	Off	WiFi connection switched off or Adapter is in the start-up process
White LED	Flashes at intervals of <b>0.5 sec.</b> (on/off)	WPS encryption being established

### 2.6.3 Network jack

A PC or other network device can be connected to the dLAN 550+ WiFi at this port using a standard network cable.

## 2.6.4 Reset

The **reset** button (next to the network jack) has two different functions:

- **The device restarts** if you press the Reset button **for less than 10 seconds**.
- To change the configuration of the dLAN 550+ WiFi back to the **factory defaults**, press the Reset button **for more than 10 seconds**. Keep in mind that all settings that have already been configured will be lost!
  - *You can use a pointed object (such as a paper clip) to press the Reset button.*

## 2.6.5 WiFi antennas

The internal WiFi antennas are for connecting to other network devices wirelessly.

## 2.6.6 Integrated electrical socket

To connect other network devices to your mains supply, use the electrical socket of the dLAN 550+ WiFi. The mains filter integrated into the dLAN 550+ WiFi eliminates any noise of connected devices and significantly improves data transmission in the network.





## 3 Initial use

This chapter tells you everything you need to know to set up and use your dLAN 550+ WiFi. We describe how to connect the adapter and briefly describe the devolo software. Further, detailed information is available at [www.devolo.com](http://www.devolo.com).

### 3.1 Package contents

Please ensure that the delivery is complete before beginning with the installation of your dLAN 550+ WiFi.

- **Extension:**
  - dLAN 550+ WiFi
  - Hard copy of installation guide
  - CE declaration

or

- **Starter Kit:**
  - dLAN 550+ WiFi
  - dLAN 550 duo+
  - Network cable
  - Hard copy of installation guide
  - CE declaration

devolo AG reserves the right to change the package contents without prior notice.

### 3.2 System requirements

- **Operating systems:** Windows 7 (32 bit/64 bit), Windows 8 (32 bit/64 bit), Windows 8 Pro (32 bit/64 bit), Windows 10 (32 bit/64 bit), Windows 10 Pro (32 bit/64 bit), Linux (32 bit/64 bit), Mac (OS X 10.6)
- **Network jack**



*To set up a dLAN network, you need at least two dLAN devices (200 Mbps, 500 Mbps, 600 Mbps or 1200 Mbps).*

### 3.3 Connecting the dLAN 550+ WiFi



***The device may be used only indoors.***

- *Before the networking procedure, write down the WiFi key of the dLAN 550+ WiFi. You can find this unique key on the rear side of the housing.*

*Enter the WiFi key in your laptop, tablet or smartphone later as a network security key to establish an encrypted connection with the WiFi network dLAN 550+ WiFi.*

In the following sections we describe how to connect the dLAN 550+ WiFi and integrate it into the network. We clarify the exact procedures based on potential network scenarios:

#### 3.3.1 Starter Kit and addition – Setting up a new dLAN network

- ① Connect the dLAN 550 duo+ to your Internet access device's network jack (e.g. WiFi router).

- ② Plug the dLAN 550+ WiFi into a wall socket. As soon as the indicator light of the encryption button with the home icon is flashing red at regular intervals (after approx. 50 sec.), the adapter is ready to operate but not yet integrated into the dLAN network.

To disconnect devolo devices from the mains supply, pull the device itself or its mains plug from the power outlet.



***The electrical socket and all connected network devices should be easily accessible so that you can pull the mains plug quickly if needed.***

#### Connecting the dLAN 550 duo+ and dLAN 550+ WiFi to a dLAN network

Before you can use the adapter in a dLAN network, first you have to connect it as a network. This is accomplished by using a shared dLAN password. This forms a delimited dLAN network. Shared use of the dLAN password serves both as access control to the dLAN network as well as the encryption, and thereby the interception protection, of the transmitted data.

The dLAN password can be set in different ways:

### **dLAN network encryption at the touch of a button**

- ③ **First** press the encryption button (for about **1 second**) of the **dLAN 550 duo+** and then, **within 2 minutes**, press the encryption button with the home icon of the **dLAN 550+ WiFi** (for about **1 second**).
- ④ As soon as the indicator light in the encryption button lights up white, your dLAN network is set up and protected from unauthorised access.

or

### **dLAN network encryption by entering the dLAN password in the configuration interface.**

More information can be found in Chapter **4.5 Device configuration**.

## **3.3.2 Addition – Expanding an additional network**

- ① Plug the dLAN 550+ WiFi into a wall socket. As soon as the indicator light of the encryption button with the home icon is flashing red at regular intervals (after approx. 50 sec.), the adapter is ready to operate but not yet integrated into the dLAN network.

To disconnect devolo devices from the mains supply, pull the device itself or its mains plug from the power outlet.



***The electrical socket and all connected network devices should be easily accessible so that you can pull the mains plug quickly if needed.***

### **Integrating the dLAN 550+ WiFi into an existing dLAN network**

Before you can use the dLAN 550+ WiFi in your dLAN network, first you have to connect it to your existing dLAN devices as a network. This is accomplished by using a shared dLAN password. This forms a delimited dLAN network. Shared use of the dLAN password serves as access control to the dLAN network as well as the encryption of the transmitted data. The dLAN password can be set in different ways:

### **dLAN network encryption at the touch of a button (home icon)**

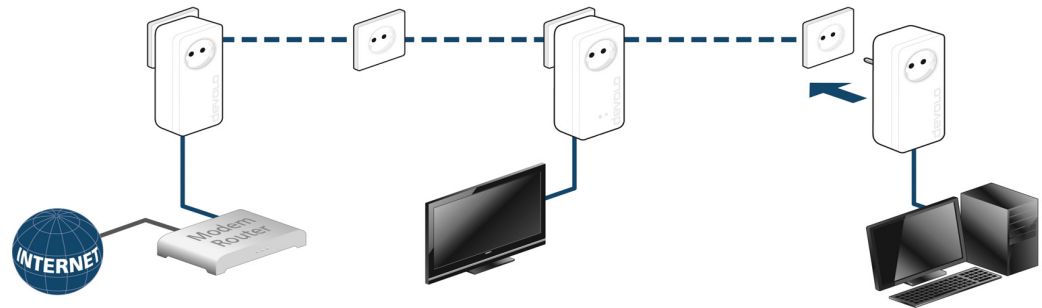
- ② **First** press the encryption button (for about **1 second**) on a device in your existing network and then, **within 2 minutes**, press the encryption button with the home icon on the new dLAN 550+ WiFi (for about **1 second**).

The new dLAN 550+ WiFi is now integrated into your existing, encrypted dLAN network.

or

**dLAN network encryption by entering the dLAN password in the configuration interface of the dLAN 550+ WiFi.**

More information can be found in Chapter **4.5 Device configuration**.



**Fig. 4: Setting up a dLAN network**

### Integrating the dLAN 550+ WiFi into an existing WiFi network

- ③ Establish the WiFi connection with your laptop, tablet or smartphone by entering the previously noted WiFi key as the network security key.

To ensure that the dLAN 550+ WiFi has the same WiFi configuration as your WiFi router, you can apply the WiFi access data at the touch of a button using the

**WiFi Clone** function. This can be enabled in different ways:

### Enabling WiFi Clone at the touch of a button

- ④ First press the **encryption button** with the **home icon** on the front side of dLAN 550+ WiFi and then press the WPS button of the WiFi router with the access data you want to apply.

or

### Enabling WiFi Clone via the configuration interface.

More information about this function can be found in Chapter **WiFi Clone**.



To integrate the dLAN 550+ WiFi into an existing **WiFi network with devolo WiFi devices of the 500 series** (e.g. dLAN 500 WiFi or dLAN 500 Wireless+), you have to transfer the settings of your existing WiFi configuration **manually** to the configuration interface of the dLAN 550+ WiFi.

- For more information on the configuration interface, refer to Chapter **4 Network configuration**.

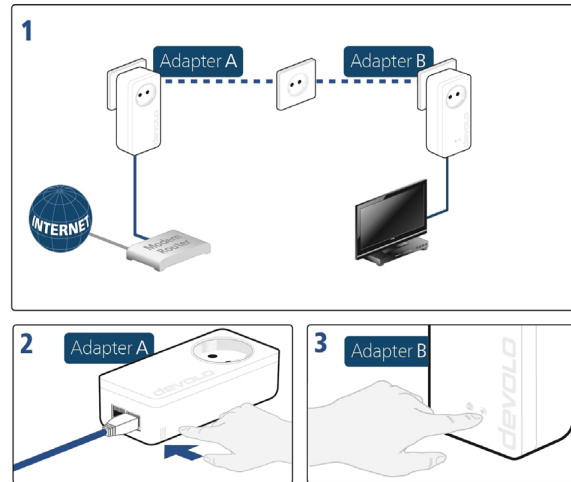


Fig. 5: Setting up the dLAN network

### Connecting devices to the WiFi network

- ⑤ Establish the WiFi connection with your laptop, tablet or smartphone by entering the previously noted WiFi key as the network security key.

### Transferring the current WiFi configuration to the dLAN adapter

To ensure that the dLAN 550+ WiFi shows the same WiFi configuration as your WiFi router, you can apply

the WiFi access data at the touch of a button. The **WiFi Clone** function can be enabled in different ways:

### Enabling WiFi Clone at the touch of a button

- ⑥ First press the **encryption button** with the **home icon** on the front side of dLAN 550+ WiFi and then press the WPS button of the WiFi router with the access data that you want to apply.

or

### Enabling WiFi Clone via the configuration interface.

More information about this function can be found in Chapter **WiFi Clone**.

- ⑦ To transfer the WiFi settings of an existing **WiFi adapter** to the dLAN 550+ WiFi, **first** press the encryption button with the home icon (approx. **1 second**). **Finally**, press the encryption button with the home icon on the new **dLAN 550+ WiFi** (approx. **1 second**). The **entire WiFi configuration** is now transmitted to the new dLAN 550+ WiFi adapter.
- ⑧ The existing **WiFi adapter** transmits both the **dLAN** as well as the **entire WiFi configuration** to the new dLAN 550+ WiFi adapter.
- ⑨ To integrate additional dLAN 550+ WiFi devices into your WiFi network, repeat this step.

The WiFi adapters are now **continuously connected** to each other and, from now on, share changes to the **WiFi configuration** with each other automatically.

- *To secure your WiFi network with an individual password, install devolo Cockpit and proceed with configuring your network. To do so, read Chapters **3.4 Installation of devolo software** and **4 Network configuration**.*

## 3.4 Installation of devolo software

### Downloading my devolo App

The **my devolo App** is devolo's **free app** also for checking and configuring WiFi, dLAN and LAN connections for the dLAN 550+ WiFi (via smartphone or tablet). The smartphone or tablet connects to the dLAN 550+ WiFi at home via **WiFi**.

- ① Download the **my devolo App** to your smartphone or tablet computer from the corresponding store.
- *The quickest way to find the app is by clicking the magnifying glass in the store and searching directly for **devolo**.*



② **my devolo App** is placed in your smartphone's or tablet's app list as usual. Tapping on the **my devolo App** icon brings you to the start menu.



- *You can find more information about my devolo App online at [www.devolo.co.uk/service/my-devolo-app/](http://www.devolo.co.uk/service/my-devolo-app/).*

### Installing devolo Cockpit software

The devolo **Cockpit** computer program finds all accessible dLAN adapters in your dLAN network, displays information about these devices and encrypts your dLAN network individually. The software takes you to the configuration interface to configure your **WiFi network** on a computer.

### Software for Windows

The devolo Cockpit software is available at [www.devolo.com/cockpit](http://www.devolo.com/cockpit). After you have downloaded the installation file to your PC, start it by double-clicking on it.

Use the installation wizard to install devolo **Cockpit** for using the adapter with the Windows operating system. You can find the installed application in the **Start**  **All Programs**  **devolo** program group.

### Software for Mac (OS X)

The devolo Cockpit software is available at [www.devolo.com/cockpit](http://www.devolo.com/cockpit). After you have downloaded the installation file to your PC, start it by double-clicking on it.

### Software for Linux (Ubuntu)

The devolo Cockpit software is available at [www.devolo.com/cockpit](http://www.devolo.com/cockpit). After you have downloaded and installed the installation file to your PC, start the file.

- *You can find more information about the devolo Cockpit software online at [www.devolo.com/cockpit](http://www.devolo.com/cockpit).*

### 3.5 Removing a dLAN 550+ WiFi from the network

To remove the dLAN 550+ WiFi device from an existing network, press the encryption button with the home icon on the corresponding adapter for **at least**

**10 seconds**. The device will be assigned a new randomly generated password and will thus no longer be able to access the network. To integrate the device into a different network, follow the steps described above, depending on whether you are setting up a new network or adding the device to an existing one.

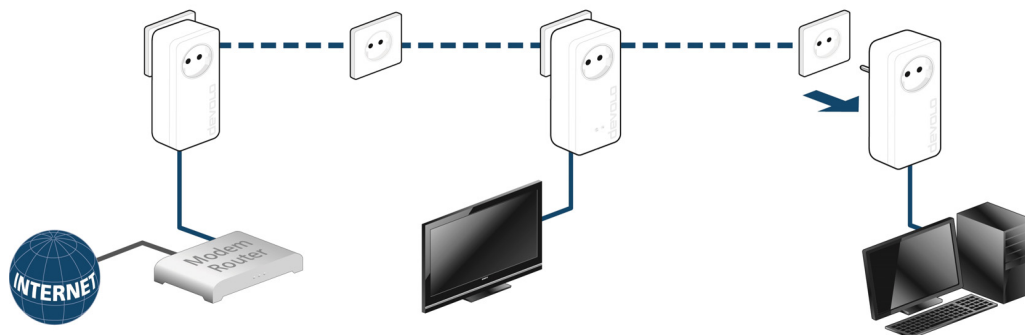


Fig. 6: Removing a dLAN adapter



## 4 Network configuration

The dLAN 550+ WiFi has a built-in configuration interface that can be called up using a standard web browser. All settings for operating the device can be modified here.

### 4.1 Calling up the built-in configuration interface

You can access the built-in online configuration interface for the dLAN 550+ WiFi in different ways:

- Using the **my devolo App** on your smartphone or tablet, you can access the device's configuration interface by going to the my devolo App **overview page** and tapping on the **gear/arrow**.
- *You can find more information on my devolo App in Chapter 3.4 Installation of devolo software.*
- Using the **devolo Cockpit software** under **Start**, you can reach the device's configuration interface by clicking the corresponding entry of the dLAN 550+ WiFi.

Then the program determines the current IP address and starts the configuration in the web browser.

- *You can find more information on devolo Cockpit software in Chapter 3.4 Installation of devolo software.*



By default, the configuration interface will open directly. However, if a login password was set via the option **Device configuration** (symbol on the left) ⇨ **Device security**, you have to enter this first (refer to **4.6.2 Device security**).

## 4.2 Menu description

All menu functions are described in the corresponding interface as well as in the associated chapter in the manual. The sequence of the description in the manual follows the structure of the menu.

The four central areas of the configuration interface are displayed on the bottom edge of the screen. Click the button of an area to move directly into it.

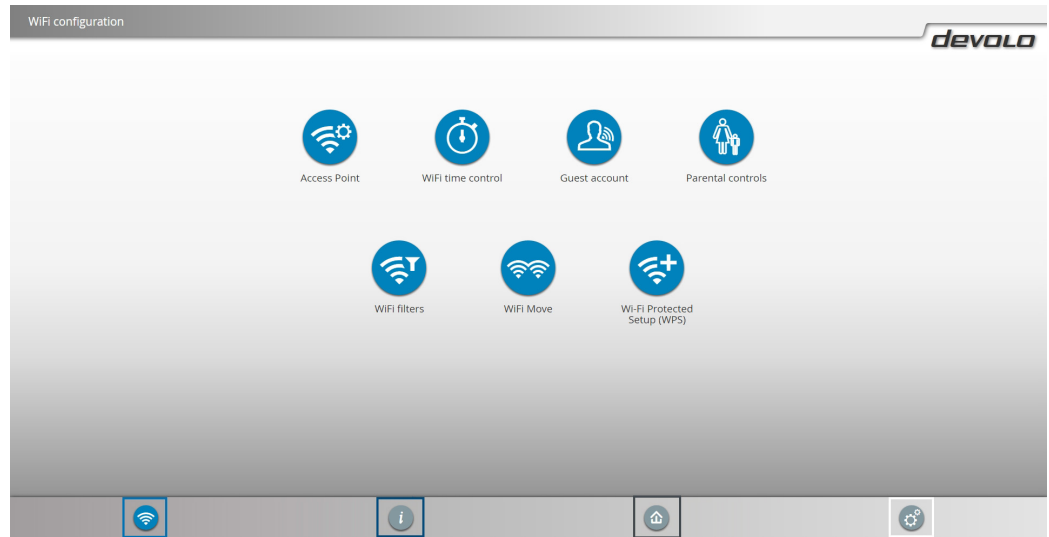


Fig. 7 Interface of the devolo Cockpit software



All of the device's WiFi functions are in the **WiFi configuration** area, where you can configure settings.



In the **Status overview** area, you get general information about all connected dLAN, WiFi and LAN devices.



You can find all of the dLAN functions in the **Device configuration** area.



In addition to the language selection, the **Management** area includes configuration options for the network, device security and management, i.e. resetting, securing and restoring your individual configurations and updating firmware.

Click **OK** to save the settings of the respective area of the configuration interface.

Click **Cancel** to leave the respective area of the configuration interface.

## 4.3 WiFi configuration



In the **WiFi configuration** area, configure settings for the WiFi network and its security:

- Access point
- WLAN time control
- Guest account
- Parental controls
- WLAN filters
- WiFi Move
- WiFi Protected Setup (WPS)

Click or tap the respective icon to go the corresponding area.

### 4.3.1 Access point

#### Wi-Fi On/Off

You can enable or disable the WiFi function of your dLAN 550+ WiFi:

- To **enable** the WiFi function, press the **WiFi button** on the front side **once briefly**.
- To **disable** the device, press the **WiFi button** on the front side for **3 seconds** until the LED goes out.

or

- On the configuration interface under **WiFi configuration** ▾ **Access Point**, use the **WiFi off/on** button.

or

- Enable the WLAN time control. For more information, refer to Chapter **4.3.2 WLAN time control**.



***The WiFi function of the dLAN 550+ WiFi is enabled by default.***

If you want to operate the adapter exclusively as a simple dLAN device via the built-in Ethernet connection, you can completely shut off the WiFi function.

For operation as a WiFi access point, configure the WiFi parameters for your wireless network as follows:

#### Network name

The **network name (SSID)** determines the name of your wireless network. You can see this name when logging onto the WiFi, allowing you to identify the correct WiFi network.

#### Hiding the SSID

If you enable the **Hide SSID** option, your wireless network remains hidden. In this case, potential network

users must know the exact SSID and enter it manually to be able to set up a connection.

- *Some WiFi adapters have difficulty connecting to such hidden wireless networks. If the connection with a hidden name poses problems, first try setting up the connection with a visible network name and then hiding the network name afterwards.*

### Channel

For operation as an access point, a (transmission) channel must be specified. There are 13 channels available. We recommend keeping the default setting **Auto**, since in this setting the dLAN 550+ WiFi selects the channel regularly and independently. If no stations are connected, the device automatically selects a channel every 2 hours.

### Encryption



***You should always encrypt the connections in your WiFi network. Otherwise anyone within range could penetrate into your network.***



***WPA2 is the WiFi encryption set by default for dLAN 550+ WiFi. The default WiFi key is the WiFi key of the dLAN 550+ WiFi. You can find the key on the label on the rear side of the housing.***

The **WPA** and **WPA/WPA2 (WiFi Protected Access)** security standards are available for securing data transmission in your wireless network.

This method allows for individualised keys consisting of **letters and numbers with a length of up to 63 characters**. You can simply enter them via the keyboard.

### Key

To do so, enter a corresponding number of characters into the **Key** field.

Without encryption, not only are all data transmitted from client computers to the dLAN 550+ WiFi in your wireless network without protection, but there is also no password prompt to establish the connection. If no



other security measures are set up, such as a WiFi filter (see Chapter **4.3.5 WLAN filters**), third parties could gain access to your network at any time and, for example, use your Internet connection without permission. Each instance of access is visible to you in the WiFi monitor.

Save all modified settings before leaving this configuration area again by pressing **OK** to confirm them.



***Keep in mind that after saving this setting, you will be disconnected from any existing wireless connection to the dLAN 550+ WiFi. In this case, configure the device via the network cable (Ethernet) or dLAN. When activating the encryption, also make sure that the WiFi settings (network name and key) of the access point always match the settings on the clients, as otherwise you will be (unintentionally) excluding devices from your network.***

### 4.3.2 WLAN time control

#### WiFi time control setting off/on

To be able to use the WLAN time control, enable the time control option.

You can define multiple time periods during which your wireless network is to be enabled for each weekday. Then the time control automatically switches the wireless network on or off.

If you enable the **Automatic disconnection** option, the wireless network is not switched off until the last station has logged off.



***Manually switching the access point on or off (i.e. using a button) always overrides the automatic time control. The configured time control then takes effect automatically during the next defined time period.***

### 4.3.3 Guest account

#### Guest account off/on

If you have friends or acquaintances visiting and you want to provide them with Internet access but without giving away the password for your WiFi, you can set up a separate guest account in addition to the main Internet connection. The guest account can have its own network name, time limit and WiFi password. This way your visitors can surf the Internet without having access to your local network.

To set up a guest account, enable the **Guest account** option.

- *You can also enable or disable the guest account in the **my devolo App** using the **Guest account** button.*

If you would like to restrict the guest account to Internet use, enable the **Only allow Internet use** option as well.

#### Automatic shutoff

If you would like to set a time limit for the guest account, enable the option **Automatically shut off guest account after ...** and enter the desired time limit.



**Note that the guest account depends on the adapter and can only be active as long as the adapter is active.**

#### Network name

Define the name of the guest network in the **Network name** field.

#### Encryption

You should also encrypt the guest account to prevent anyone in signal range from intruding into your network and, for example, sharing your Internet connection. The **WPA/WPA2 (WiFi Protected Access)** security standard is available for this.

This method allows for individualised keys consisting of **letters and numbers with a length of up to 63 characters**. You can simply enter them via the keyboard.

To do so, enter a corresponding number of characters into the **Key** field.

### 4.3.4 Parental controls

#### Child-safety feature off/on

You can regulate WiFi access for specific devices based on time using this function. For instance, to prevent your children from using the Internet excessively, you can define how long they may use the WiFi per day.

Synchronisation with an (Internet) time server is necessary to be able to use the parental controls. In this case, the time server (**Management**  $\diamond$  **Management**  $\diamond$  **Date and time**  $\diamond$  **Retrieve date and time automatically**) for the dLAN 550+ WiFi has to be enabled and an active Internet connection is also required.



*The time server `pool.ntp.org` is enabled by default.*

If you would like to set up a daily time quota (usage quota in hours), enable the option **Turn on parental controls**. Now enter the MAC addresses for the devices for which you would like to set up a time quota. You can enter the MAC addresses manually or select them from the list of currently known devices (see **Status overview**  $\diamond$  **WiFi monitor**). Confirm the entries with **OK**.

#### WiFi devices with time quota

Here you can find a list of all the WiFi devices for which the usage time per day is limited.

Each device is displayed with its MAC address, name, usage time remaining and the specified time quota.

To delete a device from this list, click the **trash** icon.

Click or tap the **gear** icon to go to the settings menu for the time quota. If you would like the time quota to be monitored, enable the option **The time limit will be monitored**.

The **daily** time quota (time window, usage time **from - to a.m./p.m.**) can be specified in hours and minutes. If you want to assign the same time quota, you can automatically apply your entry to all days under **Apply time quota to all days of the week** by clicking the **arrow** icon.

To delete a time quota later, click the corresponding **trash** icon.

A **time quota** can only be used if it matches the **time periods** defined in the **WLAN time control** and if the **dLAN 550+ WiFi is enabled** and there is an Internet connection. (see **4.3.2 WLAN time control**).

The time quotas for the parental controls and the WiFi time control setting are defined per weekday.



*If you set a time quota, it will not be enabled until the next day (mid-night).*



### 4.3.5 WLAN filters

#### WPS off/on

In addition to encryption (see **4.3.1 Access point**), you can secure your wireless network even more by using a WiFi filter to limit access to WiFi devices. Even if the encryption is switched off, the device will not establish a connection.



***The WiFi filter should be used only as an additional option for WiFi encryption. By using it you can limit access to your wireless network, but without encryption it is relatively easy for third parties to eavesdrop on all of your data transmissions.***

To use the WiFi filter, **enable the filter**. Now you can manually enter different network devices to provide access to your dLAN 550+ WiFi using what is known as their MAC address or you can select them from a list of known devices (see **Status overview**  **Wi-Fi monitor**). Create new entries with . Save your entries with **OK**.

#### Permitted WiFi devices




Network devices connected to your dLAN 550+ WiFi are automatically listed; that is, to enable an already connected device for the dLAN 550+ WiFi, simply

select the MAC address of this device and confirm it with the **plus** sign. This then appears under **Permitted WiFi devices**. To remove a permitted device, select its MAC address and confirm it by clicking the **Trash** icon.



***The WiFi filter does not have an effect on devices that connect via the guest access.***

**i** The MAC address designates the hardware interface of each individual network device uniquely (e.g. the WiFi adapter of a computer or the Ethernet port of a printer). It consists of six double-digit hexadecimal numbers, each separated by a colon (e.g. 00:0B:3B:37:9D:C4).

You can easily determine the MAC address of a Windows computer by opening the window with the command prompt under **Start**  **All Programs**  **Accessories**  **Command Prompt**. Enter the command **IPCONFIG /ALL** here. The MAC address is displayed under the designation **Physical address**.



**Keep in mind that you also have to enter the WiFi MAC address of your own computer if you are connected to the dLAN 550+ WiFi not via the Ethernet port, but via WiFi. Otherwise you will block your own access to the device via WiFi by activating the WiFi filter.**

Save all modified settings before leaving this configuration area again by pressing **OK** to confirm them.

### 4.3.6 WiFi Clone and WiFi Move

#### WiFi Clone

WiFi Clone lets you apply the WiFi access data of an existing WiFi access point (such as your WiFi router) at the touch of a button. Start the procedure with the **Start setup** option and then press the WPS button of the device with the WiFi access data (SSID and WiFi password) to be applied.

#### WiFi Move

WiFi Move Technology is a function for synchronising the WiFi settings of all devolo WiFi adapters connected to your network.



**The WiFi function and WiFi Move Technology of the dLAN 550+ WiFi are enabled by default.**

You can enable synchronisation of the WiFi settings either by using the functions in this menu or by pressing the respective encryption button with the home icon on the corresponding adapters. To learn how to synchronise the WiFi settings at the touch of a button, refer to Chapters **2.6.1 Encryption button** and **3.3 Connecting the dLAN 550+ WiFi**.

#### WiFi Move Technology support enabled

Switch on WiFi Move Technology (if necessary) by clicking/tapping under **WLAN configuration** ↻ **WiFi Move**. All **WiFi adapters** are now **continuously connected** to each other and, from now on, share changes to the **WLAN configuration** with each other automatically.

In addition, you can see when the last synchronisation took place and which devices are connected via WiFi Move Technology.

### 4.3.7 WiFi Protected Setup (WPS)

#### WPS encryption off/on

You can enable or disable the WPS encryption of your dLAN 550+ WiFi:

WiFi Protected Setup (WPS) is one of the international encryption standards developed by the WiFi Alliance for easily and quickly setting up a secure wireless network. The encryption keys of the respective WiFi devices are transmitted automatically and continuously to the other WiFi device(s) in the wireless network. The dLAN 550+ WiFi offers two different variants for transmitting these encryption keys:

#### WPS via PBC (Push Button):

- ① Start the encryption process on the dLAN 550+ WiFi
  - either by pressing the **WiFi button** on the **front panel of the device** or
  - by pressing the **Start setup** button on the user interface under **WiFi configuration** ▾ **WiFi Protected Setup (WPS)**.
- ② Then either press the WPS key of the WiFi device you are adding or enable the WPS mechanism in the WiFi settings of the WiFi device. Now the devices exchange their encryption keys and establish a secure WiFi connection. The WiFi LED on the front panel indicates the synchronisation process by flashing.

#### WPS via PIN:

- ① To interconnect WiFi devices in your wireless network securely by means of PIN variants, enter an individualised key in the configuration interface under **WLAN configuration** ▾ **WiFi Protected Setup (WPS)** ▾ **PIN** and start the encryption process by pressing the **Start setup** button.
- ② Open the configuration interface of the WiFi client to be added and transmit the PIN selected on the dLAN 550+ WiFi. Confirm the encryption process as described there. Now the devices exchange their encryption keys and establish a secure WiFi connection. The WiFi LED on the front panel indicates the synchronisation process by flashing.

Use of the **WPS** method implies the use of the **WPA/WPA2** encryption standard. Therefore take note of the following automatic settings:

- If **WLAN configuration** ▾ **Access Point** ▾ **No encryption** is selected in advance, **WPA2** is set automatically. The newly generated password is displayed under **WiFi configuration** ▾ **Access Point** in the **Key** field.
- If **WLAN configuration** ▾ **Access Point** ▾ **WPA/WPA2** is selected in advance, this setting remains with the previously assigned password.

## 4.4 Status overview



In the **Status overview** area, you get general information about all connected dLAN, WiFi and LAN devices.

Information about the dLAN 550+ WiFi is also displayed in this menu on the left next to the status of the connected WiFi, dLAN and LAN devices. On the right in the menu you will find the corresponding link to go directly to the menu.

### WiFi status

Here you can see whether the WiFi function of your dLAN 550+ WiFi is switched on or off, as well as whether encryption is used and which frequency band has been configured.

Clicking or tapping **Access Point** takes you directly to the WiFi settings. More information about WiFi network security can be found in Chapter **4.3.1 Access point**.

Clicking or tapping **Configure guest account** takes you directly to the corresponding menu. More information about configuring the guest account can be found in Chapter **4.3.3 Guest account**.

Click or tap **WiFi monitor** to display all of the known WiFi devices. If there is an Internet connection and a

time server has been found, each WiFi device known since the last system start is displayed along with its name, MAC and IP address, the last login date and, if possible, the speed.

### dLAN status

The colour of the lock icon tells you whether an individualised dLAN password or the default password is set (green = individualised password, red = default password). Click or tap **dLAN devices** to display all of the connected dLAN devices. For more information, refer to Chapter **4.5 Device configuration**.

Clicking or tapping **Configure dLAN** takes you to the **dLAN settings**. For more information, refer to Chapter **4.5.1 dLAN settings**.



**Before the networking procedure, note the security IDs of all dLAN adapters. This unique identifier of each dLAN device is located on the label on the back of the housing. It consists of 4 x 4 letters separated by dashes (e.g. ANJR-KMOR-KSHT-QRUV). Ensure that all dLAN adapters are connected to the mains supply and computers or other network components as appropriate.**

### Ethernet status

The status (red = not connected, green = connected) and connection speed of the network jacks are displayed here.

### Firmware version

The firmware version is displayed here. Clicking or tapping **Firmware update** takes you directly to the corresponding menu. For more information about the firmware update, refer to Chapter **4.6.4 System**.

### Access password

For security you can set a login password for access to the configuration interface. The colour of the lock icon tells you whether an individualised login password or no password at all is set (green = individualised password, red = no password). Clicking or tapping **Set access password** takes you directly to the corresponding menu. More information about creating an access password can be found in Chapter **4.6.5 Management**.

### Network settings

Network settings such as the IP address and subnet mask of the dLAN 550+ WiFi are displayed here. Clicking or tapping **Configure network** takes you directly to the network settings. For more information, refer to Chapter **4.6.3 Network settings**.

## 4.5 Device configuration



You can find everything about your dLAN in the **Device configuration** area. Click or tap the respective icon to go the corresponding area.

### 4.5.1 dLAN settings

In a dLAN network, all connected components must use the same password. The dLAN password can be defined in the **my devolo App** or the **devolo Cockpit** program by using the **encryption button** with the **home icon** or at this location in the configuration interface. You can configure the password for the **entire** network.



***The dLAN default password is Home-PlugAV.***

### 4.5.2 dLAN devices

Each connected dLAN device, regardless of whether it is connected locally or remotely in the network, is displayed with its MAC address, name, type and data rate.

### 4.5.3 Add a dLAN device

You can add additional dLAN devices to your dLAN network:



### Using the encryption button with the home icon

**First** press the encryption button (for about **1 second**) on a device in your existing network and then, **within 2 minutes**, press the button **Start setup** on the new dLAN 550+ WiFi (for about **1 second**).

#### Via security ID

To do so, enter the security ID for the respective dLAN adapter in the **Security ID** field and confirm it with **Start setup**.



*Before the networking procedure, note the security IDs of all dLAN adapters. This unique identifier of each dLAN device is located on the label on the back of the housing. It consists of 4 x 4 letters separated by dashes (e.g. ANJR-KMOR-KSHT-QRUV). Ensure that all dLAN adapters are connected to the mains supply and computers or other network components as appropriate.*

## 4.6 Management



In addition to the language selection, the **Management** area includes configuration options for the network, device security and management, i.e. resetting, securing and restoring your individual configurations and updating firmware.

Click or tap the respective icon to go the corresponding area.

### 4.6.1 Language selection

Select your desired menu language here. Save your entry with **OK**.

### 4.6.2 Device security

Here you can set a login password for access to the configuration interface.

By default, the configuration interface of the dLAN 550+ WiFi is **not** protected by a **password**. However, after installing the dLAN 550+ WiFi, you should create a **custom password** to protect the configuration interface from being accessed by third parties.

- ① To do so, first enter (if present) the current password and then enter the desired new password twice. Now the configuration interface

is protected against unauthorised access with your custom password!

- ② Call up the configuration interface again later; the following window appears first:

- ③ Enter **admin** in the **User name** field and your custom password in the **Password** field.



**The admin user name is set by default and cannot be changed.**

### 4.6.3 Network settings

As a component of your network, the dLAN 550+ WiFi also communicates via the TCP/IP protocol. The IP address required for this can either be entered manually or obtained **automatically** from a **DHCP server**.

The option **Network settings are automatically retrieved from a DHCP server** is enabled by default.



**If a DHCP server is already present in the network for giving out IP addresses, have this option enabled so that the dLAN 550+ WiFi automatically receives an address from it. This is usually the router.**

To assign a static IP address, first disable the option **Network settings are automatically retrieved from a DHCP server** and make your individual entries.

Save your entries with **OK**.

- *If you happen to forget the IP address of your dLAN 550+ WiFi, proceed as described under **4.1 Calling up the built-in configuration interface**.*

### 4.6.4 System


Here you can reset the current configuration to the factory defaults, save it to your computer as a file or restore it from there and update the firmware of the dLAN 550+ WiFi.



**Ensure that the update procedure is not interrupted. To do so, it is best to connect your computer to the dLAN 550+ WiFi via dLAN or LAN rather than WiFi.**

### Automatic firmware update

The firmware of the dLAN 550+ WiFi includes the software for operating the device. If necessary, devolo offers new versions on the Internet as a file download, for example to modify existing functions. If you would like the dLAN 550+ WiFi to perform firmware updates automatically, enable the **Automatic firmware update** option and start the update procedure with **Search for newer firmware and update now**.

- The  icon on the front side of the device flashes red during the update procedure. After a successful update, the dLAN 550+ WiFi restarts automatically.

### Updating firmware

To update the firmware to the latest version manually, start by going to the devolo website, [www.devolo.com](http://www.devolo.com), and downloading the appropriate file for the dLAN 550+ WiFi to your computer.

In the **Management**  **System** area click **File name...** and select the downloaded file.

Then start the update procedure with **Update firmware**. After a successful update, the dLAN 550+ WiFi restarts automatically.

- Using the **Updates** button in **devolo Cockpit**, you can also carry out automatic firmware updates from our website, [www.devolo.com](http://www.devolo.com). This procedure requires an active Internet connection. For more information about **devolo Cockpit**, visit [www.devolo.com/cockpit](http://www.devolo.com/cockpit).

### Saving the device configuration

To save the enabled configuration to your computer as a file, select the corresponding button in the **Management** ⇨ **System** ⇨ **Save device configuration** area. Then enter a storage location and name for the settings file.

### Restoring the device configuration

An existing configuration file can be sent to the dLAN 550+ WiFi in the **Management** ⇨ **System** area and enabled there. Select a suitable file via the **File name...** button and start the operation by clicking the **Restore device configuration** button.

### Resetting the device configuration

The dLAN 550+ WiFi is reset to the original factory defaults in the **Management** ⇨ **System** area with the **Reset device configuration** option.



***Doing so causes you to lose your personal WiFi and dLAN settings. The last-assigned passwords for the dLAN 550+ WiFi are also reset.***

For backup purposes, all active configuration settings can be transmitted to your computer, stored there as a file and reloaded into the dLAN 550+ WiFi. This function can be useful for creating a variety of configurati-

ons that will let you quickly and easily set up the device for use in different network environments.

## 4.6.5 Management

### Date and time

A time server is a server on the Internet whose task consists of providing the exact time. Most time servers are coupled with a radio clock. The option **Retrieve date and time automatically** is activated by default so that the dLAN 550+ WiFi can automatically synchronise the date and time.

Select your **Time zone** and the **Time server**. If you have enabled the option **Adjust to daylight saving time automatically**, the adapter automatically adjusts to daylight saving time.

### LED settings

The LED status display can be disabled by enabling the option **Device LEDs**, such as for avoiding unwanted lighting in a bedroom. The LED status display is activated in the factory default state.



***Error states of the adapter are displayed even though the LED is switched off.***

### License information

You can find the license information about the dLAN 550+ WiFi here.

## 5 Annex

### 5.1 Frequency range and transmitting power

Technical specifications in the 2.4-GHz frequency range

Frequency range	2.4 GHz
IEEE standard	802.11 b 802.11 g 802.11 n
Indoor frequency range	–
Indoor & outdoor frequency range	2399.5 – 2484.5 MHz
Channel bandwidth	20 MHz (802.11 b/g) 20, 40 MHz (802.11 n)
Max. indoor transmission power (EIRP)	100 mW / 20 dBm
Max. transmitting power	100 mW / 20 dBm

### 5.2 Channels and carrier frequencies

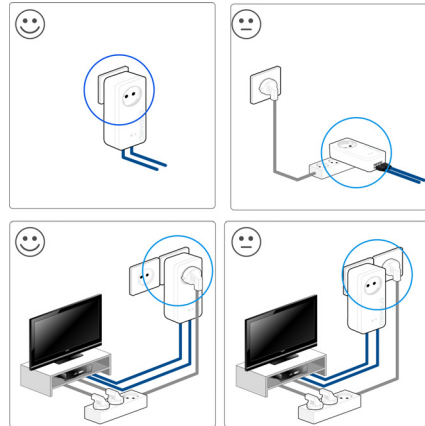
Channels and frequencies in the 2.4-GHz band

Channel	Carrier frequency
1	2412 MHz
2	2417 MHz
3	2422 MHz
4	2427 MHz
5	2432 MHz
6	2437 MHz
7	2442 MHz
8	2447 MHz
9	2452 MHz
10	2457 MHz
11	2462 MHz
12	2467 MHz
13	2472 MHz

### 5.3 Bandwidth optimisation

To significantly improve the transmission capacity of the network, we recommend that you comply with the following connection rules:

- Plug the dLAN 550+ WiFi directly into a wall socket.
- Avoid using a power strip. This may impair the transmission of the dLAN signals.



**Fig. 7 dLAN bandwidth optimisation**

### 5.4 Disposal of old devices

To be used in the countries of the European Union and other European countries with a separate collecting system:



The icon with crossed-out wastebasket on the device means that this product is an electrical or electronic device that falls within the scope of application of the European Community WEEE Directive. These types of devices may no longer be disposed of with household waste. Rather they can be given to a municipal collection point free of charge. Contact your municipal government to find out the address and hours of the nearest collection point.

## 5.5 Warranty conditions

The devolo AG warranty is given to purchasers of devolo products in addition to the warranty conditions provided by law and in accordance with the following conditions:

### 1 Warranty coverage

- a) The warranty covers the equipment delivered and all its parts. Parts will, at devolo's sole discretion, be replaced or repaired free of charge if, despite proven proper handling and adherence to the operating instructions, these parts became defective due to fabrication and/or material defects. Alternatively, devolo reserves the right to replace the defective product with a comparable product with the same specifications and features. Operating manuals and possibly supplied software are excluded from the warranty.
- b) Material and service charges shall be covered by devolo, but not shipping and handling costs involved in transport from the buyer to the service station and/or to devolo.
- c) Replaced parts become property of devolo.
- d) devolo is authorized to carry out technical changes (e.g. firmware updates) beyond repair and replacement of defective parts in order to bring the equipment up to the current technical state. This does not result in any additional charge for the customer. A legal claim to this service does not exist.

### 2 Warranty period

The warranty period for this devolo product is three years. This period begins at the day of delivery from the devolo dealer. Warranty services carried out by devolo do not result in an extension of the warranty period nor do they initiate a new warranty period. The warranty period for installed replacement parts ends with the warranty period of the device as a whole.

### 3 Warranty procedure

- a) If defects appear during the warranty period, the warranty claims must be made immediately, at the latest within a period of 7 days.
- b) In the case of any externally visible damage arising from transport (e.g. damage to the housing), the person carrying out the transportation and the sender should be informed immediately. On discovery of damage which is not externally visible, the transport company and the sender are to be immediately informed in writing, at the latest within 3 days of delivery.
- c) Transport to and from the location where the warranty claim is accepted and/or the repaired device is exchanged, is at the purchaser's own risk and cost.
- d) Warranty claims are only valid if a copy of the original purchase receipt is returned with the device. devolo reserves the right to require the submission of the original purchase receipt.

### 4 Suspension of the warranty

All warranty claims will be deemed invalid

- a) if the label with the serial number has been removed from the device,
- b) if the device is damaged or destroyed as a result of acts of nature or by environmental influences (moisture, electric shock, dust, etc.),
- c) if the device was stored or operated under conditions not in compliance with the technical specifications,
- d) if the damage occurred due to incorrect handling, especially to non-observance of the system description and the operating instructions,
- e) if the device was opened, repaired or modified by persons not contracted by devolo,
- f) if the device shows any kind of mechanical damage, or
- g) if the warranty claim has not been reported in accordance with 3a) or 3b).



## 5 Operating mistakes

If it becomes apparent that the reported malfunction of the device has been caused by unsuitable hardware, software, installation or operation, devolo reserves the right to charge the purchaser for the resulting testing costs.

## 6 Additional regulations

The above conditions define the complete scope of devolo's legal liability.

- a) The warranty gives no entitlement to additional claims, such as any refund in full or in part. Compensation claims, regardless of the legal basis, are excluded. This does not apply if e.g. injury to persons or damage to private property are specifically covered by the product liability law, or in cases of intentional act or culpable negligence.
- b) Claims for compensation of lost profits, indirect or consequential detriments, are excluded.
- c) devolo is not liable for lost data or retrieval of lost data in cases of slight and ordinary negligence.
- d) In the case that the intentional or culpable negligence of devolo employees has caused a loss of data, devolo will be liable for those costs typical to the recovery of data where periodic security data back-ups have been made.
- e) The warranty is valid only for the first purchaser and is not transferable.
- f) The court of jurisdiction is located in Aachen, Germany in the case that the purchaser is a merchant. If the purchaser does not have a court of jurisdiction in the Federal Republic of Germany or if he moves his domicile out of Germany after conclusion of the contract, devolo's court of jurisdiction applies. This is also applicable if the purchaser's domicile is not known at the time of institution of proceedings.
- g) The law of the Federal Republic of Germany is applicable. The UN commercial law does not apply to dealings between devolo and the purchaser.

# Index

## C

CE 6

## D

Default WiFi key 13, 31

DHCP server 41

dLAN 9

dLAN password 39

## I

IP address 41

## L

LAN (network connection) 14

LED status display 11, 44

Linux 24

## M

Mac (OS X) 24

MAC address 35

## P

Package contents 17

## R

Reset 15

## S

Safety notes 6

Security ID 38, 40

System requirements 17

## T

Time server 44

## W

WiFi 9

WiFi antenna 15

WiFi Clone 36

WiFi key 13, 31

WiFi Move Technology 36

Windows 24

WLAN filters 35

WLAN time control 32

WPA 33

WPA2 31, 33