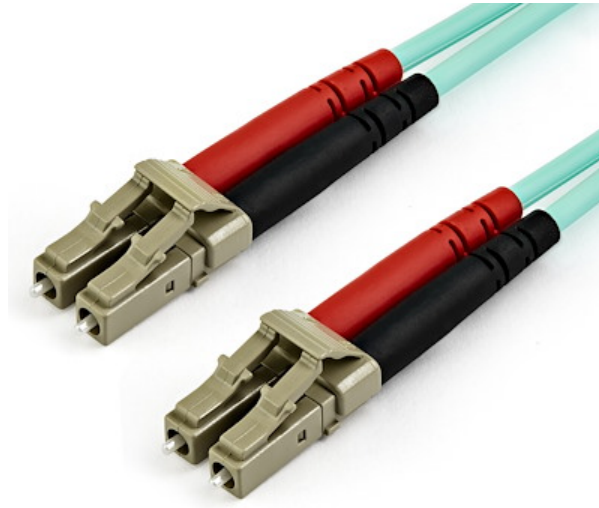


## 7 m OM3 LC to LC Multimode Duplex Fiber Optic Patch Cable

**Product ID:** A50FBLCLC7



This OM3 LC to LC Multimode Duplex Fiber Optic Patch cable features 50/125 micron fiber and supports high-bandwidth data transmission over a 10 Gigabit Ethernet connection.

With laser-optimized multimode fiber (LOMMF), the patch cable is ideal for connecting 850 nm Vertical Cavity Surface Emitting Laser (VCSEL) and LED sources. The high-speed connectivity on the aqua fiber-optic cable provides a high-bandwidth solution for your data centers or high-density applications.

Each OM3 fiber cable is individually tested and certified to be within acceptable optical insertion loss limits for guaranteed compatibility and 100% reliability.

Housed in a LSZH (Low-Smoke, Zero-Halogen) flame retardant jacket, this fiber-optic cable ensures minimal smoke, toxicity and corrosion when exposed to high sources of heat, or in the event of a fire. It's the best choice for a wide range of environments, including industrial settings, central offices and schools, as well as residential settings where building codes are a consideration.

A50FBLCLC7 is backed by a StarTech.com lifetime warranty and free lifetime technical support.

### Certifications, Reports and Compatibility



### Applications

- Use in 10 Gigabit high-speed network environments
- High-speed connectivity for high-density applications

## Features

- Reliable connectivity for your 10Gb Ethernet applications
- Provides high bandwidth with laser-optimized multimode fiber (LOMMF)
- Easily connect to your VCSEL and LED sources
- Certified to ensure attenuation loss meets industry standards
- Built with a Low-Smoke, Zero-Halogen flame retardant jacket for a safe connection

---

### Hardware

Warranty	Lifetime
Fire Rating	LSZH Rated (Low Smoke Zero Halogen)
Fiber Size	50/125

---

### Performance

Maximum Data Transfer Rate	100Gbps
Cable Rating	1Gbps / 10Gbps / 40Gbps / 100Gbps
Fiber Classification	OM3
Type	Multi Mode
Wavelength	850nm

---

### Connector(s)

Connector A	1 - Fiber Optic LC Duplex
Connector B	1 - Fiber Optic LC Duplex

---

### Environmental

Operating Temperature	-20C to 60C (-4F to 140F)
Storage Temperature	-20C to 60C (-4F to 140F)
Humidity	0~90% RH

---

### Physical Characteristics

Color	Aqua
-------	------



Cable Length	23.0 ft [7 m]
Product Length	23.0 ft [7.0 m]
Product Width	0.5 in [13.0 mm]
Product Height	0.4 in [10.0 mm]
Weight of Product	3.4 oz [96.0 g]

---

**Packaging Information**

Package Length	7.9 in [20.0 cm]
Package Width	8.5 in [21.5 cm]
Package Height	0.8 in [20.0 mm]
Shipping (Package) Weight	3.7 oz [106.0 g]

---

**What's in the Box**

Included in Package	1 - 7 m Fiber Patch Cable
---------------------	---------------------------

---

*\*Product appearance and specifications are subject to change without notice.*

