



CorelCAD™ 2021

powered by ARES®

The professional, affordable, and simplified CAD software

Achieve outstanding results with CorelCAD™ 2021, an affordable collection of powerful 2D drafting and 3D design tools, purpose-built for architecture, engineering, construction (AEC) and manufacturing professionals who demand precision. Turn visualization into realization on Windows and macOS, thanks to native .DWG file support for efficient collaboration and .STL support for productive 3D publishing.

Who's it for?

Architecture, Construction and Engineering (AEC) professionals

- Produce 2D designs for drafting and construction plans (buildings, infrastructure, plants) floor plans, elevations, and construction details
- Easily create 3D models based on 2D drawings for presentation purposes

Occasional 2D CAD users in medium to large manufacturing businesses

- Create 2D designs that complement the strategic 3D application solution, and schematics
- Define parts details in top and side views or elevations



Light manufacturing design engineers in small to medium businesses

- Craft 2D designs for drafting and production preparation (detailed production drawings)
- Define and view assemblies and parts details in top and side angles
- Produce and view schematics
- Quickly create prototypes and initial 3D designs from 2D design sources

Technical design enthusiasts in DIY businesses

- Produce 2D drafts and graphics and 3D designs for 3D printing

Why choose CorelCAD 2021?

Affordable and efficient CAD software

Expand your visual communication repertoire with CorelCAD's powerful drafting and design tools, delivering serious productivity at an affordable price. With time-saving features and an easy to navigate user interface, designers are able to accelerate their workflow and deliver impressive, visually-rich CAD projects.



Precise 2D drafting tools

Harness your CAD power with an expansive collection of professional drafting tools that deliver the control and precision professional engineers and designers require. Flexibility meets ingenuity with this optimal toolkit for creating, editing, and annotating technical designs across any industry.

Data Extraction - Select Properties (Step 4 of 6)

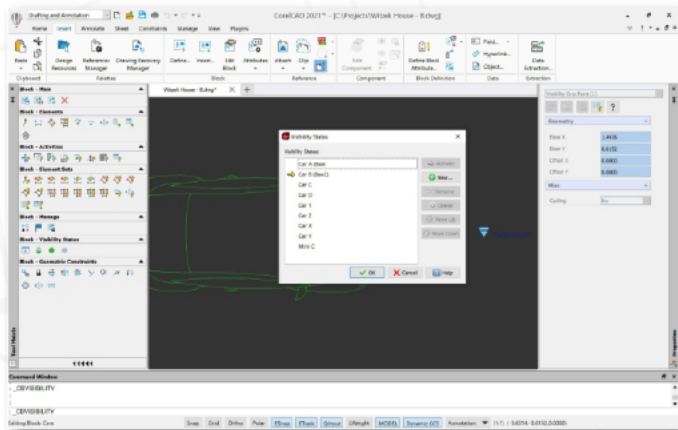
The following properties were found based on the selected entities. Select the properties you want to extract.

Property	Display Name	Category	Category Filter
<input type="checkbox"/> DRAFT NUMBER	DRAFT NUMBER	BlockAttributes	<input type="checkbox"/> BlockAttributes
<input type="checkbox"/> FURNITURE SIZE	FURNITURE SIZE	BlockAttributes	<input type="checkbox"/> Drawing
<input type="checkbox"/> MODEL	MODEL	BlockAttributes	<input type="checkbox"/> General
<input type="checkbox"/> Name	Name	Misc	<input type="checkbox"/> Geometry
<input type="checkbox"/> PRICE	PRICE	BlockAttributes	<input type="checkbox"/> Misc

PROJECT NUMBER	Count	Name	FURNITURE SIZE	Layer	MODEL	PRICE	PROJ.
12	1	BED 36x71	36" x 72"	0	Mod. Bed019H-05	\$ 159	
24	1	BED 36x71	36" x 72"	Furniture 02	Mod. Bed019H-05	\$ 159	
80	1	BED 36x71	36" x 72"	Furniture - Bed	Mod. Bed019H-05	\$ 159	
8	1	Door 90	30" x 78"	Door	Mod. Door090-06	\$ 85	
7	1	Door 90	30" x 80"	Door	Mod. Door090-06	\$ 99	
8	1	Door 90	30" x 80"	Door	Mod. Door090-06	\$ 99	
26	1	Door 90	30" x 80"	Door	Mod. Door090-06	\$ 99	
8	1	Door 90	30" x 80"	Door	Mod. Door090-06	\$ 99	
8	1	Shower	104" x 72"	Furniture 01	Mod. Shower0200	\$ 260	
8	1	Sink MountVideo		Furniture 01	Mod. MountVideoSink	\$ 125	
2	1	Tile		Wall - Hard			
8	1	WC MountVideo		Furniture 01	Mod. MountVideoWC	\$ 239	
54	1	Window 78x36	72" x 36"	Windows	Mod. Win020	\$ 190	
24	1	Window 78x36	36" x 36"	Windows	Mod. Win018x36	\$ 240	

Specialized 3D design tools

Transition your drawings from 2D drafting into advanced 3D designs with exactness and ease. With an array of expert and intuitive 3D modeling and editing tools, designers are well equipped to move from project sketches to 3D output and printing in no time.

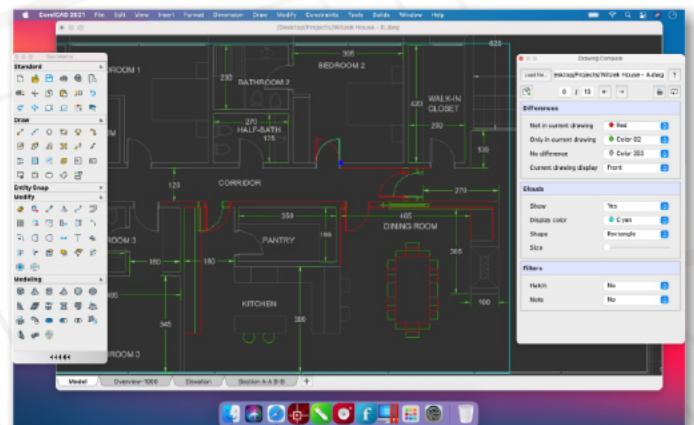


Industry-standard compatibility and optimization

Streamline project sharing with internal and external stakeholders alike. Take advantage of innovative customization and automation support options to align with any working environment and collaborate effortlessly thanks to full AutoCAD .DWG file format compatibility.

High-performance CAD engine and graphics support

Incorporate key graphics into your workflow with award-winning CorelDRAW® technology* and increase your CAD capabilities with additional CorelCAD plugins. Experience advanced CAD performance with the strength of a sophisticated CAD engine powered by ARES® and bring efficiency to every CAD project.



What's New?

Drawing Compare Palette

Compare two files with highlighted colors to track changes, show multiple options within a project, and define before and after points within your workflow.

Enhanced Pattern Command

Duplicate objects and patterns along a path in the same perspective with new associativity in the Pattern command, now you can replicate objects and patterns along a linear or circular path.

Convert Dynamic Blocks to Custom Blocks

Save changes to dynamic block definitions by converting them to custom blocks, providing more control and editing abilities in your files.

Redesigned Print Dialog*

Enjoy a streamlined printing process bringing multiple options to one location, providing additional display options and more control.

Windows System Requirements

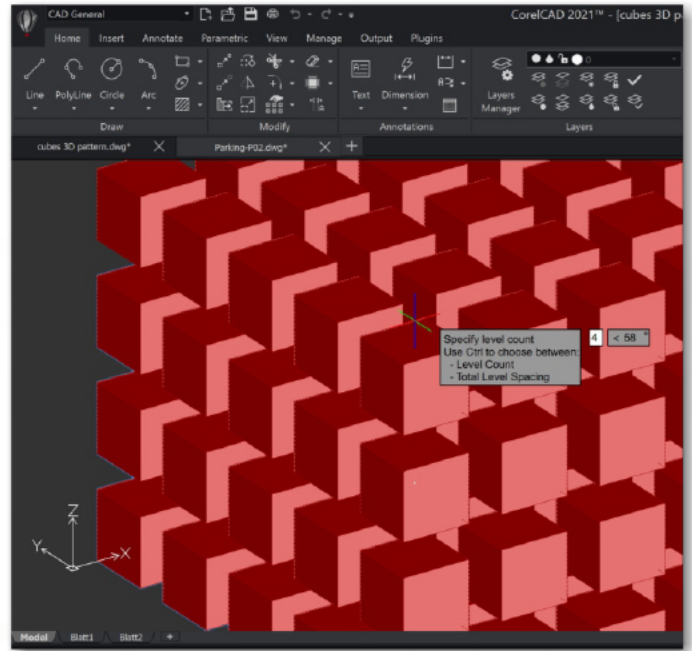
- Microsoft Windows 10** or 8.1, in 32-bit or 64-bit, all with latest Updates
- Intel Core 2 Duo, or AMD Athlon x2 Dual-Core processor
- 4 GB RAM (8 GB or more recommended)
- 1.5 GB available hard disk space
- 3D Graphics accelerator card with OpenGL version 1.4 (OpenGL version 3.2 or better recommended)
- 1280 x 768 screen resolution (1920 x 1080 (Full HD) recommended)
- Mouse or tablet
- DVD drive optional (for box installation)
- Internet connection for product activation and access to the plug-in store

*Ribbon UI, Drawing tabs, import and export of CorelDRAW (.CDR) and Corel DESIGNER (.DES) file formats, enhanced PDF options (bitmap resolution), redesigned print dialog, support for 3Dconnexion input devices and Microsoft VSTA are only available in CorelCAD for Windows.

**CorelCAD 2021 supports Windows 10, version 2004, 20H2 and later versions which may be released during the lifecycle of CorelCAD 2021.



Corel, the Corel balloon logo, CorelCAD, and CorelDRAW are trademarks of Corel Corporation. ARES is a trademark of Graebert GmbH. Mac and macOS are trademarks of Apple Inc. All other company, product and service names, logos, brands and any registered or unregistered trademarks mentioned are used for identification purposes only and remain the exclusive property of their respective owners.



Enhanced PDF Output*

Adjust the file size and image quality to fit your needs, with the enhanced ability to set the quality of raster and vector images when exporting your work to PDFs.

macOS System Requirements

- macOS Big Sur (11), macOS Catalina (10.15), or macOS Mojave (10.14)
- Multicore Intel or Apple M1 processor
- 4 GB of RAM (8 GB or more recommended)
- 1.5 GB available hard disk space
- 3D Graphics accelerator card with OpenGL version 1.4 (OpenGL version 3.2 or better recommended)
- 1280 x 768 display (1920 x 1080 (Full HD) recommended)
- Mouse or tablet
- DVD drive optional (for box installation)
- Internet connection for product activation and access to the plug-in store

For more information on our license options,
or to contact our Sales team visit

www.coreldraw.com/business