

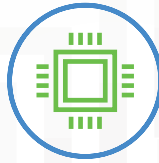
ideacentre 5

A POWERFUL NEW COMPUTING ENGINE FOR THE HOME.

The essential power PC for the modern household, the performance-driven Lenovo™ IdeaCentre™ 5 is powered by the latest AMD Ryzen™ 5000 Series desktop processors, the gaming-class AMD Radeon™ graphics card and high-speed DDR4 memory. Its versatile build delivers smooth and humming power and performance, while its contemporary streamlined design fits into any home.



WHY YOU SHOULD BUY LENOVO IDEACENTRE 5



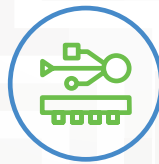
The gold standard in home performance

The IdeaCentre 5 is engineered to set the gold standard for the home PC. With the latest AMD Ryzen™ 5000 Series desktop processors, AMD Radeon™ discrete graphics and up to 32 GB DDR4 memory, the IdeaCentre is your family's designated household powerhouse, capable of handling the most graphics-heavy multi-tasking duties while supporting the latest AAA games.



Stays calm and cool under pressure

The IdeaCentre 5 keeps your system and environment cool and quiet, even under heavy graphics pressure with an ultra-efficient dual fan and vent system that features improved heat sinks and a higher CPU and GPU thermal ceiling. Q-Control lets users calibrate fan speeds from Quiet to Balance to Performance, to customize your thermal settings.



Connects to everything

Plug in any device on the market. The IdeaCentre 5 comes with two USB 3.1 ports at the front of the tower, along with four USB 2.0 ports, two USB 3.2 Type-A ports, one USB 3.2 Type-C™ ports, a 3-in-1 card reader and an HDMI™ port. Prevent dust build-up on the optical disc driver with the special slider door design.



A contemporary centerpiece for the home

With a streamlined profile and classic mineral grey tones, the IdeaCentre 5's chassis is engineered to pair well with any room in the home. Beneath the sleek, minimal exterior also hides a powerful build that delivers both maximum performance and superior speed.

THE FASTEST IN THE GAME*

Whether you are playing the latest games, designing the next skyscraper, or crunching data, you need a powerful processor. AMD Ryzen™ 5000 Series desktop processors are the fastest in the game, setting the bar for gamers, artists and multitaskers.*

* Testing by AMD performance labs as of 9/2/2020 based on the average FPS of 40 PC games at 1920 x 1080 with the high image quality preset using an AMD Ryzen™ 9 5900X processor vs. Core™ i9-10900K. For Ryzen™ 5000G series processors only. Results are based on engineering projections, and are not representative of final performance, which is subject to change when products are available in-market. Results may vary. R5K-002.



WWW.LENOVO.COM

Lenovo™

ideacentre 5

SPECIFICATIONS

Lenovo IdeaCentre 5 (14L, 6)*

PERFORMANCE

Processor

AMD Ryzen™ 7 5700G Processor with Radeon™ Graphics

AMD Ryzen™ 5 5600G Processor with Radeon™ Graphics

AMD Ryzen™ 3 5300G Processor with Radeon™ Graphics

Operating System

Windows 10 Home

Graphics

Integrated: AMD Radeon™ Graphics

Discrete: AMD Radeon™ RX 550X Graphics

Memory

DDR4: 4 GB / 8 GB / 12 GB / 16 GB / 24 GB / 32 GB

Storage

SSD: 256 GB / 512 GB

HDD: 1 TB / 2 TB

Power Supply

260W PSU

DESIGN

Volume

14 L

Dimensions (W x D x H)

(mm) : 284.6 x 145 x 340

(inches) : 11.2" x 5.7" x 13.38"

Net Weight

Starting at 5.4 kg (11.9 lbs)

Color

Mineral Grey

CONNECTIVITY

WLAN & Bluetooth® Combo

Up to 2x2 WiFi 6 (802.11 ax/ac)

Bluetooth® 5.0 Combo with WiFi Card

Input/Output (I/O) Ports

Front

1 x USB 3.2¹ Gen 1 Type-C™

1 x USB 3.2¹ Gen 2 Type-A

1 x USB 3.2¹ Gen 1 Type-A

1 x 3-in-1 Card Reader²

1 x Combo Microphone/Audio

1 x Optical Disk Driver²

Rear

4 x USB 2.0 Type-A

1 x RJ45

1 x HDMI™

Audio Jack

PRELOADED SOFTWARE

- Lenovo Vantage
- McAfee® LiveSafe™
- Microsoft Office 365³

¹ The actual transfer speed of the USB 3.1 Gen 1 will vary and, depending on many factors, such as the processing capability of host and peripheral devices, file attributes and other factors related to system configuration and your operating environments, will be slower than a speed of 20 Gbit/s.

² Optional.

³ Not available in China, India, nor Japan.



OPTIONS & ACCESSORIES



Lenovo 510 Wireless Combo Keyboard & Mouse

LENOVO SERVICES

Warranty Upgrades - On-site /

In-Home Service

Maximizes PC uptime and productivity by providing convenient, fast repair services in your own home.

Accidental Damage Protection

Avoid the hassles of unexpected repair costs. Provides coverage for non-warranted damage incurred under normal operating conditions, such as minor spills, drops or damage to the integrated screen.

Warranty Extensions

(1-to-3 Years Total Duration)

This fixed-term, fixed-cost service helps accurately budget for PC expenses, protect your valuable investment and potentially lower the cost of ownership over time.

* Example of Lenovo catalogue naming convention

Ideacentre
Sub-Brand

5
Position

(14L,
Screen size
or volume (liter)

6)
Generation



WWW.LENOVO.COM



Lenovo reserves the right to alter product offerings and specifications at any time, without notice. Lenovo makes every effort to ensure accuracy of all information but is not liable or responsible for any editorial, photographic or typographic errors. All images are for illustration purposes only. For full Lenovo product, service and warranty specifications visit www.lenovo.com. Lenovo makes no representations or warranties regarding third party products or services. **Trademarks:** The following are trademarks or registered trademarks of Lenovo: Lenovo, the Lenovo logo, ideapad, ideacentre, yoga and yoga home. Microsoft, Windows and Vista are registered trademarks of Microsoft Corporation. Battery life (and recharge times) will vary based on many factors including system settings and usage. Visit www.lenovo.com/lenovo/us/en/safecomp/ periodically for the latest information on safe and effective computing.

©2021 Lenovo. All rights reserved.

©2021 Advanced Micro Devices, Inc. All rights reserved. AMD, the AMD Arrow logo, AMD Ryzen, Radeon, and combinations thereof are trademarks of Advanced Micro Devices, Inc.

Lenovo™