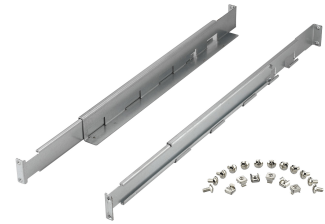


Salicru Rack Rails for SLC Advance RT2 / SLC Twin RT2, 550 x 1100 mm

Brand : Salicru

Product code: 6980P000037

Product name : Rack Rails for SLC Advance RT2 / SLC Twin RT2, 550 x 1100 mm

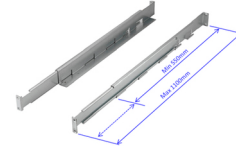


Rack Rails for SLC Advance RT2 / SLC Twin RT2, 550 x 1100 mm

Salicru Rack Rails for SLC Advance RT2 / SLC Twin RT2, 550 x 1100 mm:

Telescopic slides for SLC TWIN RT2 / SPS ADVANCE RT2 models (UPSs or battery packs), to be adapted to cabinets with depths between 550mm and 1100mm. The maximum weight per equipment of this slides is 60Kg. This product includes two slides, because each UPS needs two units at least.

Salicru Rack Rails for SLC Advance RT2 / SLC Twin RT2, 550 x 1100 mm. Type: Rack rail kit, Product colour: Aluminium, Maximum weight capacity: 60 kg. Depth: 550 mm, Depth (max): 110 cm. Quantity per pack: 2 pc(s)



Features		Weight & dimensions	
Type *	Rack rail kit	Depth (max)	110 cm
Product colour *	Aluminium	Packaging data	
Maximum weight capacity	60 kg	Quantity per pack	2 pc(s)
Compatibility	SLC Advance RT2 / SLC Twin RT2	Packaging content	
Weight & dimensions		Screws included	✓
Depth	550 mm	Logistics data	
		Harmonized System (HS) code	85389099



8436035924417

Disclaimer. The information published here (the "Information") is based on sources that can be considered reliable, typically the manufacturer, but this Information is provided "AS IS" and without guarantee of correctness or completeness. The Information is only indicative and can be changed at any time without notification. No rights can be based on the Information. Suppliers or aggregators of this Information do not accept any liability with regard to the content of (web)pages and other documents, including its Information. The publisher of the Information can not be held liable for the content of 3rd party websites that are linking this Information or are linked to from this Information. You as the User of the Information are solely responsible for the choice and usage of this Information. You are not entitled to transfer, copy or otherwise multiply or distribute the Information. You are obliged to follow the directions of the copyright owner(s) with regard to the use of the Information. Exclusively Dutch law is applicable. With regard to price and stock data on the site, the publisher followed a number of starting points, which are not necessarily relevant for your private or business circumstances. Therefore, the price and stock data are only indicative and are subject to changes. You are personally responsible for the way you use and apply this information. As a user of the Information or sites or documents in which this Information is included, you will adhere to standard fair use including avoidance of spamming, ripping, intellectual-property violations, privacy violations, and any other illegal activity.

Publication date: 11-MAY-2023. Prints or copies of Information are only valid on the printed Publication date