



TP-Link AV1000 Gigabit Powerline ac Wi-Fi Kit

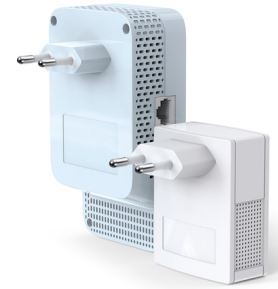
Brand : TP-Link

Product code: TL-WPA7517 KIT

Product name : AV1000 Gigabit Powerline ac Wi-Fi Kit

- Homeplug AV2 standard compliant - Provides users with stable, high-speed data transfer rates of up to 1000 Mbps on a line length of up to 300 meters
- Dual band 802.11ac Wi-Fi - AC750 dual band Wi-Fi (433Mbps on 5GHz & 300Mbps on 2.4GHz) allows streaming, gaming, emailing, browsing and posting on your wireless devices, throughout your home
- Wi-Fi Auto-Sync - Simply copy your router's Wi-Fi settings and apply any changes across the secure powerline network with Wi-Fi Clone and Wi-Fi Move
- Gigabit Ethernet Ports - Provide reliable high-speed wired connections for game consoles, smart TVs, and NAS
- Plug, Pair and Play - Quickly set up a secured Powerline network

TL-WPA7517 + TL-PA7017, Gigabit Ethernet, Up to 300 m, OFDM (PLC)



Performance		Design	
Maximum data transfer rate *	1000 Mbit/s	Certification	CE, RoHS
Ethernet LAN *	✓	System requirements	
Ethernet LAN interface type	Gigabit Ethernet	Windows operating systems supported	Windows 10, Windows 7, Windows 8, Windows 8.1
Ethernet LAN data rates	10,100,1000 Mbit/s	Linux operating systems supported	✓
Ethernet LAN (RJ-45) ports	2	Mac compatibility	✓
Wi-Fi *	✓	Mac operating systems supported	✓
Top Wi-Fi standard	Wi-Fi 5 (802.11ac)	Operational conditions	
Wi-Fi standards	802.11a, 802.11b, 802.11g, Wi-Fi 4 (802.11n), Wi-Fi 5 (802.11ac)	Operating temperature (T-T)	0 - 40 °C
Wi-Fi band	Dual-band (2.4 GHz / 5 GHz)	Operating relative humidity (H-H)	10 - 90%
WLAN data transfer rates supported	300,433 Mbit/s	Weight & dimensions	
Networking standards *	IEEE 1901, IEEE 802.11a, IEEE 802.11ac, IEEE 802.11b, IEEE 802.11g, IEEE 802.11n, IEEE 802.3, IEEE 802.3u	Width	69.5 mm
Power plug *	Type E	Depth	35 mm
Built-in power socket *	✗	Height	124.1 mm
PowerLine standard	HomePlug AV2	Package width	230 mm
Modulation	OFDM	Package depth	190 mm
Security algorithms	WEP, WPA-PSK, WPA2-PSK	Package height	100 mm
Maximum operating distance	300 m	Package weight	560 g
Encryption button	✓	Packaging content	
Plug and Play	✓	Quick installation guide	✓
Power		Cables included	LAN (RJ-45)
Power consumption (typical)	6.5 W	Logistics data	
Design		Harmonized System (HS) code	85171800
Antenna type	Internal		
LED indicators	LAN, PLC, Power, Wi-Fi		
Product colour *	White		



6935364072230



6935364052584

Disclaimer. The information published here (the "Information") is based on sources that can be considered reliable, typically the manufacturer, but this Information is provided "AS IS" and without guarantee of correctness or completeness. The Information is only indicative and can be changed at any time without notification. No rights can be based on the Information. Suppliers or aggregators of this Information do not accept any liability with regard to the content of (web)pages and other documents, including its Information. The publisher of the Information can not be held liable for the content of 3rd party websites that are linking this Information or are linked to from this Information. You as the User of the Information are solely responsible for the choice and usage of this Information. You are not entitled to transfer, copy or otherwise multiply or distribute the Information. You are obliged to follow the directions of the copyright owner(s) with regard to the use of the Information. Exclusively Dutch law is applicable. With regard to price and stock data on the site, the publisher followed a number of starting points, which are not necessarily relevant for your private or business circumstances. Therefore, the price and stock data are only indicative and are subject to changes. You are personally responsible for the way you use and apply this information. As a user of the Information or sites or documents in which this Information is included, you will adhere to standard fair use including avoidance of spamming, ripping, intellectual-property violations, privacy violations, and any other illegal activity.